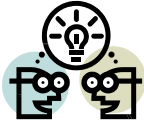


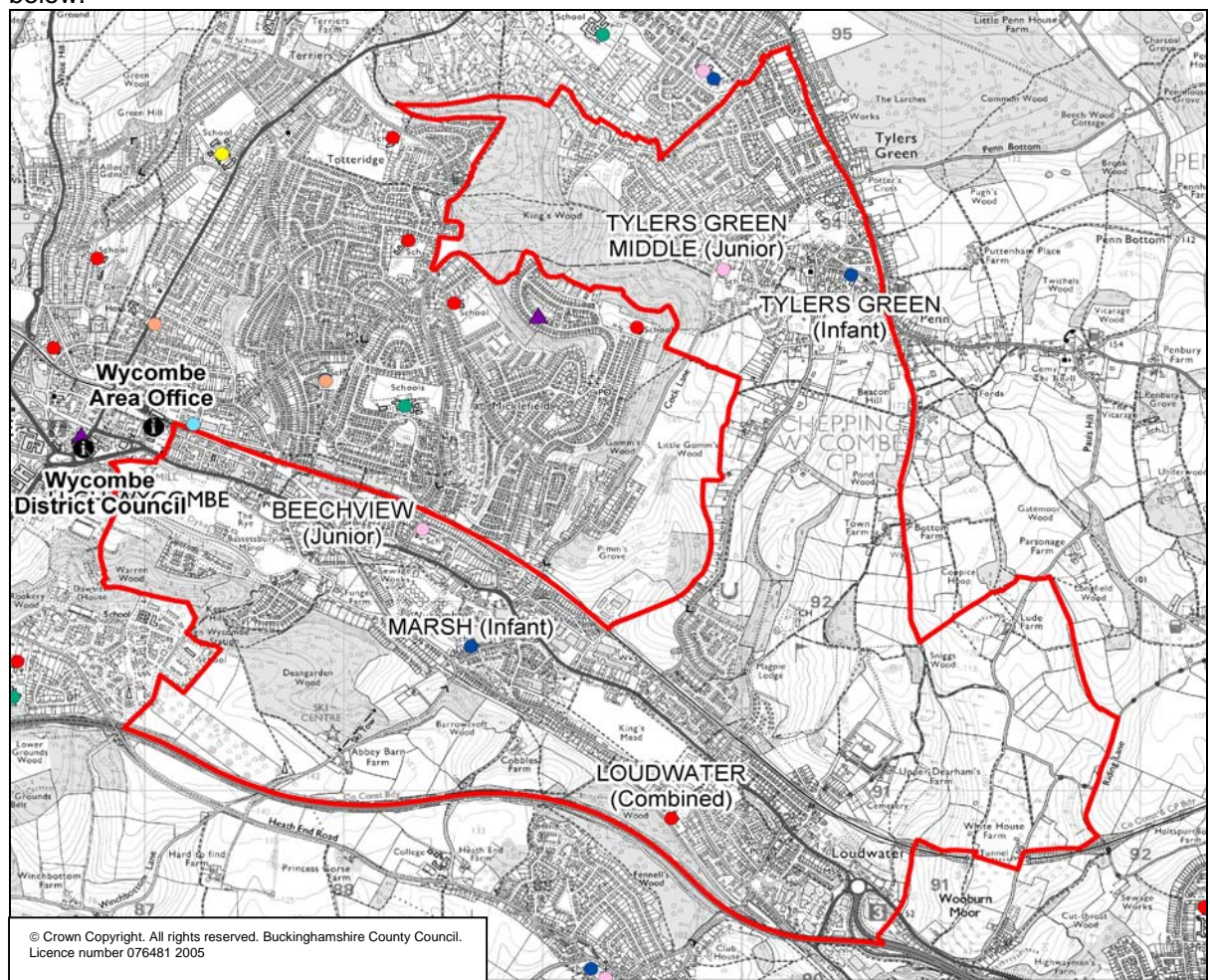
Electoral Division Profile Ryemead, Tylers Green & Loudwater



Overview

Ryemead, Tylers Green & Loudwater is located in the south east of Wycombe District, to the east of High Wycombe. The Division is extremely diverse containing the densely populated urban areas of Loudwater in the south and Tylers Green in the north, with sparsely populated rural areas in the middle and south western areas of the Division.

The location of schools, libraries, area offices and district council offices are shown on the map below.



Legend

● Combined (primary)	● Nursery	i Area offices and district councils
● Grammar (secondary)	● Pupil referral unit	▲ Library
● Infant (primary)	● Special school	
● Junior (primary)	● Upper (secondary)	

Not all these properties will be featured in your Division

Wards within Ryemead, Tylers Green & Loudwater

- Ryemead ward
- Tylers Green & Loudwater ward

Electoral Division Profile Ryemead, Tylers Green & Loudwater

Local Committee

Membership of Local Committees includes Councillors from County, District, Town and Parish Councils, plus partners from the voluntary, public and private sectors such as Thames Valley Police or the National Trust. All members are expected to attend their Local Committee. The Local Committee for Ryemead, Tylers Green & Loudwater is Wycombe Local Committee.

Chairman:	Telephone:
	Email:
Vice Chairman:	Telephone:
	Email:

Please insert details of appointments when announced

Local Coordinator

Each committee is supported by a local coordinator who facilitates and promotes communication between elected members in the area and officers in the County Council.

Local Coordinator:	Telephone: 01494 475378
Ian Reed	Email: ireed@buckscc.gov.uk

Local Area Manager

Within the Planning and Transportation service there are two area managers. An area manager acts as the local Head of Transportation for the area and corporate link with the Strategic Director of Planning and Transportation.

Local Area Manager:	Telephone: 01494 475366
Mike Knight	Email: maknight@buckscc.gov.uk

Relationship Manager

The role of the local relationship manager is to represent the County Council to the District at a managerial and operational level. Each is the strategic link with the District in relation to policy development and acts as a catalyst for local problem solving.

Relationship Manager	Telephone: 01296 383106
Neil Gibson	Email: negibson@buckscc.gov.uk

There is a range of County Council establishments in each Division, a list of which will be provided in the near future by the Democratic Services Team. As part of their community leadership role, members are expected to visit all of these twice a year.

Local Strategic Partnerships (LSP)

Community planning in Buckinghamshire operates through a network of partnerships working at County, District, Parish and neighbourhood levels. The Bucks Strategic Partnership provides the countywide strategic element in this network and gives further strength to partnership work and community planning at a local level.

A local strategic partnership, Wycombe partnership, was established some time ago; its current Chairman is Brian Paine. Further information can be found on the Wycombe District website: www.wycombe.gov.uk/council/default.asp?pid=4481&step=4

Crime and Disorder Reduction Partnership (CDRP)

Local Crime & Disorder Reduction Partnerships (CDRPs) are required by statute to generate and deliver strategies to reduce crime and the fear of crime, and to tackle the misuse of drugs. The membership of this partnership brings together the police, councils and other statutory and non-statutory agencies. It aims to simplify local working relationships, give greater recognition to common interests, and provide the right framework to enable a more effective delivery of the crime reduction and drugs agendas. Partnership working is key to the success of community safety.

www.wycombe.gov.uk/services/default.asp?id=543&step=2

Useful contacts	Details
Buckinghamshire County Council	County Hall Walton Street Aylesbury Buckinghamshire HP20 1UA Telephone: 01296 395000 www.buckscc.gov.uk
Ryemead, Tylers Green & Loudwater falls within Wycombe District Council	Wycombe District Council Queen Victoria Road High Wycombe Buckinghamshire HP11 1BB Telephone: 01494 461000 www.wycombe.gov.uk
Useful public and voluntary sector contacts	These can be found on page 28 of this pack
Phone numbers for all Strategic Directors and Heads of Service at Buckinghamshire County Council	These can be found on pages 29 to 31 of this pack
Members representing neighbouring County Council Divisions	www.buckscc.gov.uk/councillors/index.stm
Parish Information	www.buckscc.gov.uk/about/parishes.htm
Ryemead, Tylers Green & Loudwater falls within Wycombe Primary Care Trust	Wycombe PCT 3rd Floor, Rapid House 40 Oxford Road High Wycombe Buckinghamshire HP11 2EE Telephone: 01494 552200 www.wycombe-pct.nhs.uk

Electoral Division Profile Ryemead, Tylers Green & Loudwater

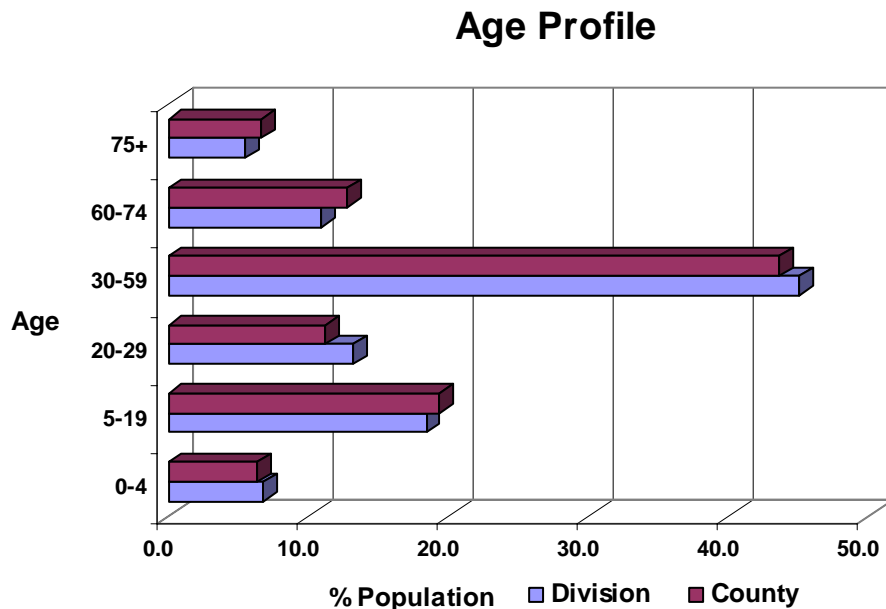
Key Statistics

The source of all statistics is the ONS 2001 Census

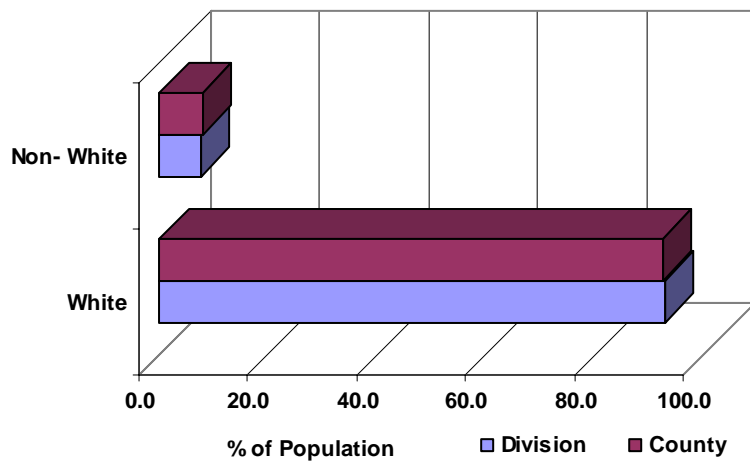
	Ryemead, Tylers Green & Loudwater	Buckinghamshire County
Total population	13,563	479,026
Households	5,551	188,086
% School children (5-19 yrs) of total population	18.4%	19.3%
% Retired (60+ yrs) of total population	16.5%	19.4%
% Economically active of total population	76.0%	71.8%
% Unemployed of economically active population	2.0%	2.0%
% Households with no car	13.1%	13.3%
% Social rented households of total households	12.1%	13.5%
% People with a limiting long-term illness	11.8%	12.8%

Age Profile

Ryemead, Tylers Green & Loudwater has a younger age profile than that of Buckinghamshire as a whole, with a greater representation of young children (0-4 years), young adults (20-29 years) and working adults (30-59 years). The Division is under-represented in people of retirement age.



Ethnic Group Overview

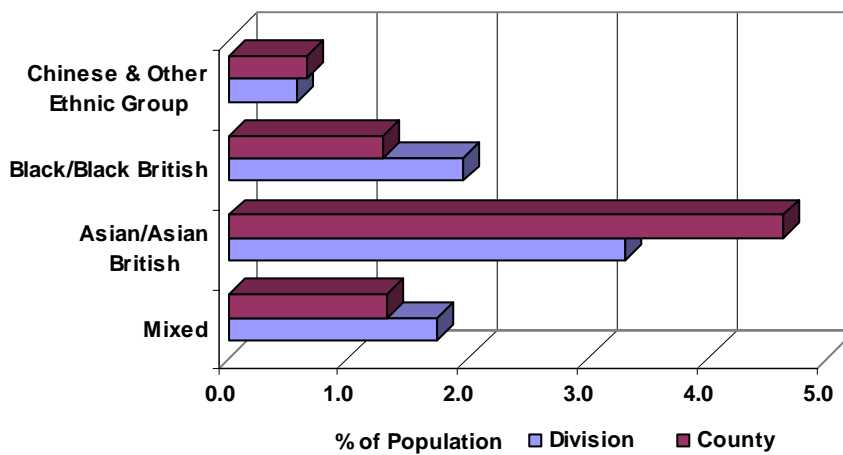


Ethnic Profile

93% of the Division's population is of white ethnic groups (White British, White Irish and White Other origin). At 7%, non-white ethnic groups in Ryemead, Tylers Green & Loudwater have a slightly lower than average representation when compared with the County as a whole (8%).

Ryemead, Tylers Green & Loudwater has an over-representation of Black/Black British and Mixed ethnic groups. These groups account for 1.9% and 1.7% of the Division's total population respectively. Despite being under-represented when compared to the Buckinghamshire average (4.6%) the Asian/Asian British ethnic group is the largest non-white ethnic group representing 3.3% of the Division's total population. The Chinese and Other ethnic group represents the smallest proportion of the population (0.6%).

Non-White Population



Community

- Health - 11.8% of people living in Ryemead, Tylers Green & Loudwater identified themselves as having a limiting long-term illness. This is slightly lower than the average for Buckinghamshire (12.8%).
- Qualifications - nearly one fifth (19.6%) of people in Ryemead, Tylers Green & Loudwater have no qualifications. This is lower than the average for Buckinghamshire (21.2%). Of the Division's population, 25.7% is qualified to degree level or higher, a similar level to Buckinghamshire (25.9%).
- Unemployment - within Ryemead, Tylers Green & Loudwater 2.0% of the economically active population are unemployed which is the same as the average for Buckinghamshire (2.0%).
- Affordable housing - 12.1% of households in Ryemead, Tylers Green & Loudwater are rented from the Council or other housing associations. This is lower than the average for Buckinghamshire (13.5%).

Local Matters

- High Wycombe Town Centre development work has commenced and will last three years. This work will have an impact on surrounding areas, with many on-street and off-street parking facilities being relocated for the duration of the works.
- The A40 London Road Urban Traffic Control works will install traffic lights at junctions as part of the Eastern Corridor study.
- The Highways Agency plans for the Handy Cross Scheme were approved by Ministers in early April and works are likely to start later this year.
- Quality Bus Partnerships have been introduced on three routes in the town of High Wycombe.
- Launched in 2004, Cressexpress is a frequent shuttle service taking commuters from High Wycombe train station to Cressex Business Park. From September the service will become part of the interim Park and Ride service to be operated from Cressex Island.
- There are issues of road noise and air quality in the vicinity of the M40.