

Aylesbury Vale Parkway

Infrastructure for the future

Welcome

Welcome to the Aylesbury Vale Parkway public exhibition. The proposed scheme aims to provide a public transport interchange comprising a new railway station, bus based park and ride facilities and around 400 car parking spaces. The scheme is being jointly funded by the Community Infrastructure Fund(CIF) from the Department for Transport(DfT), Buckinghamshire County Council and John Laing plc. We have been working together with other partner authorities including Aylesbury Vale District Council on this scheme. The scheme requires planning permission before it can be constructed and as part of the process for obtaining approval, we are seeking your views on the design of the scheme. Please discuss the proposals with the representatives and let us know what you think of them on the feedback form.

BACKGROUND

Why is Aylesbury Vale Parkway necessary?

AYLESBURY is an important growth area in the South-East region, with an additional 15,000 new homes planned to be built in the Aylesbury urban area between 2001 and 2021. Just over a quarter of the total new houses will be built in the new major development areas of Weedon Hill and Berryfields to the North of Aylesbury. As well as the homes and associated jobs planned within Buckinghamshire, new business will be attracted to Aylesbury Vale and wider area with the creation of 13,000 jobs by 2021.

As with all growth, the housing and economic development will cause an increase in car use in and around the town, which will consequently have negative impacts on the environment, increase congestion and lengthen the journey times for people travelling into and beyond Aylesbury. It is therefore essential to try and ease the impacts of this with measures to reduce the amount of traffic growth.

For the development to be sustainable and the new businesses to succeed, they need an integrated transport network which reduces the need for both residents of houses and employees of the local businesses to use their vehicles to access employment, homes, education and services.

Aylesbury Vale Parkway will be located next to the A41 adjacent to the Berryfields major development area (MDA) on the northwestern outskirts of the town and will be linked to the A413 near Weedon Hill via a new already approved link road. It will provide a public transport interchange to both intercept traffic before it enters Aylesbury and provide a quality bus service into Aylesbury and beyond as well as reliable train services directly into London.

The car park at the existing Aylesbury station is full early in the morning, so the provision of Aylesbury Vale Parkway will increase capacity during the whole day providing the opportunity for existing Aylesbury residents to travel when they might not have previously

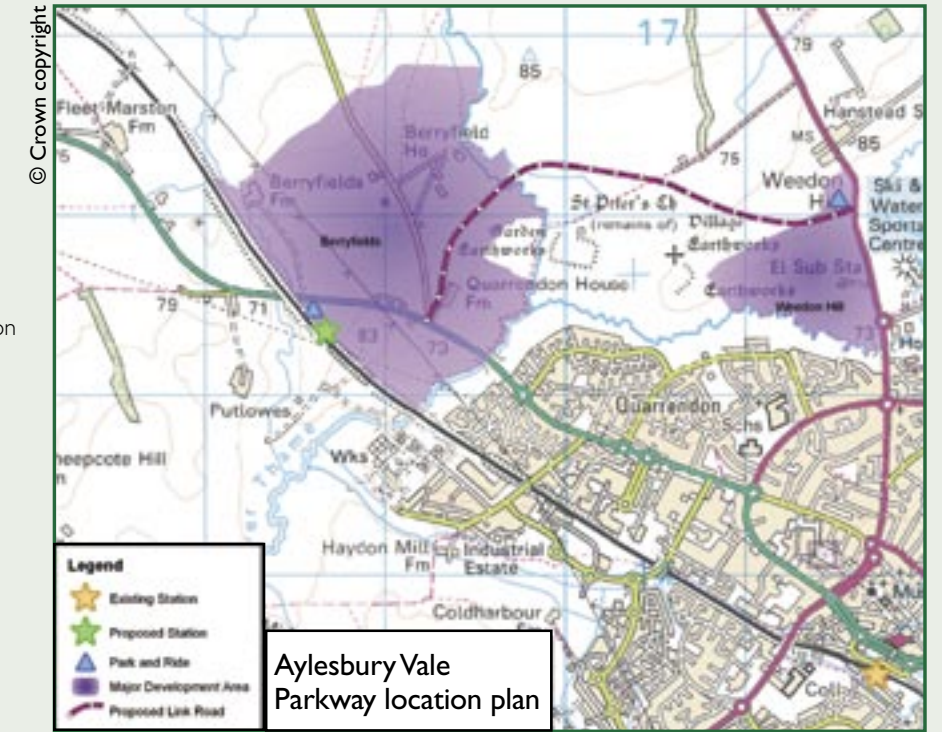
been able to park, as well as the ability for the new population of the town to travel to London to work if they wish. The public transport interchange will be made up of two elements:

- A new railway station, Aylesbury Vale Parkway, will be developed at the interchange site approximately 2 1/4 miles from the existing Aylesbury station. The service will be an extension of the current London Marylebone service via the existing Aylesbury town station.
- A bus based Park & Ride will also operate from the Parkway site, providing a high frequency service to and from the centre of Aylesbury. This will enable links to existing and future bus services leaving from the Aylesbury bus station to locations such as Milton Keynes and High Wycombe.

The A41 has been identified as a Primary Public Transport Corridor. Various measures along the Bicester Road are proposed to maintain the reliability of bus services and give preference to those using the Park and Ride. These proposals include altering the existing roundabouts at Jackson Road, Broadfields and Griffin Lane to traffic signal control with the provision of bus priority.

These improvements tie into the Public Transport Hub which is currently being implemented. More information on the Hub is available by visiting www.buckscc.gov.uk/roadworks/aylesburyhub.

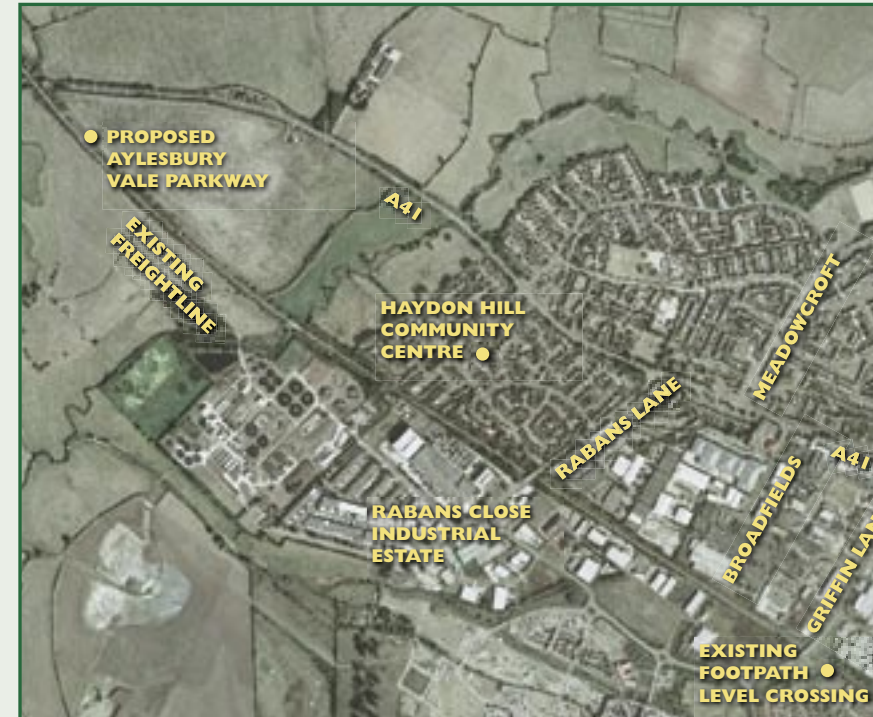
Other facilities to be provided at the interchange include bicycle stands and motorcycle parking to encourage people to use more sustainable modes of transport and therefore reduce the number of car journeys to Aylesbury Vale Parkway and their impact on the environment.



Map shows the scope of the Berryfields and Weedon Hill developments relative to the town



The proposed Berryfields development



Aylesbury Vale Parkway will be located north of the town on the existing freight line and near to the A41



Computer generated image of proposed design for the new Aylesbury Vale Parkway station viewed from the new platform

Feedback

We would appreciate your feedback on the scheme. Should you wish to make any comments on the scheme design, please complete the questionnaire at the end of this leaflet and either post it in the box provided or return it to us by Friday 9 February 2007 by using the freepost. You are also able to comment on the proposals online by visiting www.buckscc.gov.uk/aylesburyvaleparkway

Should you have any queries or require further information, please contact: Ian McGowan, Project Manager, Aylesbury Vale Parkway, Buckinghamshire County Council, County Hall, Aylesbury HP20 1UY. Tel: 01296 382831 e-mail: imgowan@buckscc.gov.uk