

Cressex Community School

January 2009

Welcome to our newsletter to keep you up to date with what is happening on our site

BAM Construction is building a new community school for Cressex. The new school will have Business and Enterprise specialist status and accommodate 1,100 students.

Our work will be in two phases. The first phase of our work involves building the new school which will be completed in summer 2010. The second phase, starting in September 2010, will include the demolition of all the old school buildings, constructing 'all weather' sports pitches, recreation areas, car parks, roads and a new roundabout at the existing school entrance.

Recent progress

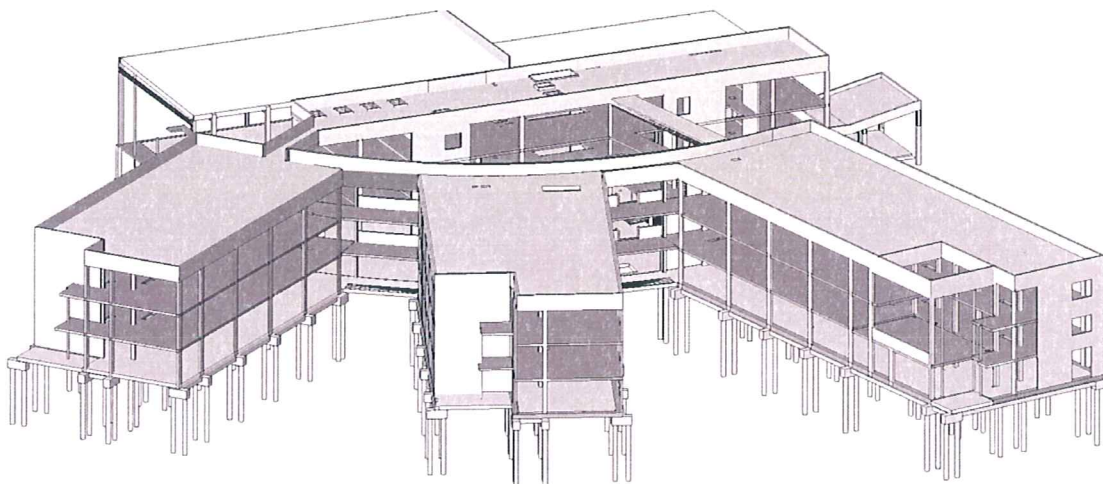
- In October, we changed our name from HBG to BAM. This is because we have taken the name of our parent company Royal BAM Group which is a very large and successful European Construction enterprise. It is simply a name change not a change of ownership. It does not affect the work we are doing here and the same people will be involved
- Now that the design of the school has been fully developed, we have started work on building

the school. It is going to be an environmentally friendly building with many features to reduce carbon emissions

- We are working on the foundations of the building. This involves a technique called piling, so that the foundations can bear the weight of the building. We have to drill holes deep into the ground and fill them with the concrete piles. The largest are approximately 17 metres long and carry a load of 240 tons.

What's next?

- A tower crane will be erected on the site in early March 2009
- We will be starting on the structure of the school and you will see it starting to take shape
- There will be a significant increase in vehicles coming in and out of the site entrance. We will do our best to manage this and ensure that there are warning signs for pedestrians and drivers
- We will continue to ensure that disruption to the existing school is kept to a minimum.



Drawing of the design and foundations of the new school

Cressex Community School

January 2009

About BAM

BAM Construction is part of BAM Construct UK one of the country's largest construction services organisations with a turnover of more than £1 billion. We operate throughout England, Scotland and Wales. Our European parent company is Royal BAM Group which employs over 25,000 people worldwide and has a turnover of €9 billion.

Considerate Contractors

BAM is an Associate Member of the Considerate Constructors Scheme. This means that we are committed to being a good neighbour and to being clean, respectful, safe, environmentally conscious, responsible and accountable. Our site will be inspected by the Scheme to make sure that we live up to these aims.

We try to work in a way that causes as little inconvenience as possible to our neighbours. We apologise for any unavoidable nuisance that may be caused during the work.

Please help us with safety

Construction sites can be dangerous. At BAM our top priority is the health and safety of our people working on the site and the local community affected by our work. If you need to contact us, please ring us or call to the site office but do not enter the site. Please make any children in your care aware that our building site is not a playground and that they must not enter the site. Thank you for your cooperation.

**A very happy New Year to everyone in the local community from all at BAM Construction.
Thank you for your continued co-operation with our work.**

If you want to contact the site team

If you have any questions or concerns about what's happening at the site, please visit our site offices or phone us on 01494 471188.

Our team is:

Project manager: Gareth Davies
Planner: Jon Morse
Quantity surveyor: Keith Newton
Design Manager: Tony Whitaker

Our partners:

Client: Buckinghamshire County Council

Visit our website at www.bam.co.uk