

Services for



Children and Young People  
in Buckinghamshire



# PRIMARY SCHOOLS DIRECTORY

FOR PARENTS WHO ARE APPLYING FOR A  
PRIMARY SCHOOL PLACE FROM SEPTEMBER 2012



General information	3
Introduction	3
The Schools List	5
Maps	70
Admission rules	79
Other helpful information	83
Other documents	83
Key	84

## Contents

## General information

We have tried to make the Directory as clear as possible but in some places we have had to use more complicated language. Please contact us if you would like us to explain anything to you.

At the time of going to print, the County Council is not aware of any objections to the Office of the Schools Adjudicator, about admission policies for any Buckinghamshire School.

Admissions policies are reviewed each year.

Additionally, at the time this Guide was produced, the Government had entered into consultation about revised Admissions and Appeals Codes. The outcomes will not be known until later this year, or early in 2012.

It is possible that other schools may become an Academy after this directory, and the Guide for Parents, have gone to print. If you would like to check a school's status at any time, speak to them direct and they will let you know.

## Introduction

The Primary Schools Directory is written for parents who are applying for a school place for their child. It includes a list of the primary schools in Buckinghamshire, maps to show you where the schools are and gives you more information about admission rules.

Make sure you read the Directory with the 'Starting School or Moving to Junior School Primary Guide for Buckinghamshire Parents'. The Admission Rules and Admission Numbers contained in the Directory relate to children starting Reception (Foundation 2) or Years 3 or 5 in September 2012 but we tell you where you can get further information if you are applying for a different year group.

If you have any questions about the admissions processes, please contact us.

# Contact Us

**Email** [admissions@buckscc.gov.uk](mailto:admissions@buckscc.gov.uk)

**Telephone** 01296 383250

## Office hours

9am – 5.30pm Monday to Thursday  
9am – 5pm Friday

**Fax** 01296 383560

## Post

The Admissions & Transport Team  
Achievement & Learning  
County Hall  
Aylesbury  
Buckinghamshire  
HP20 1UZ

# The Schools List

This contains information for each primary school, including:

- Whether the school is an infant school, junior school or a combined school
- Whether the school is a community school, a church school or an academy
- Address and other contact details
- The Department for Education (DfE) number, which you may need if you are making a paper application
- The number of children who were at the school in January 2011, to help you see how big a school is

The list shows each school's Admission Number (AN) which is the number of places that we can offer. This number reflects the size of the school and recognises the need to make best use of the accommodation and teaching resources. The number is set by using a DfE formula for pupil work places. It also allows for other things like the shape and mix of buildings and classrooms.

You can also see if a school has a nursery and if they provide any extended services such as before and after school clubs. Further information on nursery provision and before and after school clubs is available from the schools.

There is also a breakdown of the 2011 Reception and Junior allocation for each school.

You might find it helpful to look at more statistics about other years too. You can see these on our website: [www.buckscc.gov.uk/schooladmission](http://www.buckscc.gov.uk/schooladmission)



Contact	Headteacher/ Principal	School Type	Age Range	School Classification	Children attending in January 2011	Admission Number 2012	Early Years Provision	Area	DfE (DfES) No	Supplementary Form
---------	---------------------------	----------------	--------------	--------------------------	--	--------------------------	--------------------------	------	---------------------	-----------------------

**Ash Hill Primary School, Herbert Road, High Wycombe, Bucks HP13 7HT**

Phone: 01494 523218 Fax: 01494 537906 email: office@ashhill.bucks.sch.uk web: www.ashhill.org.uk	Jennifer Gamble	C	4 to 11	C	188	30	Yes	Wycombe	2132	NO
All applicants could be offered a place										

**Ashmead Combined School, Cole Road, Aylesbury, Bucks HP21 8SU**

Phone: 01296 484434 Fax: 01296 393425 email: office@ashmead.bucks.sch.uk web: www.ashmeadschool.org.uk	Michael Pearce & Marcus Pickover	C	4 to 11	C	485	70	Yes	Aylesbury Vale	2286	NO
All offered under rule 2 (catchment), 3 (siblings) and some under rule 7 (distance) to 1.184 miles. Some late catchment applicants could not be offered a place										

**Aston Clinton School, Twitchell Lane, Aston Clinton, Aylesbury, Bucks HP22 5JJ**

Phone: 01296 630276 Fax: 01296 632413 email: office@astonclinton.bucks.sch.uk web: www.astonclinton.ik.org	Helen Shepherd	C	4 to 11	C	291	54	Yes	Aylesbury Vale	2250	NO
All applicants could be offered a place										

**Bearbrook Combined School, Fowler Road, Aylesbury, Bucks HP19 7QP**

Phone: 01296 488331 Fax: 01296 337432 email: office@bearbrook.bucks.sch.uk web: www.bearbrookschool.ik.org	Marcus Faulkner	C	4 to 11	C	396	60	Yes	Aylesbury Vale	2225	NO
All applicants could be offered a place										

**Bedgrove Infant School, Ingram Avenue, Aylesbury, Bucks HP21 9DJ**

Phone: 01296 481353 Fax: 01296 424846 email: office@bedgrove-inf.bucks.sch.uk web:	Caroline Wreglesworth	I	4 to 7	F	473	120	Yes	Aylesbury Vale	2175	NO
All offered under rule 2 (catchment), 3 (siblings), 5 (nursery) and some under rule 6 (distance) to 1.176 miles Linked to: Bedgrove Junior School										
							Before and After School Provision: Before & After School Club			

**Bedgrove Junior School, Ingram Avenue, Aylesbury, Bucks HP21 9DN**

Phone: 01296 487973 Fax: 01296 395895 email: office@bedgrovejunior.bucks.sch.uk web:	Graham Norris	J	7-11	F	445	120		Aylesbury Vale	2169	NO
All applicants offered up to rule 4 (siblings) to 3.465 miles Linked to: Bedgrove Infant School										
							Before and After School Provision: see infant school			

Contact	Headteacher/ Principal	School Type	Age Range	School Classification	Children attending in January 2011	Admission Number 2012	Early Years Provision	Area	DfE (DfES) No	Supplementary Form
---------	---------------------------	----------------	--------------	--------------------------	--	--------------------------	--------------------------	------	---------------------	-----------------------

**Beechview School, Guinions Road, High Wycombe, Bucks HP13 7NT**

Phone: 01494 527113 Fax: 01494 443583 email: office@beechview.bucks.sch.uk web: www.beechview.bucks.sch.uk	Beverley Pickett-Jones	J	7-11	F	187	60		Wycombe	5203	NO
All applicants could be offered a place.					Before and After School Provision: Breakfast Club					

**Bell Lane Combined School and Nursery, Bell Lane, Amersham, Bucks HP6 6PF**

Phone: 01494 764521 Fax: 01494 549131 email: office@bell-lane.bucks.sch.uk	Debra Standage	C	4 to 11	C	152	25	Yes	Chiltern South Bucks	2234	NO
All applicants could be offered a place					Before and After School Provision: Breakfast Club					

**Bierton Church of England Combined School, Parsons Lane, Bierton, Aylesbury, Bucks HP22 5DF**

Phone: 01296 483110 Fax: 01296 427048 email: office@biertoncombined.bucks.sch.uk	Ian Hopkins	C	4 to 11	VC	278	40		Aylesbury Vale	3022	Yes - see website
All offered under rule 2 (catchment), 3 (siblings), and some under rule 4 (church) to 3.213 miles										

**Bledlow Ridge School, Church Lane, Bledlow Ridge, High Wycombe, Bucks HP14 4AZ**

Phone: 01494 481253 Fax: 01494 481253 email: office@bledlowridge.bucks.sch.uk	Ros Rochefort	C	4 to 11	C	136	20		Wycombe	2008	
All offered under rule 2 (catchment), 3 (siblings), and some under rule 7 (distance) to 3.729 miles										

**Booker Hill School, Field Road, Booker Hill Estate, High Wycombe, Bucks HP12 4LR**

Phone: 01494 521646 Fax: 01494 537412 email: office@bookerhill.bucks.sch.uk	Geraldine O'Brien	C	4 to 11	C	195	30	Yes	Wycombe	2126	
All offered under rule 2 (catchment), 3 (siblings), and some under rule 7 (distance) to 2.114 miles					Before and After School Provision: Breakfast Club					

**Bourton Meadow School, Burleigh Piece, Linden Village, Buckingham, Bucks MK18 7HX**

Phone: 01280 823374 Fax: 01280 823988 email: office@bourtonmeadow.bucks.sch.uk web: www.bourtonmeadow.bucks.sch.uk	Amanda Taylor-Hopkins	C	4 to 11	F	560	75	Yes	Aylesbury Vale	2340	
All applicants could be offered a place					Before and After School Provision: Before & After School Club					

**Brill Church of England Combined School, The Firs, Brill, Aylesbury, Bucks HP18 9RY**

Phone: 01844 237710 Fax: 01844 238831 email: office@brill.bucks.sch.uk web: www.brill.bucks.sch.uk	Andy Leach	C	4 to 11	VC	176	24	Yes	Aylesbury Vale	3023	Yes - see website
All offered under rule 2 (catchment), 3 (siblings), and some under rule 7 (distance) to 7.647 miles					Before and After School Provision: Before & After school club					

Contact	Headteacher/ Principal	School Type	Age Range	School Classification	Children attending in January 2011	Admission Number 2012	Early Years Provision	Area	DfE (DfES) No	Supplementary Form
---------	---------------------------	----------------	--------------	--------------------------	--	--------------------------	--------------------------	------	---------------------	-----------------------

**Brookmead School, High Street, Ivinghoe, Leighton Buzzard, Beds, LU7 9EX**

Phone: 01296 668543 Fax: 01296 661004 email: office@brookmead.bucks.sch.uk web: http://learning.brookmead.bucks.sch.uk/	Miss K Douglas	C	4 to 11	F	296	40+10	Yes	Aylesbury Vale	5200	
All applicants could be offered a place. 7+ allocations - all applicants could be offered a place.										

**Broughton Infant School, Narbeth Drive, Aylesbury, Bucks HP20 1NX**

Phone: 01296 415642 Fax: 01296 415642 email: office@broughtoninfant.bucks.sch.uk web: www.broughtoninfantschool.org.uk	Chris Williams	I	4 to 7	C	149	60	Yes	Aylesbury Vale	2179	
All offered under rule 2 (catchment), rule 3 (siblings), and some under rule 7 (distance) to 2.322 miles Linked to: Broughton Junior School										

**Broughton Junior School, Broughton Avenue, Aylesbury, Bucks HP20 1NQ**

Phone: 01296 423276 Fax: 01296 431761 email: office@broughton.bucks.sch.uk web:	Paul Stephens	J	7-11	C	180	60		Aylesbury Vale	2152	
All applicants could be offered a place. Linked to: Broughton Infant School										

**Brushwood Junior School, Brushwood Road, Chesham, Bucks HP5 3DW**

Phone: 01494 786023 Fax: 01494 793114 email: office@brushwood-jun.bucks.sch.uk web: www.brushwood-jun.bucks.sch.uk	Ray Plimsaul	J	7-11	F	178	66		Chiltern South Bucks	5205	
All applicants could be offered a place. Linked to: Newtown Infant School										

**Buckingham Park School, off Prince Rupert Drive, Aylesbury**

School due to open in September 2012 Further details to be confirmed								Aylesbury Vale		
Admission number will be 45 into Reception, 15 into Year 1 and 15 into Year 2										

**Buckingham Primary School, Foscott Way, Buckingham, Bucks MK18 1TT**

Phone: 01280 812864 Fax: 01280 812806 email: office@bps.bucks.sch.uk web: www.buckinghamprimary.co.uk	Jan Jones	C	4 to 11	C	501	60 + 30	Yes	Aylesbury Vale	2245	
All applicants could be offered a place, 7+ allocations – all applicants could be offered a place. Linked to: Maids Moreton Infant School										
Before and After School Provision: Before & After School Club										

Contact	Headteacher/ Principal	School Type	Age Range	School Classification	Children attending in January 2011	Admission Number 2012	Early Years Provision	Area	DfE (DfES) No	Supplementary Form
---------	---------------------------	----------------	--------------	--------------------------	--	--------------------------	--------------------------	------	---------------------	-----------------------

#### Burford School, Marlow Bottom , Marlow , Bucks SL7 3PQ

Phone: 01628 486655 Fax: 01628 898103 email: office@burfordschool.co.uk web: www.burfordschool.co.uk	Karol Whittington	C	4 to 11	C	419	60		Wycombe	2220	
All applicants could be offered a place.										

#### Butlers Court School, Wattleton Road, Beaconsfield, Bucks HP9 1RW

Phone: 01494 673538 Fax: 01494 670921 email: office@butlerscourt.bucks.sch.uk web: www.butlerscourt.bucks.sch.uk	Jeanette Marshall	C	4 to 11	C	420	60		Chiltern South Bucks	2186	
All offered under rule 2 (catchment) and some under rule 3 (siblings) to a distance of 0.674 miles										

#### Cadmore End Church of England School, Cadmore End, High Wycombe, Bucks HP14 3PE

Phone: 01494 881460 Fax: 01494 883653 email: office@cadmoreend.bucks.sch.uk web: www.cadmoreend.ik.org	Peter Durrant	C	4 to 11	VA	85	14	Yes	Wycombe	3329	Yes - see website
All applicants could be offered a place.										

#### Carrington Infant School, 2 Chapel Road, Flackwell Heath, High Wycombe, Bucks HP10 9AA

Phone: 01628 523356 Fax: 01628 532466 email: office@carrington-inf.bucks.sch.uk web: www.carrington-inf.bucks.sch.uk	Lynn McMeekin	I	4 to 7	C	178	60	Yes	Wycombe	2176	
All offered under rule 2 (catchment), 3 (siblings), and some under rule 7 (distance) to 1.623 miles. Linked to: Carrington Junior School										
Before and After School Provision: Before & After School Club										

#### Carrington Junior School, 4 Chapel Road, Flackwell Heath, High Wycombe, Bucks HP10 9AA

Phone: 01628 521457 Fax: 01628 532515 email: office@carrington.bucks.sch.uk web: www.carringtonjuniorschool.ik.org	Amanda Fell	J	7-11	C	230	60	Yes	Wycombe	2157	
All applicants could be offered a place. Linked to: Carrington Infant School										
Before and After School Provision: Before & After School Club										

#### Castlefield School, Middle Way, Castlefield, High Wycombe, Bucks HP12 3LE

Phone: 01494 436018 Fax: 01494 448557 email: office@castlefield.bucks.sch.uk web: www.castlefield.ik.org	Matthew Flannigan	C	4 to 11	F	368	75	Yes	Wycombe	5204	
All applicants could be offered a place.										
Before and After School Provision: Breakfast Club										

#### Cedar Park School, Cedar Avenue, Hazlemere, High Wycombe, Bucks HP15 7EF

Phone: 01494 711918 Fax: 01494 717125 email: office@cedarpark.bucks.sch.uk web: www.cedarpark.org.uk	Alastair Phillips	C	4 to 11	C	223	30	Yes	Wycombe	2005	
All offered under rule 2 (catchment), 3 (siblings), and some under rule 7 (distance) to 3.022 miles.										

Contact	Headteacher/ Principal	School Type	Age Range	School Classification	Children attending in January 2011	Admission Number 2012	Early Years Provision	Area	DfE (DfES) No	Supplementary Form
---------	---------------------------	----------------	--------------	--------------------------	--	--------------------------	--------------------------	------	---------------------	-----------------------

**Chalfont St Giles Infant School and Nursery, School Lane, Chalfont St Giles, Bucks HP8 4JJ**

Phone: 01494 872160 Fax: 01494 870560 email: office@csg-school.co.uk web: www.csg-school.co.uk	Elen Peal	I	4 to 7	C	197	60	Yes	Chiltern South Bucks	2016	
All offered under rule 2 (catchment) , rule 3 (siblings) and some under rule 7 (distance) to 3.451 miles Linked to: Chalfont St Giles Junior School										

**Chalfont St Giles Junior School, Parsonage Road, Chalfont St Giles, Bucks HP8 4JW**

Phone: 01494 873090 Fax: 01494 874949 email: office@csgjunior.org web: www.csgjunior.co.uk	Elen Peal (Acting)	J	7-11	C	227	60		Chiltern South Bucks	2182	
All offered under rule 2 (catchment) , rule 3 (siblings) and some under rule 6 (linked school) to a distance of 5.658 miles Linked to: Chalfont St Giles Infant School and Nursery										

**Chalfont St Peter Church of England Academy, Penn Road, Chalfont St Peter, Gerrards Cross, Bucks SL9 9SS**

Phone: 01753 883982 Fax: 01753 893360 email: office@csp-academy.org.uk web: www.csp-academy.org.uk	John Underwood	J	7-11	A	361	90		Chiltern South Bucks	3322	Yes - see website
All offered under rules 2 to 4 and some under rule 5 (regular church attendance) to a distance of 3.558 miles.					Before and After School Provision: Before & After School Club					

**Chalfont St Peter Infant School, Lovel End, Chalfont St Peter, Gerrards Cross, Bucks SL9 9PB**

Phone: 01753 884279 Fax: 01753 883680 email: office@chalfont-st-peter-inf.bucks.sch.uk	Jean Cornes	I	4 to 7	C	171	60	Yes	Chiltern South Bucks	2151	
All applicants could be offered a place										

**Chartridge Combined School, Cogdells Lane, Chartridge, Chesham, Bucks HP5 2TW**

Phone: 01494 837498 Fax: 01494 837819 email: office@chartridge.bucks.sch.uk web: www.chartridge.bucks.sch.uk	Steve Butler	C	4 to 11	C	199	30		Chiltern South Bucks	2197	
All offered under rule 2 (catchment) , rule 3 (siblings) and some under rule 7 (distance) to 2.293 miles										

**Cheddington Combined School, High Street, Cheddington, Leighton Buzzard, Beds, LU7 0RG**

Phone: 01296 668324 Fax: 01296 663859 email: office@cheddington.bucks.sch.uk web: www.cheddingtonschool.org	Kathryn Tamlyn	C	4 to 11	C	204	30	Yes	Aylesbury Vale	2019	
All offered under rule 2 (catchment), and some under rule 7 (distance) to 1.388 miles										

Contact	Headteacher/ Principal	School Type	Age Range	School Classification	Children attending in January 2011	Admission Number 2012	Early Years Provision	Area	DfE (DfES) No	Supplementary Form
---------	---------------------------	----------------	--------------	--------------------------	--	--------------------------	--------------------------	------	---------------------	-----------------------

**Chenies School, Village Road, Nr Chenies Village, Rickmansworth, Herts, WD3 6ER**

Phone: 01923 282546 Fax: 01923 286734 email: office@chenies.bucks.sch.uk web: www.chenies.bucks.sch.uk	Hannah Ewers	C	4 to 11	C	100	15		Chiltern South Bucks	2020	
All applicants could be offered a place										

**Chepping View Primary School, Cressex Road, High Wycombe, Bucks HP12 4PR**

Phone: 01494 444211/535564 Fax: 01494 436126 email: office@cheppingviewpri.bucks.sch.uk web: www.cheppingviewpri.bucks.sch.uk	Dick Millington	C	4 to 11	C	415	60		Wycombe	2229	
All offered under rule 2 (catchment), 3 (siblings), and some under rule 7 (distance) to 1.253 miles.										

**Chesham Bois Church of England Combined School, Bois Lane, Chesham Bois, Amersham, Bucks HP6 6DE**

Phone: 01494 726901 Fax: 01494 726042 email: office@chesham-bois.bucks.sch.uk web: www.cheshamboisschool.ik.org	Carol Brown	C	4 to 11	VC	209	30 + 5		Chiltern South Bucks	3034	Yes - see website
All offered under rule 2 (catchment) , rule 3 (siblings), rule 4 (church) and some under rule 7 (distance) to 0.443 miles Junior All applicants could be offered a place.										

**Chestnut Lane Infant School, 105 Chestnut Lane, Amersham, Bucks HP6 6EF**

Phone: 01494 727415 Fax: 01494 725969 email: office@chestnutlane.bucks.sch.uk web: http://chestnutlane.bucks.sch.uk	Mrs Christine Plimsaul	I	4 to 7	C	195	60	Yes	Chiltern South Bucks	2191	
Some offered under rule 2 (catchment with siblings and other catchment children) to a distance of 0.387 miles Linked to: Elangeni School										

**Claytons Primary School, Wendover Road, Bourne End, Bucks SL8 5NS**

Phone: 01628 525277 Fax: 01628 552779 email: office@claytons.bucks.sch.uk web: www.claytonprimary.ik.org	David Orford	C	4 to 11	C	328	45	Yes	Wycombe	2235	
All offered under rule 2 (catchment), 3 (siblings), and some under rule 7 (distance) to 1.745 miles.										

**Coleshill Church of England Infant School, Coleshill, Amersham, Bucks HP7 0LQ**

Phone: 01494 727206 Fax: 01494 727206 email: office@coleshill.bucks.sch.uk web: www.coleshillvillageschool.co.uk	Jenny Earp	I	4 to 7	VC	51	20		Chiltern South Bucks	3035	Yes - see website
All offered under rule 2 (catchment) , rule 3 (siblings), rule 4 (church) and some under rule 7 (distance) to 4.902 miles										

Contact	Headteacher/ Principal	School Type	Age Range	School Classification	Children attending in January 2011	Admission Number 2012	Early Years Provision	Area	DfE (DfES) No	Supplementary Form
<b>Cuddington and Dinton Church of England School , Upper Church Street, Cuddington, Aylesbury, Bucks HP18 0AP</b>										
Phone: 01844 291206 Fax: 01844 291911 email: office@cds.bucks.sch.uk web: www.cuddingtonanddintonschool.co.uk	Kim Price	C	4 to 11	VA	121	26		Aylesbury Vale	3309	Yes - see website
All offered under rule 2 (catchment siblings), 3 (siblings) and some under 4 (out catchment siblings ) to a distance of 3.89 miles										
<b>Curzon Church of England Combined School, Penn Street, Amersham, Bucks HP7 0QL</b>										
Phone: 01494 712251 Fax: email: office@curzon.bucks.sch.uk web:	Jacque Coles	C	4 to 11	VA	136	20 + 4		Chiltern South Bucks	3038	Yes - see website
All offered under rule 2 (catchment siblings), rule 3 (catchment), rule 4 (out catchment siblings) rule 5 (church) and some under rule 6 (distance) to 2.67 miles Junior: Some offered under rule 3 (catchment) to 2.306 miles										
<b>Dagnall School, Main Road South, Dagnall, Berkhamsted, Herts, HP4 1QX</b>										
Phone: 01442 842473 Fax: 01442 842473 email: office@dagnall.bucks.sch.uk web: www.dagnall.bucks.sch.uk	Jennifer Marriner-Kyle	I	4 to 7	C	27	19		Aylesbury Vale	2026	
All applicants could be offered a place Linked to: Edlesborough School										
<b>Danesfield School, Henley Road, Medmenham, Marlow, Bucks SL7 2EW</b>										
Phone: 01628 483031 Fax: 01628 476191 email: office@danefieldschool.bucks.sch.uk web: www.danesfieldschool.bucks.sch.uk	Robert Howell	C	4 to 11	F	393	56		Wycombe	5208	
All offered under rule 2 (catchment), 3 (siblings), and some under rule 6 (distance) to 5.015 miles.										
<b>Denham Village Infant School, Cheapside Lane, Denham, Uxbridge UB9 5AE</b>										
Phone: 01895 832768 Fax: 01895 832768 email: admin@denhamvillage.bucks.sch.uk web: www.denhamvillageinfant.ik.org	Catherine Simpsom	I	4 to 7	C	64	24		Chiltern South Bucks	2027	
All applicants could be offered a place Linked to: Tilehouse Combined School										
<b>Disraeli School and Childrens Centre, The, The Pastures, High Wycombe, Bucks HP13 5JS</b>										
Phone: 01494 445177 Fax: 01494 528796 email: office@disraeli.bucks.sch.uk web: www.disraelischool.co.uk	Jatinder Virk	C	4 to 11	C	496	60	Yes	Wycombe	2000	
All offered under rule 2 (catchment), 3 (siblings), and some under rule 7 (distance) to 2.399 miles. Before and After School Provision: Before & After School Club										

Contact	Headteacher/ Principal	School Type	Age Range	School Classification	Children attending in January 2011	Admission Number 2012	Early Years Provision	Area	DfE (DfES) No	Supplementary Form
---------	---------------------------	----------------	--------------	--------------------------	--	--------------------------	--------------------------	------	---------------------	-----------------------

**Dorney School, The, Harcourt Close, Dorney Reach, Maidenhead SL6 0DY**

Phone: 01628 620871 Fax: 01628 782073 email: office@dorney.bucks.sch.uk web: www.dorney.bucks.sch.uk	Helen Grove (Acting)	C	4 to 11	C	200	30		Chiltern South Bucks	2028	
All offered under rule 2 (catchment) , rule 3 (siblings) and some under rule 7 (distance) to 2.475 miles					Before and After School Provision: Before School Club					

**Downley School, The, Faulkner Way, Downley, High Wycombe, Bucks HP13 5AL**

Phone: 01494 527033 Fax: 01494 474485 email: office@downley.bucks.sch.uk web: www.downley.bucks.sch.uk	Sue Webb	C	4 to 11	C	420	60		Wycombe	2009	
Offered under rule 2 (catchment) to a distance of 0.785 miles.					Before and After School Provision: After School Club					

**Drayton Parslow Village School, Main Road, Drayton Parslow Milton Keynes, MK17 0JR**

Phone: 01296 720306 Fax: 01296 720306 email: office@draytonparslow.bucks.sch.uk web: www.draytonparslow.bucks.sch.uk	Alexandra Owens	I	4 to 7	C	40	15		Aylesbury Vale	2030	
All offered under rule 2 (catchment), rule 3 (siblings), and some under rule 7 (distance) to 8.11 miles (some late applications could not be offered) Linked to: St Michael's CE Combined School and Swanbourne CE School										

**Dropmore Infant School, Littleworth Road, Dropmore, Burnham, Slough, Berks, SL1 8PF**

Phone: 01753 644403 Fax: 01753 644403 email: office@dropmore.bucks.sch.uk web: www.dropmoreschool.ik.org	Hazel Watt	I	4 to 7	C	60	20		Chiltern South Bucks	2031	
All offered under rule 2 (catchment) , rule 3 (siblings) and some under rule 7 (distance) to 3.039 miles										

**East Claydon School, St Mary's Road, East Claydon, Buckingham, Bucks MK18 2LS**

Phone: 01296 712765 Fax: 01296 712765 email: office@eastclaydon.bucks.sch.uk web:	Barry Rogers (Acting)	I	4 to 7	C	20	15	Yes	Aylesbury Vale	2032	
All applicants could be offered a place Linked to: Winslow CE Combined School and Steeple Claydon Combined School										

**Edlesborough School, High Street, Edlesborough, Dunstable, Beds, LU6 2HS**

Phone: 01525 220431 Fax: 01525 221819 email: manager@edlesborough.bucks.sch.uk web: www.edlesborough.bucks.sch.uk	Jane Foster	C	4 to 11	C	263	30 + 10		Aylesbury Vale	2033	
All offered under rule 2 (catchment), rule 3 (siblings) and rule 7 (distance) to 4.859 miles. 7+all applicants could be offered a place. Linked to: Dagnall School										

Contact	Headteacher/ Principal	School Type	Age Range	School Classification	Children attending in January 2011	Admission Number 2012	Early Years Provision	Area	DfE (DfES) No	Supplementary Form
---------	---------------------------	----------------	--------------	--------------------------	--	--------------------------	--------------------------	------	---------------------	-----------------------

#### Elangeni School, Woodside Avenue, Amersham, Bucks HP6 6EG

Phone: 01494 721436 Fax: 01494 728409 email: office@elangeni.bucks.sch.uk web: www.elangeni.bucks.sch.uk	Alex Burns	J	7-11	C	240	60		Chiltern South Bucks	2282	
Some offered under rule 2 (catchment with siblings, catchment attending the linked primary school and other catchment children) to a distance of 0.281 miles Linked to: Chestnut Lane School					Before and After School Provision: Before & After School Club					

#### Elmhurst School, The, Dunsham Lane, Aylesbury, Bucks HP20 2DB

Phone: 01296 481380 Fax: 01296 481380 email: office@elmhurstmiddle.bucks.sch.uk	Diane De Wolf	C	4 to 11	C	296	55	Yes	Aylesbury Vale	2181	
All applicants could be offered a place										

#### Elmtree School, Elmtree Hill, Chesham, Bucks HP5 2PA

Phone: 01494 771474 Fax: 01494 785254 email: office@elmtree.bucks.sch.uk web: www.elmtree.bucks.sch.uk	Nicola Raher	I	4 to 7	C	173	60	Yes	Chiltern South Bucks	2213	
All offered under rule 2 (catchment) , rule 3 (siblings) and some under rule 7 (distance) to 2.606 miles Linked to: Thomas Harding Junior School										

#### Farnham Common Infant School, Beaconsfield Road, Farnham Common, Slough, Bucks SL2 3HS

Phone: 01753 645899 Fax: 01753 642153 email: office@farnhamcommon-inf.bucks.sch.uk web: www.farnhamcommoninfant.uk.org	Alison Fischer	I	4 to 7	C	189	60	Yes	Chiltern South Bucks	2271	
All offered under rule 2 (catchment) and some under rule 3 (siblings) to a distance of 7.167 miles Linked to: Farnham Common Junior School										

#### Farnham Common Junior School, Sherbourne Walk, Farnham Common Bucks SL2 3TZ

Phone: 01753 642923 Fax: 01753 646419 email: Office@farnham-jun.bucks.sch.uk web: www.farnham-jun.bucks.sch.uk	Mrs Helen Jones	J	7-11	C	242	58		Chiltern South Bucks	2142	
All offered under rule 2 (catchment) , rule 3 (siblings), rule 6 (linked school) and some under rule 7 (distance) to 4.746 miles Linked to: Farnham Common Infant School										

#### Foxes Piece School, Newfield Road, Marlow, Bucks SL7 1JW

Phone: 01628 483455 Fax: 01628 477005 email: office@foxespiece.bucks.sch.uk web: www.foxespiece.uk.org	Christine Taylor	C	4 to 11	C	94	30	Yes	Wycombe	2507	
All applicants could be offered a place.										

Contact	Headteacher/ Principal	School Type	Age Range	School Classification	Children attending in January 2011	Admission Number 2012	Early Years Provision	Area	DfE (DfES) No	Supplementary Form
---------	---------------------------	----------------	--------------	--------------------------	--	--------------------------	--------------------------	------	---------------------	-----------------------

**Frieth Church of England Combined School, Frieth, Henley-On-Thames, Oxon RG9 6PR**

Phone: 01494 881554 Fax: 01494 880734 email: office@frieth.bucks.sch.uk web:	Mrs Lindsay Phillips	C	4 to 11	VA	127	20		Wycombe	3330	
All applicants could be offered a place.										

**Fulmer Infant School, Alderbourne Lane, Fulmer, Slough, Bucks SL3 6JB**

Phone: 01753 662654 Fax: 01753 662654 email: office@fulmer.bucks.sch.uk web: www.fulmer.bucks.sch.uk	Mrs Cathy Hunt	I	4 to 7	C	61	22		Chiltern South Bucks	2037	
All offered under rule 2 (catchment) , rule 3 (siblings) and some under rule 7 (distance) to 4.076 miles										

**Gerrards Cross Church of England School. The, Moreland Drive, Gerrards Cross, Bucks SL9 8BD**

Phone: 01753 882731 Fax: 01753 892872 email: office@gerrardscross.bucks.sch.uk web: www.gerrardscross.bucks.sch.uk	Nicola Flower	C	4 to 11	VA	416	60		Chiltern South Bucks	5210	Yes - see website
All offered under rule ii (within ecclesiastical parish of St James, Gerrards Cross with St James, Fulmer and with sibling), and some under rule iii (live within ecclesiastical parish of St James, Gerrards Cross with St James, Fulmer) to a distance of 1.37 miles					Before and After School Provision: Breakfast Club and After School Club at Gerrards Cross Memorial Centre.					

**Great Horwood Church of England Combined School, School End, Great Horwood, Milton Keynes, Bucks MK17 0RG**

Phone: 01296 712622 Fax: 01296 713968 email: office@greathorwood.bucks.sch.uk web: www.greathorwood.bucks.sch.uk	Paul Adams	C	4 to 11	VC	119	15 + 15	Yes	Aylesbury Vale	3063	Yes - see website
All applicants could be offered a place. 7+ allocations - all applicants could be offered a place. Linked to: Thornborough Infant School and Whaddon CE Infant School										

**Great Kimble Church of England School, Church Lane, Great Kimble, Bucks HP17 9TH**

Phone: 01844 346189 Fax: 01844 346189 email: office@greatkimble.bucks.sch.uk web: www.greatkimble.bucks.sch.uk	Gillian Harrington	I	4 to 7	VC	50	20		Wycombe	3039	
All offered under rule 2 (catchment), 3 (siblings), and some under rule 7 (distance) to 2.297 miles. Linked to: Monks Risborough CE Combined, Princes Risborough Combined and Longwick CE Combined										

Contact	Headteacher/ Principal	School Type	Age Range	School Classification	Children attending in January 2011	Admission Number 2012	Early Years Provision	Area	DfE (DfES) No	Supplementary Form
---------	---------------------------	----------------	--------------	--------------------------	--	--------------------------	--------------------------	------	---------------------	-----------------------

**Great Kingshill Church of England Combined School, Cryers Hill Road, Great Kingshill,**

**High Wycombe, Bucks HP15 6JP**

Phone: 01494 713159 Fax: 01494 718239 email: office@greatkingshill.bucks.sch.uk web: www.greatkingshill.bucks.sch.uk	Roger Dodds	C	4 to 11	VA	409	58+2		Wycombe	3040	Yes - see website
All offered under rule2 (catchment), 3 (siblings), 5 (living in the ecclesiastical parish), 6 (outside the ecclesiastical parish with faith commitment) to a distance of 2.601 miles.					Before and After School Provision: Before & After School Club					

**Great Missenden Church of England Combined School, Church Street, Great Missenden,**

**Bucks HP16 0AZ**

Phone: 01494 862310 Fax: 01494 868300 email: office@grtmissenden.bucks.sch.uk web: www.grtmissenden.bucks.sch.uk	Rozalyn Thomson	C	4 to 11	VC	381	30 + 35	Yes	Chiltern South Bucks	3036	Yes - see website
All offered under rule 2 (catchment) , rule 3 (siblings), rule 4 (church) and some under rule 7 (distance) to 1.306 miles Junior All offered under rule2 (catchment), rule3 (siblings), rule 4 (church), rule 6 (linked school) and some under rule 7 (distance) to 5.287 miles Linked to: Little Missenden CE School, Hyde Heath Infant School, Lee Common CE School					Before and After School Provision: Before & After School Club					

**Grendon Underwood Combined School, Main Street, Grendon Underwood, Aylesbury,**

**Bucks HP18 0SP**

Phone: 01296 770388 Fax: 01296 770115 email: office@gucs.org.uk web: www.gucs.org.uk	Tim Heaton	C	4 to 11	C	231	30 + 30	Yes	Aylesbury Vale	2167	
All applicants could be offered a place - 9+ all applicants could be offered. Linked to: Marsh Gibbon School and Twyford CE School										

**Grenville Combined School, Chandos Road, Buckingham, Bucks MK18 1AP**

Phone: 01280 813273 Fax: 01280 813273 email: office@grenville.bucks.sch.uk web: www.grenville.bucks.sch.uk	Peter Wain	C	4 to 11	C	144	30	Yes	Aylesbury Vale	2339	
All applicants could be offered a place					Before and After School Provision: Before & After School Club					

**Haddenham Community Infant School, Woodways, Haddenham Bucks HP17 8DS**

Phone: 01844 291207 Fax: 01844 299261 email: office@haddenhaminfant.bucks.sch.uk web: www.haddenhaminfant.bucks.sch.uk	Justine Mitchener	I	4 to 7	C	88	30	Yes	Aylesbury Vale	2040	
All offered under rule 2 (catchment siblings) and some other catchment to a distance of 1.930 miles (some late in catchment applicants could not be offered) Linked to: Haddenham Junior School					Before and After School Provision: Before & After School Club					

Contact	Headteacher/ Principal	School Type	Age Range	School Classification	Children attending in January 2011	Admission Number 2012	Early Years Provision	Area	DfE (DfES) No	Supplementary Form
<b>Haddenham Community Junior School, Woodways, Haddenham Bucks HP17 8DS</b>										
Phone: 01844 291829 Fax: 01844 292534 email: office@haddenham-jun.bucks.sch.uk web: www.haddenham-jun.bucks.sch.uk	Sue Roberts	J	7-11	C	272	82		Aylesbury Vale	2276	
All applicants could be offered a place. Linked to: Haddenham Infant School, and Haddenham St Mary's CE School					Before and After School Provision: Before & After School Club					
<b>Haddenham St Mary's Church of England School, Aston Road, Haddenham Bucks HP17 8AF</b>										
Phone: 01844 291455 Fax: 01844 291455 email: office@haddenham-st-marys.bucks.sch.uk web: www.haddenham-st-marys.bucks.sch.uk	Hazel Hughes	I	4 to 7	VC	80	30	Yes	Aylesbury Vale	3073	Yes - see website
All offered under rule 2 (catchment), 3 (siblings), 4 (church) and some under rule 7 (distance) to 2.819 miles (late in catchment applicants could not be offered) Linked to: Haddenham Junior School					Before and After School Provision: After School Club at Haddenham Infants					
<b>Halton Combined School, Tring Road, Halton, Aylesbury, Bucks HP22 5PN</b>										
Phone: 01296 622264 Fax: 01296 623490 email: office@halton.bucks.sch.uk web: www.haltoncombined.uk.org	Su Scrimshaw	C	4 to 11	C	97	15	Yes	Aylesbury Vale	2333	
All under rule 2 (catchment), rule 3 (siblings) and some under distance to 6.585 miles (late in catchment applicants could not be offered)					Before and After School Provision: Before & After School Club					
<b>Hamilton Primary School, Priory Avenue, High Wycombe, Bucks HP13 6SG</b>										
Phone: 01494 522231 Fax: 01494 440576 email: office@hamilton-school.co.uk web: www.hamilton-school.co.uk	Graeme Aldous	C	4 to 11	F	621	90	Yes	Wycombe	5202	Yes - see website
All offered under rules 1-4 and some under rule 5 (distance) using random allocation					Before and After School Provision: Breakfast Club					
<b>Hannah Ball School, Philip Road, High Wycombe, Bucks HP13 7JS</b>										
Phone: 01494 522476 Fax: email: office@hannahball.bucks.sch.uk web: www.hannahball.bucks.sch.uk	Maggie Moore	C	4 to 9	F	69	30	Yes	Wycombe	2233	
All applicants could be offered a place.					Before and After School Provision: Breakfast Club					
<b>Hawridge &amp; Cholesbury Church of England School, Hawridge, Chesham, Bucks HP5 2UQ</b>										
Phone: 01494 758368 Fax: 01494 758629 email: office@hawridge-cholesbury.bucks.sch.uk web: www.hawridge-cholesbury.bucks.sch.uk	Louise Stallwood	C	4 to 11	VA	178	30		Chiltern South Bucks	3072	Yes - see website
All offered under rule 2(catchment/siblings), rule 3 (catchment), rule 4 (out catchment siblings) and some under rule 6(regular worship at church in catchment area) to a distance of 3.30 miles										

Contact	Headteacher/ Principal	School Type	Age Range	School Classification	Children attending in January 2011	Admission Number 2012	Early Years Provision	Area	DfE (DfES) No	Supplementary Form
---------	---------------------------	----------------	--------------	--------------------------	--	--------------------------	--------------------------	------	---------------------	-----------------------

**Haydon Abbey School, Weedon Road, Aylesbury, Bucks HP19 9NS**

Phone: 01296 482278 Fax: 01296 336709 email: office@haydonabbey.bucks.sch.uk web: www.haydonabbey.bucks.sch.uk	Judith Ejdowski	C	4 to 11	C	358	56	Yes	Aylesbury Vale	2162	
All under rule 2 (catchment) timely applications, rule 3 (siblings) and some under rule 7 (distance) to 2.436 miles										

**Hazlemere Church of England Combined School, Amersham Road, Hazlemere, High Wycombe, Bucks HP15 7PZ**

Phone: 01494 521420 Fax: 01494 761703 email: enquiries@hazlemere-ce.bucks.sch.uk web: www.hazlemere-ce.bucks.sch.uk	Nick Waldron	C	4 to 11	VA	260	30 + 3	Yes	Wycombe	3333	Yes - see website
All offered under rule 2 (siblings), 3 (parents worship at one of the Anglican worship centres in parish), 4 (living in parish with parents who worship at a Christian church affiliated to Churches Together in Britain or Evangelical Alliance), 5 (living in parish), 6 (live out of parish), and some under rule 6 (out of parish) to a distance of 1.644 miles. 7+ allocations - offered up to Rule 5 ( living in the parish) to a distance of 0.448 miles.										
Before and After School Provision: Breakfast Club										

**High Ash Church of England Combined School, Pound Hill, Great Brickhill, Milton Keynes, Bucks MK17 9AS**

Phone: 01525 261620 Fax: 01525 261988 email: office@highash.bucks.sch.uk web: www.highashschool.co.uk	Louise Eaton	C	4 to 11	VC	231	40		Aylesbury Vale	3025	Yes - see website
All offered under rule 2 (catchment), rule 3 (siblings), and some under rule 7 (distance) to 4.811 miles.										
Before and After School Provision: After School Club at Bow Brickhill										

**High Wycombe Church of England Combined School, Loakes Road, High Wycombe, Bucks HP11 1DR**

Phone: 01494 524220 Fax: 01494 539330 email: office@highwycombecombined.bucks.sch.uk web: www.hwce.co.uk	Celine Hawkins	C	4 to 11	VA	210	30		Wycombe	3334	Yes - see website
All offered under rule 2 (live in benefice & worship at specific churches), and rule 3 (siblings)										

**Highworth Combined School and Nursery, Highworth Close, High Wycombe, Bucks HP13 7PH**

Phone: 01494 525534 Fax: 01494 536681 email: office@highworth.bucks.sch.uk web: www.highworth.bucks.sch.uk	Graeme Kilner	C	4 to 11	C	455	56	Yes	Wycombe	2352	
All offered under rule 2 (catchment), 3 (siblings), and some under rule 7 (distance) to 1.119 miles.										
Before and After School Provision: Before & After School Club										

Contact	Headteacher/ Principal	School Type	Age Range	School Classification	Children attending in January 2011	Admission Number 2012	Early Years Provision	Area	DfE (DfES) No	Supplementary Form
<b>Holmer Green Infant School, Watchet Lane, Holmer Green, High Wycombe, Bucks HP15 6UG</b>										
Phone: 01494 712050 Fax: 01494 716503 email: office@holmergreenfirst.bucks.sch.uk web: www.holmergreenfirst.bucks.sch.uk	Sue Huntley	I	4 to 7	C	176	60	Yes	Chiltern South Bucks	2150	
All applicants could be offered a place Linked to: Holmer Green Junior School					Before and After School Provision: Before & After School Club					
<b>Holmer Green Junior School, The Common, Holmer Green, High Wycombe, Bucks HP15 6TD</b>										
Phone: 01494 713000 Fax: 01494 713000 email: office@holmergreen-jun.bucks.sch.uk web: www.holmergreen-jun.bucks.sch.uk	Rebecca Campbell	J	7-11	C	236	60		Chiltern South Bucks	2200	
All offered under rule 2 (catchment) , rule 3 (siblings), rule 6 (linked school) and some under rule 7 (distance) to 4.746 miles Linked to: Holmer Green Infant School										
<b>Holtspur School, Cherry Tree Road, Holtspur, Beaconsfield, Bucks HP9 1BH</b>										
Phone: 01494 674325 Fax: 01494 674325 email: office@holtspur.bucks.sch.uk web: www.holtspur.bucks.sch.uk	Bronwen Zeun	C	4 to 11	C	190	30		Chiltern South Bucks	2345	
All offered under rule 2 (catchment) , rule 3 (siblings) and some under rule 7 (distance) to 4.122 miles										
<b>Holy Trinity Church of England School, Wethered Road, Marlow, Bucks SL7 3AG</b>										
Phone: 01628 482831 Fax: 01628 487115 email: office@holytrinity.bucks.sch.uk web: www.holytrinity.bucks.sch.uk	Catherine Carter	J	7-11	VA	290	80		Wycombe	3347	Yes - see website
Places offered up to Rule 7 (catchment) to a distance of 0.694 miles. Linked to: Little Marlow CE School and Marlow CE School					Before and After School Provision: Before & After School Club					
<b>Hughenden Primary School, Spring Valley Drive, Hughenden Valley, High Wycombe, Bucks HP14 4LR</b>										
Phone: 01494 562501 Fax: email: office@hughenden.bucks.sch.uk web: www.hughenden.bucks.sch.uk	Sandy McClelland	C	4 to 11	C	112	15		Wycombe	2242	
All offered under rule 2 (catchment), rule 3 (siblings), and some under rule 7 (distance) to 2.701 miles.					Before and After School Provision: After School Club					
<b>Hyde Heath Infant School, Weedon Hill, Hyde Heath, Amersham, Bucks HP6 5RW</b>										
Phone: 01494 783835 Fax: 01494 783835 email: office@hydeheath.bucks.sch.uk web: www.hydeheath.bucks.sch.uk	Julie Mouldsdales	I	4 to 7	C	63	22	Yes	Chiltern South Bucks	2059	
All applicants could be offered a place Linked to: Great Missenden CE Combined School										

Contact	Headteacher/ Principal	School Type	Age Range	School Classification	Children attending in January 2011	Admission Number 2012	Early Years Provision	Area	DfE (DfES) No	Supplementary Form
---------	---------------------------	----------------	--------------	--------------------------	--	--------------------------	--------------------------	------	---------------------	-----------------------

**Ibstone Church of England Infant School, Ibstone, High Wycombe, Bucks HP14 3XZ**

Phone: 01491 638281 Fax: 01491 638198 email: office@ibstone.bucks.sch.uk web: www.ibstoneschool.org.uk	Mrs Michelle Masters	I	4 to 7	VA	25	13		Wycombe	3335	Yes - see website
All applicants could be offered a place. Linked to: Stokenchurch Primary School					Before and After School Provision: After School Club					

**Ickford Combined School, Sheldon Road, Ickford, Aylesbury, Bucks HP18 9HY**

Phone: 01844 339261 Fax: 01844 339261 email: office@ickford.bucks.sch.uk web: www.ickford.bucks.sch.uk	John Ronane	C	4 to 11	C	123	13	Yes	Aylesbury Vale	2060	
All applicants could be offered a place					Before and After School Provision: Before & After School Club					

**Iver Heath Infant School and Nursery, Slough Road, Iver Heath, Bucks SLO 0DT**

Phone: 01753 652262 Fax: 01753 653310 email: office@iverheath-inf.bucks.sch.uk web: www.iverheathinf.ik.org	Judy Baker	I	4 to 7	C	216	60	Yes	Chiltern South Bucks	2270	
All offered under rule 2 (catchment) , rule 3 (siblings) and some under rule 7 (distance) to 2.882 miles Linked to: Iver Heath Junior School										

**Iver Heath Junior School, St Margaret's Close, Iver Heath, Bucks SLO 0DA**

Phone: 01753 651382 Fax: 01753 655135 email: office@iverheath-jun.bucks.sch.uk web: www.iverheath-jun.bucks.sch.uk	Marcus Holloway	J	7-11	C	198	60		Chiltern South Bucks	2168	
All applicants could be offered a place Linked to: Iver Heath Infant School and Nursery					Before and After School Provision: Breakfast Club					

**Iver Village Infant School, West Square, off Grange Way, Iver, Bucks SLO 9NW**

Phone: 01753 655104 Fax: 01753 630840 email: office@iver-inf.bucks.sch.uk web: www.ivervillageinfantschool.ik.org	Sam Woodcock	I	4 to 7	C	141	55	Yes	Chiltern South Bucks	2315	
All offered under rule 2 (catchment) , rule 3 (siblings) and some under rule 7 (distance) to 3.933 miles Linked to: Iver Village Junior School										

**Iver Village Junior School, High Street, Iver, Bucks SLO 9QA**

Phone: 01753 653059 Fax: 01753 650027 email: office@ivervillage-jun.bucks.sch.uk	Chris Collis	J	7-11	C	163	55		Chiltern South Bucks	2061	
All applicants could be offered a place Linked to: Iver Village Infant School										

Contact	Headteacher/ Principal	School Type	Age Range	School Classification	Children attending in January 2011	Admission Number 2012	Early Years Provision	Area	DfE (DfES) No	Supplementary Form
---------	---------------------------	----------------	--------------	--------------------------	--	--------------------------	--------------------------	------	---------------------	-----------------------

#### The John Hampden School, Wharf Road, Wendover, Aylesbury, Bucks HP22 6HF

Phone: 01296 622629 Fax: 01296 622701 email: office@jhampden.bucks.sch.uk web: www.jhampden.bucks.sch.uk	Sue Barnes	I	4 to 7	C	291	90	Yes	Aylesbury Vale	2189	
All offered under rule 2 (catchment), rule 3 (siblings), and some under rule 7 (distance) to 0.992 miles Linked to: Wendover CE Junior School					Before and After School Provision: Before & After School Club					

#### Jordans School, Puers Lane, Jordans, Beaconsfield, Bucks HP9 2TE

Phone: 01494 874217 Fax: email: office@jordans.bucks.sch.uk web: www.jordans.bucks.sch.uk	Patricia Farmer	I	4 to 7	C	65	22		Chiltern South Bucks	2065	
All offered under rule 2 (catchment) , rule 3 (siblings) and some under rule 7 (distance) to 3.196 miles										

#### Juniper Hill School, Churchill Close, Flackwell Heath, High Wycombe, Bucks HP10 9LA

Phone: 01628 523536 Fax: 01628 532952 email: office@juniperhill.bucks.sch.uk web: www.juniperhill.bucks.sch.uk	Hilary Nohavicka	C	4 to 11	C	427	60		Wycombe	2199	
All offered under rule 2 (catchment), rule 3 (siblings), and some under rule 7 (distance) to 1.380 miles.										

#### King's Wood School, Hollis Road, High Wycombe , HP13 7UN

Phone: 01494 521401 Fax: 01494 443265 email: office@kingswood.bucks.sch.uk web: www.kingswoodhw.co.uk	Mrs Janice Freeman	C	4 to 11	C	334	54+6	Yes	Wycombe	3377	
All applicants could be offered a place.										

#### Lane End School, Lane End, High Wycombe, Bucks HP14 3EJ

Phone: 01494 881169 Fax: 01494 883640 email: office@laneendprimary.bucks.sch.uk	Denise Starr	C	4 to 11	C	139	30	Yes	Wycombe	2228	
All applicants could be offered a place.										

#### Lee Common Church of England School, Lee Common, Great Missenden, Bucks HP16 9JH

Phone: 01494 837267 Fax: 01494 837267 email: office@leecommon.bucks.sch.uk web: www.leecommon.org	Alison Lawes	I	4 to 7	VC	52	20		Chiltern South Bucks	3037	Yes - see website
All applicants could be offered a place Linked to: Great Missenden CE Combined School										

Contact	Headteacher/ Principal	School Type	Age Range	School Classification	Children attending in January 2011	Admission Number 2012	Early Years Provision	Area	DfE (DfES) No	Supplementary Form
---------	---------------------------	----------------	--------------	--------------------------	--	--------------------------	--------------------------	------	---------------------	-----------------------

#### Lent Rise Combined School, Coulson Way, Burnham, Bucks SL1 7NP

Phone: 01628 662913 Fax: 01628 669200 email: office@lentrise.bucks.sch.uk web: www.lentrise.bucks.sch.uk	Mrs Jill Watson (Acting Head)	C	4 to 11	C	415	60		Chiltern South Bucks	2226	
All offered under rule 2 (catchment) , rule 3 (siblings) and some under rule 7 (distance) to 0.504 miles										

#### Ley Hill School, Ley Hill, Chesham, Bucks HP5 1YF

Phone: 01494 784205 Fax: 01494 784055 email: office@leyhill.bucks.sch.uk web: www.leyhill.bucks.sch.uk	Nigel Hoff	C	4 to 11	C	200	30	Yes	Chiltern South Bucks	2068	
All offered under rule 2 (catchment) , rule 3 (siblings) and some under rule 7 (distance) to 1.545 miles										
Before and After School Provision: After School Club										

#### Little Chalfont Primary School, Oakington Avenue, Little Chalfont, Amersham, Bucks HP6 6SX

Phone: 01494 762109 Fax: 01494 765210 email: office@littlechalfont.bucks.sch.uk web: www.littlechalfontprimaryschool.co.uk	Tracey Dowsing	C	4 to 11	C	228	30 + 4		Chiltern South Bucks	2153	
Some offered under rule 2 (catchment with siblings and other catchment children) to a distance of 1.423 miles Junior All offered under rule 3 (catchment) and some under rule7 (distance ) to 0.623 miles										

#### Little Kingshill Combined School, Windsor Lane, Little Kingshill, Great Missenden, Bucks

HP16 0DZ

Phone: 01494 863744 Fax: 01494 862488 email: office@littlekingshill.bucks.sch.uk web: http://learning.littlekingshill.bucks.sch.uk	Grishma Sutaria- Cassidy	C	4 to 11	C	236	30	Yes	Chiltern South Bucks	2071	
All applicants could be offered a place										

#### Little Marlow CE School, School Lane, Little Marlow, Marlow, Bucks SL7 3SA

Phone: 01628 473316 Fax: 01628 473316 email: office@littlemarlow.bucks.sch.uk web: www.littlemarlow.ik.org	Anne Harding	I	4 to 7	VA	55	20		Wycombe	3337	Yes - see website
All offered under rule 2 (catchment), rule 3 (siblings), rule 4 (siblings at Holy Trinity CE School), rule 6 (regular church attendance for 12 months prior to application), and some under rule 9 (distance) to 2.18 miles. Linked to: Holy Trinity CE School										

Contact	Headteacher/ Principal	School Type	Age Range	School Classification	Children attending in January 2011	Admission Number 2012	Early Years Provision	Area	DfE (DfES) No	Supplementary Form
---------	---------------------------	----------------	--------------	--------------------------	--	--------------------------	--------------------------	------	---------------------	-----------------------

**Little Missenden Church of England School, Little Missenden, Bucks , HP7 0RA**

Phone: 01494 862021 Fax: 01494 862021 email: office@littlemissenden.bucks.sch.uk web: www.littlemissenden.school.org	Julianna Hall	I	4 to 7	VA	39	15		Chiltern South Bucks	3325	Yes - see website
All applicants could be offered a place Linked to: Great Missenden CE Combined School										

**Little Spring School, Greenway, Chesham , HP5 2BY**

Phone: 01494 783070 Fax: 01494 776372 email: office@littlespring.bucks.sch.uk web: www.littlespring.co.uk	Mary Paton	C	4 to 11	C	183	30	Yes	Chiltern South Bucks	2012	
All applicants could be offered a place Before and After School Provision: Breakfast Club										

**Long Crendon School, Chilton Road, Long Crendon, Aylesbury, Bucks HP18 9BZ**

Phone: 01844 208225 Fax: 01844 208225 email: office@longcrendon.bucks.sch.uk web: www.longcrendon.bucks.sch.uk	Sue Stamp	C	4 to 11	C	216	30	Yes	Aylesbury Vale	2261	
All (timely applications) offered under rule 2 (catchment), and some under rule 3 (siblings) to a distance of 4.280 miles Before and After School Provision: Before & After School Club										

**Longwick Church of England Combined School, Walnut Tree Lane, Longwick, Princes Risborough, Bucks HP27 9SJ**

Phone: 01844 344769 Fax: 01844 273642 email: office@longwick.bucks.sch.uk web: www.longwick.bucks.sch.uk	Christine Sharples	C	4 to 11	VC	179	26 + 4		Wycombe	3043	Yes - see website
All applicants could be offered a place. 7+ allocations - No places offered. Linked to: Great Kimble CE School										

**Loudwater Combined School, School Way, Kingsmead Road, Loudwater, High Wycombe, Bucks HP11 1JJ**

Phone: 01494 524919 Fax: 01494 538313 email: office@loudwater.bucks.sch.uk web: www.loudwater.bucks.sch.uk	Clare Cunningham	C	4 to 11	F	202	30		Wycombe	5206	
All offered under rules 2 (catchment) and 3 (siblings) and some under rule 5 (distance) to 1.321 miles. Before and After School Provision: Breakfast Club										

**Maids Moreton Church of England School, Avenue Road, Maids Moreton, Buckingham, Bucks MK18 1QA**

Phone: 01280 812058 Fax: email: office@maidsmoreton.bucks.sch.uk web: www.maidsmoreton.bucks.sch.uk	Keira Ainsworth 'Senior Teacher in Charge'	I	4 to 7	VC	49	30		Aylesbury Vale	3057	Yes - see website
All applicants could be offered Linked to: Buckingham Primary School										

Contact	Headteacher/ Principal	School Type	Age Range	School Classification	Children attending in January 2011	Admission Number 2012	Early Years Provision	Area	DfE (DfES) No	Supplementary Form
<b>Manor Farm Community Infant School, Rose Avenue, Hazlemere, High Wycombe, Bucks</b>					<b>HP15 7PH</b>					
Phone: 01494 814281 Fax: 01494 814281 email: admin@manorfarm-inf.bucks.sch.uk web: www.manorfarm-inf.bucks.sch.uk	Paula Coppins (Acting)	I	4 to 7	C	222	75	Yes	Wycombe	2196	
All applicants could be offered a place. Linked to: Manor Farm Community Junior School					Before and After School Provision: After School Club					
<b>Manor Farm Community Junior School, Rose Avenue, Hazlemere, High Wycombe, Bucks</b>					<b>HP15 7PH</b>					
Phone: 01494 814622 Fax: 01494 817166 email: admin@manorfarm.bucks.sch.uk web: www.manorfarm.bucks.sch.uk	Lynn Kirk	J	7-11	C	244	60	Yes	Wycombe	2263	
Places offered up to rule 3 ( siblings at linked primary) to a distance of 2.298 miles. Linked to: Manor Farm Community Infant School					Before and After School Provision: Before & After School Club					
<b>Marlow Church of England Infant School, Sandygate Road, Marlow, Bucks SL7 3AZ</b>										
Phone: 01628 483983 Fax: email: office@marlow-infant.bucks.sch.uk web: www.marlow-infant.ik.org	Elizabeth Toohig	I	4 to 7	VA	176	60	Yes	Wycombe	3044	Yes - see website
All offered under rule 2 (catchment), 3 (siblings at school), 4 (siblings at feeder), 5 (church), 7 (social needs), and some under rule 8 (distance) to 0.891 miles. Linked to: Holy Trinity CE School					Before and After School Provision: Before & After School Club					
<b>Marsh Gibbon Church of England School, Castle Street, Marsh Gibbon, Bicester, Oxon,</b>					<b>OX27 0HJ</b>					
Phone: 01869 277268 Fax: email: office@marshgibbon.bucks.sch.uk web: www.marshgibbonschool.co.uk	Julie Hickey	First	4 to 9	VA	120	30		Aylesbury Vale	3012	
All applicants could be offered a place Linked to: Grendon Underwood Combined School					Before and After School Provision: After School club					
<b>Marsh School, Abbey Barn Road, High Wycombe, Bucks HP11 1RW</b>										
Phone: 01494 522756 Fax: 01494 538016 email: office@marsh.bucks.sch.uk web: www.marshschool.com.	Rebecca Morrisson	I	4 to 7	C	183	45	Yes	Wycombe	2049	
All offered under rule 2 (catchment), rule 3 (siblings), and some under rule 7 (distance) to 1.091 miles.										
<b>Marsworth Church of England Infant School, Vicarage Road, Marsworth, Tring, Herts, HP23 4LT</b>										
Phone: 01296 668440 Fax: 01296 668440 email: office@marsworth.bucks.sch.uk web: www.marsworthschool.com	Yvonne Goodwin	I	4 to 7	VA	38	15	Yes	Aylesbury Vale	3315	Yes - see website
All applicants could be offered a place										

Contact	Headteacher/ Principal	School Type	Age Range	School Classification	Children attending in January 2011	Admission Number 2012	Early Years Provision	Area	DfE (DfES) No	Supplementary Form
---------	---------------------------	----------------	--------------	--------------------------	--	--------------------------	--------------------------	------	---------------------	-----------------------

**Mary Towerton School, The, Water End Lane, Studley Green, High Wycombe, Bucks HP14 3XN**

Phone: 01494 482384 Fax: 01494 484517 email: office@marytowerton.bucks.sch.uk web: www.marytowerton.ik.org	Sarah Leighton	I	4 to 7	C	40	18		Wycombe	2007	
All applicants could be offered a place. Linked to: Stokenchurch Primary School										

**Meadows School, The, School Road, Wooburn Green, Bucks HP10 0HF**

Phone: 01628 521634 Fax: 01628 521799 email: office@themeadows.bucks.sch.uk web: www.themeadows.bucks.sch.uk	Phyllis Carr	C	4 to 11	C	145	30	Yes	Wycombe	2123	
All applicants could be offered a place. Before and After School Provision: Breakfast Club										

**Millbrook Combined School, Mill End Road, High Wycombe, Bucks HP12 4BA**

Phone: 01494 524791 Fax: 01494 524791 email: office@millbrook.bucks.sch.uk web: www.millbrook.bucks.sch.uk	Debra Mansfield	C	4 to 11	C	381	60	Yes	Wycombe	2006	
All applicants could be offered a place. Before and After School Provision: Before & After School Club										

**Monks Risborough Church of England Primary School, Peters Lane, Monks Risborough Bucks HP27 9LZ**

Phone: 01844 345590 Fax: 01844 274978 email: office@mrisbury.bucks.sch.uk web: www.monksprimary.ik.org	Stephen Nunn	C	4 to 11	VC	214	26 + 6		Wycombe	3046	Yes - see website
All offered under rule 2 (catchment), and some under rule 3 (siblings) to a distance of 1.185 miles. 7+ allocations - all applicants could be offered a place. Linked to: Great Kimble CE School										

**Mursley Church of England School, Main Street, Mursley, Milton Keynes, Bucks MK17 0RT**

Phone: 01296 720305 Fax: 01296 720305 email: office@mursley.bucks.sch.uk web: www.draxtonparslow.bucks.sch.uk	Alexandra Owens (Acting)	I	4 to 7	VC	42	15		Aylesbury Vale	3068	Yes - see website
All offered under rule 2 (catchment), rule 3 (siblings), and some under rule 7 (distance) to 4.672 miles Linked to: Winslow CE Combined School and Swanbourne CE School										

**Naphill & Walters Ash School, Kilnwood, Walters Ash, High Wycombe, Bucks HP14 4UL**

Phone: 01494 562813 Fax: 01494 565806 email: office@nap-walt.bucks.sch.uk web: www.nap-walt.bucks.sch.uk	Kerenza Gwynn	C	4 to 11	C	374	60	Yes	Wycombe	2335	
All applicants could be offered a place. Before and After School Provision: Before & After School Club										

Contact	Headteacher/ Principal	School Type	Age Range	School Classification	Children attending in January 2011	Admission Number 2012	Early Years Provision	Area	DfE (DfES) No	Supplementary Form
<b>Newton Longville Church of England Combined School, School Drive, Newton Longville, Bucks</b>					<b>MK17 0BZ</b>					
Phone: 01908 373428 Fax: 01908 648416 email: office@newtonlongville.bucks.sch.uk web: www.newton-longville-school.co.uk	Krys Kuzminska	C	4 to 11	VC	201	30	Yes	Aylesbury Vale	3061	Yes - see website
All applicants could be offered a place					Before and After School Provision: Before & After School Club					
<b>Newtown Early Years &amp; Infant School, Berkhamstead Road, Chesham, Bucks HP5 3AT</b>										
Phone: 01494 783713 (01494 782989 - Early Years Dept.) Fax: 01494 783713 email: office@newtown.bucks.sch.uk web:	Julia Antrobus	I	4 to 7	C	181	60	Yes	Chiltern South Bucks	2021	
All offered under rule 2 (catchment), rule 3 (siblings) and some under rule 7 (distance) to 1.655 miles Linked to: Brushwood School										
<b>North Marston Church of England School, School Hill, North Marston, Buckingham, Bucks</b>					<b>MK18 3PE</b>					
Phone: 01296 670286 Fax: 01296 670286 email: office@northmarston.bucks.sch.uk web: www.northmarston.ik.org	Catherine Gouldstone	C	4 to 11	VC	97	15		Aylesbury Vale	3014	Yes - see website
All offered under rule 2 (catchment), rule 3 (siblings), and some under rule 4 (church)										
<b>Oak Green School, Oak Green, Aylesbury, Bucks HP21 8LJ</b>										
Phone: 01296 423895 Fax: 01296 431677 email: office@oakgreen.bucks.sch.uk web: www.oakgreen.bucks.sch.uk	Mrs Elaine Barry	C	4 to 11	C	390	60	Yes	Aylesbury Vale	2001	
All applicants could be offered a place					Before and After School Provision: Before & After School Club					
<b>Oakley Church of England Combined School, Worminghall Road, Oakley, Aylesbury, Bucks</b>					<b>HP18 9QY</b>					
Phone: 01844 238364 Fax: 01844 238364 email: office@oakley.bucks.sch.uk web: www.oakley.ik.org	Miss J E Garlick	C	4 to 11	VC	94	21		Aylesbury Vale	3100	Yes - see website
All applicants could be offered a place					Before and After School Provision: Before & After School Club					
<b>Oakridge School, Oakridge Road, High Wycombe, Bucks HP11 2PN</b>										
Phone: 01494 520341 Fax: 01494 520341 email: office@oakridge.bucks.sch.uk web: http://learning.oakridge.bucks.sch.uk	Margaret Jordan	C	4 to 11	C	358	50	Yes	Wycombe	2184	
All offered under rule 2 (catchment), rule 3 (siblings), and some under rule 7 (distance) to 0.671 miles.										

Contact	Headteacher/ Principal	School Type	Age Range	School Classification	Children attending in January 2011	Admission Number 2012	Early Years Provision	Area	DfE (DfES) No	Supplementary Form
---------	---------------------------	----------------	--------------	--------------------------	--	--------------------------	--------------------------	------	---------------------	-----------------------

**Our Lady's Catholic Primary School, Amersham Road, Chesham Bois, Amersham, Bucks**

**HP6 5PL**

Phone: 01494 726390 Fax: 01494 726795 email: admin@ourladys.bucks.sch.uk web: www.ourladys.bucks.sch.uk	Suzette Harris (Acting)	C	4 to 11	VA	230	30 +2		Chiltern South Bucks	3375	Yes - see website
All offered under rule 2 (catholic siblings in parish, with supporting letter) and some under rule 3 (catholic in parish) to a distance of 1.48 miles Junior All offered under rule 3 (catholic in parish) to a distance of 4.037										

**Overstone Combined School, Church Street, Wing, Leighton Buzzard, Beds, LU7 0NY**

Phone: 01296 688799 Fax: 01296 688816 email: admin@overstone-wing.bucks.sch.uk web: www.overstone-wing.bucks.sch.uk	Naima France	C	4 to 11	F	243	42	Yes	Aylesbury Vale	5201	
All applicants could be offered a place					Before and After School Provision: After school club					

**Padbury Church of England School, Main Road, Padbury, Buckingham, Bucks MK18 2AP**

Phone: 01280 813070 Fax: 01280 813070 email: office@padbury.bucks.sch.uk web: www.padburyschool.org.uk	Karen Duckworth	I	4 to 9	VC	20	15	Yes	Aylesbury Vale	3015	Yes - see website
All applicants could be offered a place Linked to: Winslow CE Combined School										

**Prestwood Infant School, Moat Lane, Prestwood, Great Missenden, Bucks HP16 9DF**

Phone: 01494 862263 Fax: 01494 890865 email: office@prestwoodinfants.org.uk web: http://learning.prestwood-inf.bucks.sch.uk/	Jean O'Keeffe	I	4 to 7	C	161	60	Yes	Chiltern South Bucks	2084	
All applicants could be offered a place Linked to: Prestwood Junior School										

**Prestwood Junior School, Clare Road, Prestwood, Great Missenden, Bucks HP16 0NR**

Phone: 01494 863687 Fax: 01494 863683 email: office@prestwood-jun.bucks.sch.uk web: www.prestwoodjunior.com	Matt Deans	J	7 to 11	C	210	60		Chiltern South Bucks	2204	
All applicants could be offered a place Linked to: Prestwood Infant School										

**Princes Risborough Primary School, Wellington Avenue, Princes Risborough, Bucks HP27 9HY**

Phone: 01844 345251 Fax: 01844 344917 email: office@princesrisboroughprimary.bucks.sch.uk web: www.princesrisboroughprimary.bucks.sch.uk	Paul New	C	4 to 11	C	235	50 + 8	Yes	Wycombe	2011	
All applicants could be offered a place. 7+ allocations - all applicants could be offered a place. Linked to: Great Kimble CE School					Before and After School Provision: Breakfast club					

Contact	Headteacher/ Principal	School Type	Age Range	School Classification	Children attending in January 2011	Admission Number 2012	Early Years Provision	Area	DfE (DfES) No	Supplementary Form
<b>Quinton Church of England Combined School, Lower Street, Quinton, Aylesbury, Bucks</b>					<b>HP22 4BJ</b>					
Phone: 01296 655242 Fax: 01296 655415 email: office@quinton.bucks.sch.uk	Gareth Mirams	C	4 to 11	VC	169	28	Yes	Aylesbury Vale	3074	Yes - see website
All offered under rule 2 (catchment), rule 3 (siblings), rule 7 (distance) to 6.75 miles										
<b>Radnage Church of England Infant School, City Road, Radnage, High Wycombe, Bucks</b>					<b>HP14 4DW</b>					
Phone: 01494 482167 Fax: email: office@radnage.bucks.sch.uk web: www.radnage.bucks.sch.uk	Elizabeth Ramm	I	4 to 7	VA	50	22		Wycombe	3339	
All applicants could be offered a place. Linked to: Stokenchurch Primary School										
<b>Robertswood School, Denham Lane, Chalfont St Peter, Bucks SL9 0EW</b>										
Phone: 01753 888327 Fax: 01753 880581 email: office@robertswood.org web: www.robertswood.org	Eddie Richings	C	4 to 11	C	447	58	Yes	Chiltern South Bucks	2292	
All applicants could be offered a place					Before and After School Provision: Before & After School Club					
<b>Roundwood Primary School, Junior site: Church Street, Gawcott, Buckingham, Bucks MK18 4HY</b>										
Phone: 01280 813066 Fax: 01280 813066 email: office@roundwood.bucks.sch.uk web: www.roundwood.bucks.sch.uk	Allan East	C	4 to 11	C	139	27	Yes	Aylesbury Vale	2038	
All applicants could be offered a place										
<b>Roundwood Primary School, Infant site: Main Street, Tingewick, Buckingham, Bucks</b>					<b>MK18 4NL</b>					
Phone: 01280 813066 Fax: 01280 813066										
<b>Seer Green Church of England Combined School, School Lane, Seer Green, Beaconsfield</b>					<b>HP9 2QJ</b>					
Phone: 01494 676344 Fax: 01494 730692 email: office@seergreen.bucks.sch.uk web: www.seergreen.bucks.sch.uk	Olwyn Davison- Oakley	C	4 to 11	VA	208	30 +2		Chiltern South Bucks	3326	Yes - see website
All offered under rules ii (ecclesiastical parish siblings) and some under rule iii (ecclesiastical parish) to a distance of 0.496 miles Junior: All offered under rule iii (ecclesiastical parish) to 0.647 miles										

Contact	Headteacher/ Principal	School Type	Age Range	School Classification	Children attending in January 2011	Admission Number 2012	Early Years Provision	Area	DfE (DfES) No	Supplementary Form
---------	---------------------------	----------------	--------------	--------------------------	--	--------------------------	--------------------------	------	---------------------	-----------------------

**Speen Church of England (VA) School, Flowers Bottom Lane, Speen, Princes Risborough,**

**Bucks HP27 0SX**

Phone: 01494 488321 Fax: 01494 488321 email: office@speen-cofe.bucks.sch.uk web: www.speen-cofe.bucks.sch.uk	Denise Nayna	I	4 to 7	VA	39	15		Wycombe	3340	Yes - see website
All applicants could be offered a place. Linked to: St John's CE Combined School										

**Spinfield School, Terrington Hill, Marlow, Bucks SL7 2RE**

Phone: 01628 473551 Fax: 01628 477652 email: office@spinfield.bucks.sch.uk web: www.spinfieldschool.ik.org	Susan Hartley	C	4 to 11	C	210	30		Wycombe	2255	
All offered under rule 2 (catchment), rule 3 (siblings), and some under rule 7 (distance) to 0.603 miles. Before and After School Provision: Before & After School Club										

**St Augustine's & St Bernard's Catholic School, Daws Hill Lane, High Wycombe, Bucks HP11 1PW**

Phone: 01494 522338 Fax: 01494 443098 email: office@staugustines.bucks.sch.uk web: www.staugustines.bucks.sch.uk	Nicola Holt	C	3 to 19	VA	413	60		Wycombe	3366	Yes - see website
All offered under rule 1a (baptised multiple birth), 1b (other baptised children with priest support from within the parish), and some under 1c (catholic with priest support) to a distance of 9.2 miles. Before and After School Provision: Before & After School Club										

**St Edward's Catholic Junior School, Hazell Avenue, Aylesbury, Bucks HP21 7JF**

Phone: 01296 424544 Fax: 01296 381509 email: office@stedwards.bucks.sch.uk web: www.stedwards.bucks.sch.uk	Anna Majcher	J	7 to 11	VA	238	65		Aylesbury Vale	3367	Yes - see website
All applicants could be offered a place. Linked to: St Joseph's Catholic Infant School.										

**St George's Church of England Infant School, White Lion Road Amersham, Bucks HP7 9HX**

Phone: 01494 762552 Fax: 01494 765615 email: office@st-georges.bucks.sch.uk web: www.stgeorgesamersham.org.uk	Toby Long	I	4 to 7	VC	121	45	Yes	Chiltern South Bucks	3033	Yes - see website
All offered under rule 2 (catchment), rule 3 (siblings), rule 4 (church) and some under rule 7 (distance) to 3.711 miles. Linked to: Woodside Junior School Before and After School Provision: Before & After School Club										

**St James & St John CE Primary School, Main Street, Chackmore, Buckingham, Bucks MK18 5JE**

Phone: 01280 812291 Fax: 01280 812291 email: office@stjamesjohn.bucks.sch.uk web: www.stjamesjohn.com	Gillian Pedder	C	4 to 11	VC	135	20	Yes	Aylesbury Vale	3008	Yes - see website
All applicants could be offered a place Before and After School Provision: Before & After School Club										

Contact	Headteacher/ Principal	School Type	Age Range	School Classification	Children attending in January 2011	Admission Number 2012	Early Years Provision	Area	DfE (DfES) No	Supplementary Form
<b>St John's Church of England Combined School, Main Road, Lacey Green, Princes Risborough,</b>					<b>Bucks HP27 OPL</b>					
Phone: 01844 343521 Fax: 01844 274043 email: office@stjohn.bucks.sch.uk web: www.stjohn.bucks.sch.uk	Gillian Grimsey	C	4 to 11	VA	254	30 + 15		Wycombe	3336	Yes - see website
All applicants could be offered a place. 7+ allocations: all applicants could be offered a place Linked to: Speen CE School										
<b>St Joseph's Catholic Infant School, Hazell Avenue, Aylesbury, Bucks HP21 7JF</b>										
Phone: 01296 484618 Fax: 01296 719748 email: office@stjosephsrcinfant.bucks.sch.uk web:	Angela Gavin	I	4 to 7	VA	200	60	Yes	Aylesbury Vale	3372	Yes - see website
All offered under rule C (catholic and some under D2 (christian non siblings) to 2.18 miles Linked to: St Edward's Catholic Junior School					Before and After School Provision: Before & After School Club					
<b>St Joseph's Catholic Primary School, Priory Road, Chalfont St Peter, Gerrards Cross, Bucks</b>					<b>SL9 8SB</b>					
Phone: 01753 887743 Fax: 01753 892971 email: office@st-josephsprimary.bucks.sch.uk web: www.st-josephsprimary.bucks.sch.uk	David Ryan	C	4 to 11	VA	410	60 + 4	Yes	Chiltern South Bucks	3371	Yes - see website
All applicants could be offered a place Junior: All applicants could be offered a place					Before and After School Provision: Before & After School Club					
<b>St Louis Catholic Primary School, Harris Court, Aylesbury, Bucks HP20 2XZ</b>										
Phone: 01296 488915 Fax: 01296 486754 email: office@stlouisrcc.bucks.sch.uk web: www.stlouisrcc.bucks.sch.uk	Margaret Louisy	C	4 to 11	VA	211	30	Yes	Aylesbury Vale	3376	Yes - see website
All offered under rule c (baptised catholic in parish), d (baptised catholic other parishes), e (other baptised catholics), f (baptised other christians with priest support), g (baptised other christians without priest support), h (unbaptised catholic & christians), i (other faith children)					Before and After School Provision: Breakfast Club					
<b>St Mary &amp; All Saints Church of England Primary School, Maxwell Road, Beaconsfield, Bucks</b>					<b>HP9 1RG</b>					
Phone: 01494 673762 Fax: 01494 674757 email: office@stmaryallsaints.bucks.sch.uk	Elaine Kilner	C	4 to 11	VA	208	30	Yes	Chiltern South Bucks	3328	Yes - see website
All offered under rule 2 (only catchment), and some under rule 3 (catchment, sibling, faith) to 1.39 miles					Before and After School Provision: Before & After School Club- private provider					

Contact	Headteacher/ Principal	School Type	Age Range	School Classification	Children attending in January 2011	Admission Number 2012	Early Years Provision	Area	DfE (DfES) No	Supplementary Form
---------	---------------------------	----------------	--------------	--------------------------	--	--------------------------	--------------------------	------	---------------------	-----------------------

**St Mary's CE Primary School, Amersham, School Lane, Amersham, Bucks HP7 0EL**

Phone: 01494 726032 Fax: 01494 726032 email: office@stmarysce.bucks.sch.uk web: www.stmarysce.bucks.sch.uk	Julie Hills	C	4 to 11	VA	332	45 + 6	Yes	Chiltern South Bucks	3320	Yes - see website
All offered under rules 2& 3 (catchment), 4 (siblings) and some under rule 5 (distance ) to 0.89 miles Junior All offered under rules 2 to 4 and some under rule 5 (distance)					Before and After School Provision: Before & After School Club					

**St Mary's Church of England School, Keen Close, Aylesbury, Bucks HP19 7WF**

Phone: 01296 482094 Fax: 01296 339609 email: office@st-marysaylesbury.bucks.sch.uk web: www.st-marysaylesbury.bucks.sch.uk	Pat Gurton	C	4 to 11	VC	383	60		Aylesbury Vale	3020	Yes - see website
Some offered under rule 2 (catchment siblings, catchment, church faith, and other catchment children to a distance of 0.255miles)										

**St Mary's Farnham Royal Church of England Primary School, Church Road, Farnham Royal Bucks SL2 3AW**

Phone: 01753 644471 Fax: 01753 644518 email: admin@farnhamroyal.bucks.sch.uk web: www.stmarysfarnhamroyal.ik.org	Mr Andy Tagg	C	4 to 11	VA	334	52	Yes	Chiltern South Bucks	3053	Yes - see website
All applicants could be offered a place										

**St Michael's Church of England Combined School, Chapel Square, Stewkley, Leighton Buzzard, Beds, LU7 0HA**

Phone: 01525 240248 Fax: 01525 240248 email: office@st-michaels.bucks.sch.uk web: www.st-michaels.bucks.sch.uk	Katherine Passmore	C	4 to 11	VC	195	30 + 10	Yes	Aylesbury Vale	3017	Yes - see website
All applicants could be offered a place. 7+ allocations -no places offered. Linked to: Drayton Parslow Village School										

**St Nicolas' Church of England Combined School, Rectory Road, Taplow, Maidenhead SL6 0ET**

Phone: 01628 603759 Fax: 01628 669754 email: office@st-nicolas.bucks.sch.uk web: www.stnicolastaplow.com	Lorraine Sutherland	C	4 to 11	VA	214	30 + 2		Chiltern South Bucks	3346	Yes - see website
All offered under rule ii (catchment), iii (siblings) iv(church at least 39 times per year ), rule v (church at least 12 but less than 39 times per year ),vi (church less than 12) and someunder rule vii (distance) to 14.069 miles Junior: Some offered under rule iii (siblings) to distance of 1.239 miles										

Contact	Headteacher/ Principal	School Type	Age Range	School Classification	Children attending in January 2011	Admission Number 2012	Early Years Provision	Area	DfE (DfES) No	Supplementary Form
<b>St Paul's Church of England Combined School, Stratford Drive, Wooburn, High Wycombe, Bucks</b>					<b>HP10 0QH</b>					
Phone: 01628 521553 Fax: 01628 522450 email: office@st-pauls.bucks.sch.uk web: www.st-pauls.bucks.sch.uk	Ruth Goddard	C	4 to 11	VA	263	30 + 2	Yes	Wycombe	3342	Yes - see website
All offered under rules 1, 2, (church & live in the ecclesiastical parish), 3 (catchment), and some under 4 (siblings) to a distance of 0.392 miles. 7+ allocations - All timely applicants could be offered a place.										
<b>St Peter's Catholic Primary School, Prospect Road, Marlow, Bucks SL7 2PJ</b>										
Phone: 01628 472116 Fax: 01628 488123 email: office@stpetersrc.bucks.sch.uk web: www.stpetersrc.bucks.sch.uk	Amanda McCluskey	C	4 to 11	VA	202	30 + 3		Wycombe	3361	Yes - see website
All applicants could be offered a place. 7+ allocations - all applicants could be offered a place.										
<b>St Peter's Church of England Combined School, Minniecroft Road, Burnham, Bucks SL1 7DE</b>										
Phone: 01628 602295 Fax: 01628 660726 email: office@st-peterscofe.bucks.sch.uk web: www.stpeterscofe.co.uk	Lesley Blount	C	4 to 11	VC	162	30 + 3	Yes	Chiltern South Bucks	3102	Yes - see website
All offered under rule 2 (catchment) and some under rule 3 (siblings) to 5.491 miles Junior: All applications could be offered					Before and After School Provision: Before & After School Club					
<b>Steeple Claydon School, Meadoway, Steeple Claydon, Buckingham, Bucks MK18 2PA</b>										
Phone: 01296 738132 Fax: 01296 738635 email: office@steepleclaydon.bucks.sch.uk web: www.steepleclaydon.bucks.sch.uk	Becky Ellers	C	4 to 11	C	124	24	Yes	Aylesbury Vale	2107	
All applicants could be offered a place Linked to: East Claydon Infant School										
<b>Stoke Mandeville Combined School, Lower Road, Stoke Mandeville, Aylesbury, Bucks HP22 5XA</b>										
Phone: 01296 612371 Fax: 01296 615038 email: office@stokemandeville.bucks.sch.uk web: http://learning.stokemandeville.bucks.sch.uk	Matt Ashmead	C	4 to 11	C	216	30		Aylesbury Vale	2108	
All timely applications under rule 2 (catchment), and some under rule 2 timely (siblings), to a distance of 2.117 miles										
<b>Stoke Poges School, The, Rogers Lane, Stoke Poges, Slough, Bucks SL2 4LN</b>										
Phone: 01753 643319 Fax: 01753 643431 email: office@stokepoges.bucks.sch.uk web: www.thestokepogesschool.uk.org	Malcolm Bridges	C	4 to 11	C	400	56		Chiltern South Bucks	2354	
All offered under rule 2 (catchment), rule 3 (siblings) and some under rule 7 (distance) to 1.587 miles										

Contact	Headteacher/ Principal	School Type	Age Range	School Classification	Children attending in January 2011	Admission Number 2012	Early Years Provision	Area	DfE (DfES) No	Supplementary Form
---------	---------------------------	----------------	--------------	--------------------------	--	--------------------------	--------------------------	------	---------------------	-----------------------

**Stokenchurch Primary School, George Road, Stokenchurch, High Wycombe, Bucks HP14 3RN**

Phone: 01494 482112 Fax: 01494 485854 email: office@stokenchurchprimary.bucks.sch.uk web: www.stokenchurchprimary.co.uk	Andrew White	C	4 to 11	C	520	60 + 30	Yes	Wycombe	2269	
All applicants could be offered a place. 7+ allocations -places offered up to Rule 3 (siblings & at a linked primary) to a distance of 7.073 miles. Linked to: Ibstone CE Infant School, Mary Towerton CE Infant School, Radnage CE Infant School					Before and After School Provision: After School Club					

**Stone Church of England Combined School, Oxford Road, Stone, Aylesbury, Bucks HP17 8PD**

Phone: 01296 748340 Fax: 01296 748483 email: office@stone.bucks.sch.uk web: www.stone.bucks.sch.uk	Claire Mirams	C	4 to 11	VC	175	30		Aylesbury Vale	3028	Yes - see website
All offered under rule 2 (catchment), rule 3 (siblings), and some under rule 7 (distance) to 1.503 miles										

**Swanbourne Church of England School, Winslow Road, Swanbourne, Milton Keynes, Bucks MK17 0SW**

Phone: 01296 720295 Fax: 01296 720295 email: office@swanbourne.bucks.sch.uk web: www.draytonparslow.bucks.sch.uk	Alexandra Owens (Acting)	J	7 to 11	VA	78	30		Aylesbury Vale	3305	Yes - see website
All applicants could be offered a place. Linked to: Mursley CE School, Drayton Parslow Village School										

**Thomas Harding Junior School, Fullers Hill, Chesham, Bucks HP5 1LR**

Phone: 01494 782211 Fax: 01494 786098 email: office@thomasharding.bucks.sch.uk web: thomasharding.org.uk	Glad Allen	J	7 to 11	C	206	60		Chiltern South Bucks	2205	
All applicants could be offered a place Linked to: Elmtree School										

**Thomas Hickman School, The, Belgrave Road, Aylesbury, Bucks HP19 9HP**

Phone: 01296 485683 Fax: 01296 392844 email: office@thomashickman.bucks.sch.uk	Andy George	C	4 to 11	C	380	60	Yes	Aylesbury Vale	2219	
All timely applicants offered under rule 2 (catchment), rule 3 timely (siblings) and some under rule 7 (distance) to 2.208 miles					Before and After School Provision: Breakfast Club					

**Thornborough Infant School, High Street, Thornborough, Buckingham, Bucks MK18 2DF**

Phone: 01280 812219 Fax: 01280 812219 email: office@thornborough.bucks.sch.uk	Brigid Howard	I	4 to 7	C	38	15	Yes	Aylesbury Vale	2113	
All applicants could be offered a place Linked to: Great Horwood CE Combined School										

Contact	Headteacher/ Principal	School Type	Age Range	School Classification	Children attending in January 2011	Admission Number 2012	Early Years Provision	Area	DfE (DfES) No	Supplementary Form
---------	---------------------------	----------------	--------------	--------------------------	--	--------------------------	--------------------------	------	---------------------	-----------------------

#### Tilehouse Combined School, Nightingale Way, Denham Green Bucks UB9 5JL

Phone: 01895 833369 Fax: 01895 835142 email: office@tilehouse.bucks.sch.uk web: www.tilehouse.bucks.sch.uk	Janice Freeman	C	4 to 11	C	119	30 + 15	Yes	Chiltern South Bucks	2180	
All applicants could be offered a place Junior All applicants could be offered Linked to: Denham Village Infant School					Before and After School Provision: Before & After School Club					

#### Turnfurlong Infant School, Turnfurlong Lane, Aylesbury, Bucks HP21 7PL

Phone: 01296 489265 email: office@turnfurlong-inf.bucks.sch.uk web: www.turnfurlong.inf.bucks.sch.uk	Jan Tyson	I	4 to 7	C	254	90		Aylesbury Vale	2289	
All offered under rule 2 (catchment), rule 3 (siblings), rule 7 (distance) to 1.066 miles Linked to: Turnfurlong Junior School					Before and After School Provision: Breakfast club					

#### Turnfurlong Junior School, Turnfurlong Lane, Aylesbury, Bucks HP21 7PL

Phone: 01296 489264 Fax: 01296 489264 email: office@tjs.org.uk web: www.tjs.org.uk	Miss Jo Erasmus Acting Head	J	7 to 11	C	350	90		Aylesbury Vale	2280	
Places offered up to Rule 6 (at a linked primary ) to a distance of 3.073 miles Linked to: Turnfurlong Infant School					Before and After School Provision: Breakfast club					

#### Twyford Church of England School, Church Street, Twyford, Buckingham, Bucks MK18 4EQ

Phone: 01296 730305 Fax: 01296 730305 email: office@twyford.bucks.sch.uk web: www.twyford.ik.org	Judith Foster	I	4 to 9	VC	73	15	Yes	Aylesbury Vale	3056	Yes - see website
All applicants could be offered a place Linked to: Grendon Underwood Combined School										

#### Tylers Green First School, School Road, Penn, High Wycombe, Bucks HP10 8EF

Phone: 01494 813201 Fax: 01494 818960 email: office.tylersgreenfirst@bucks.sch.uk web: www.tylersgreenfirst.ik.org	Janis Dieppe	I	4 to 7	C	180	60		Wycombe	2115	
All offered under rule 2 (catchment), rule 3 (siblings), and some under rule 7 (distance) to 1.538 miles. Linked to: Tylers Green Middle School										

#### Tylers Green Middle School, Cock Lane, Penn, High Wycombe, Bucks HP10 8DS

Phone: 01494 812465 Fax: 01494 812741 email: office@tylersgreenmiddle.bucks.sch.uk	Sue Smithin	J	7 to 11	C	240	60		Wycombe	2203	
Places offered up to Rule 6 (at a linked primary) to a distance of 3.828 miles. Linked to: Tylers Green First School										

Contact	Headteacher/ Principal	School Type	Age Range	School Classification	Children attending in January 2011	Admission Number 2012	Early Years Provision	Area	DfE (DfES) No	Supplementary Form
---------	---------------------------	----------------	--------------	--------------------------	--	--------------------------	--------------------------	------	---------------------	-----------------------

**Waddesdon Village Primary School, School Lane, Waddesdon, Aylesbury, Bucks HP18 0LQ**

Phone: 01296 651237 Fax: 01296 655959 email: office@waddesdon.bucks.sch.uk web: www.waddesdonprimary.com	Alison Vicentijevic	C	4 to 11	C	198	26 + 6	Yes	Aylesbury Vale	2317	
All offered under rule 2 (catchment), rule 3 (siblings), and some under rule 7 (distance) to 4.675 miles. 7+ allocations - all applicants could be offered a place. Linked to: Westcott CE School										

**Waterside Combined School, Black Horse Avenue, Chesham, Bucks HP5 1QU**

Phone: 01494 786608 Fax: 01494 773287 email: office@waterside.bucks.sch.uk web: www.watersideschool.org.uk	Gareth Drawmer	C	4 to 11	C	131	15	Yes	Chiltern South Bucks	2258	
All applicants could be offered a place										

**Wendover Church of England Junior School, Wharf Road, Wendover, Aylesbury, Bucks**

**HP22 6HF**

Phone: 01296 696822 Fax: 01296 696549 email: office@wendover.bucks.sch.uk web: www.wendover.bucks.sch.uk	Mr Derek Hayward	J	7 to 11	VC	349	90		Aylesbury Vale	3029	Yes - see website
All applicants could be offered a place. Linked to: John Hampden School										

**West Wycombe Combined School, Church Lane, West Wycombe, High Wycombe, Bucks**

**HP14 3AH**

Phone: 01494 523318 Fax: 01494 523620 email: office@westwycombe.bucks.sch.uk web: www.westwycombecs.uk.org	Alison Cobb	C	4 to 11	C	205	30		Wycombe	2055	
All offered under rule 2 (catchment), rule 3 (siblings), and some under rule 7 (distance) to 2.293 miles.										

**Westcott Church of England School, High Street, Westcott, Aylesbury, Bucks HP18 0PH**

Phone: 01296 651360 Fax: 01296 651360 email: office@westcott.bucks.sch.uk web: www.westcott.bucks.sch.uk	Barry Grace	I	4 to 7	VC	27	10	Yes	Aylesbury Vale	3065	Yes - see website
All applicants could be offered a place Linked to: Waddesdon Village Primary School										

**Weston Turville Church of England School, School Approach, Main Street, Weston Turville,**

**Bucks HP22 5RW**

Phone: 01296 613436 Fax: 01296 614139 email: office@westonturville.bucks.sch.uk web: www.westonturville.bucks.sch.uk	Karen Brooks	C	4 to 11	VA	208	30		Aylesbury Vale	3030	Yes - see website
All offered under rule 2 (catchment and church), and some under rule 3 (catchment) to 1.87 miles										

Contact	Headteacher/ Principal	School Type	Age Range	School Classification	Children attending in January 2011	Admission Number 2012	Early Years Provision	Area	DfE (DfES) No	Supplementary Form
---------	---------------------------	----------------	--------------	--------------------------	--	--------------------------	--------------------------	------	---------------------	-----------------------

**Whaddon Church of England School, Stock Lane, Whaddon, Milton Keynes, Bucks MK17 0LS**

Phone: 01908 501719 email: office@whaddon.bucks.sch.uk web: www.whaddon.bucks.sch.uk	Diana Travis	I	4 to 8	VC	31	18		Aylesbury Vale	3018	Yes - see website
All applicants could be offered a place Linked to: Great Horwood CE Combined School					Before and After School Provision: After School Club					

**Whitchurch Combined School, North Marston Lane, Whitchurch, Aylesbury, Bucks HP22 4JG**

Phone: 01296 641418 Fax: 01296 640632 email: office@whitchurch.bucks.sch.uk web: www.whitchurchcomb.ik.org	Jackie Crook	C	4 to 11	C	210	30		Aylesbury Vale	2251	
All offered under rule 2 (catchment), rule 3 (siblings), and rule 7 (distance) to 5.412 miles										

**Widmer End Combined School, Estcourt Drive, Widmer End, High Wycombe, Bucks HP15 6AH**

Phone: 01494 714371 Fax: 01296 640632 email: office@widmerend.bucks.sch.uk web: www.widmerend.bucks.sch.uk	Roz Burch	C	4 to 11	C	199	30	Yes	Wycombe	2254	
All applicants could be offered a place										

**William Harding Combined School, Hazelhurst Drive, Aylesbury, Bucks HP21 9TJ**

Phone: 01296 421733 Fax: 01296 436274 email: infantoffice@whcs.bucks.sch.uk web: www.williamharding.ik.org	Marc Ackland	C	4 to 11	C	637	90	Yes	Aylesbury Vale	2288	
All timely applicants offered under rule 2(cathment), rule 3 (siblings) and some under rule 7 (distance) to 3.327 miles					Before and After School Provision: Before & After Schools Club					

**Wingrave Church of England Combined School, Twelve Leys, Wingrave, Aylesbury, Bucks HP22 4QG**

Phone: 01296 681436 Fax: 01296 681764 email: office@wingrave.bucks.sch.uk web: www.wingrave.bucks.sch.uk	Val Britnall	C	4 to 11	VC	107	30		Aylesbury Vale	3031	Yes - see website
All applicants could be offered a place										

Contact	Headteacher/ Principal	School Type	Age Range	School Classification	Children attending in January 2011	Admission Number 2012	Early Years Provision	Area	DfE (DfES) No	Supplementary Form
---------	---------------------------	----------------	--------------	--------------------------	--	--------------------------	--------------------------	------	---------------------	-----------------------

**Winslow Church of England Combined School, Lowndes Way, Winslow, Buckingham, Bucks**

**MK18 3EN**

Phone: 01296 712296 Fax: 01296 712444 email: office@winslow.bucks.sch.uk web: www.winslow.bucks.sch.uk	Simon Rose	C	4 to 11	VC	456	60 + 30	Yes	Aylesbury Vale	3101	Yes - see website
All timely applicants could be offered under rule 2 (catchment), rule 3 (siblings) and some under rule 7 (distance) to 11.034 miles 7+ allocations - all applicants could be offered a place. Linked to: Mursley CE School, Padbury CE School, East Claydon School.					Before and After School Provision: Before & After Schools Club					

**Woodside Junior School, Mitchell Walk, Amersham, Bucks HP6 6NW**

Phone: 01494 725897 Fax: 01494 723897 email: office@woodside.bucks.sch.uk web: http://www.woodsideschool.com	Sue Harratt	J	7 to 11	C	95	30		Chiltern South Bucks	2143	
Places were offered up to Rule 6 (attendance at linked infant school) to 5.151 miles. Linked to: St George's CE Infant School					Before and After School Provision: Breakfast Club					

**Bowerdean Nursery School, Gordon Road, High Wycombe, Bucks HP13 6HR**

Phone: 01494 521941 email: office.bowerdeannurs@easymail.rmplc.co.uk web: www.bowerdean.bucks.sch.uk	Tara Wright	N	3 to 5	C	91 P/T		Yes		1005	
					Before and After School Provision: Before & After School Club					

**Henry Allen Nursery School, Mitchell Walk, Amersham, Bucks HP6 6NW**

Phone: 01494 726257 Fax: 01494 727845 email: office@henryallen.bucks.sch.uk web: www.henryallen.bucks.sch.uk	Jamie Shaw	N	3 to 5	C			Yes		1000	

# Maps

The maps that follow are to give you an idea of where the primary schools are in Buckinghamshire.

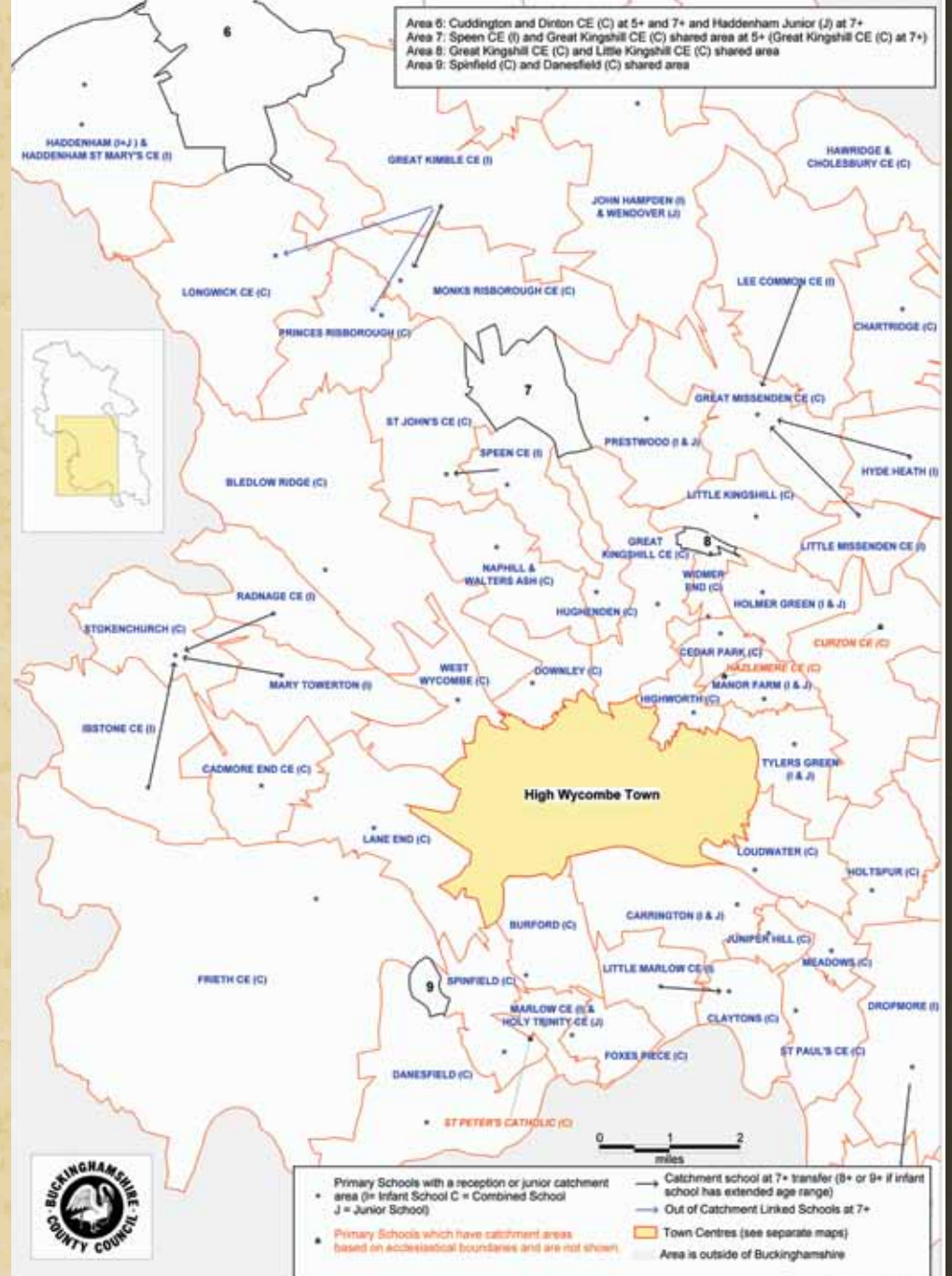
You can see detailed maps of each of the catchment areas for Buckinghamshire primary schools on our website: [www.buckscc.gov.uk/schooladmission](http://www.buckscc.gov.uk/schooladmission)

On these pages you can also find maps of the whole county, showing the catchment areas for all of the schools.

Remember to look at our Catchment Area Checker too, which will give you the catchment area schools for your property [www.buckscc.gov.uk/catchmentchecker](http://www.buckscc.gov.uk/catchmentchecker)

MAPS

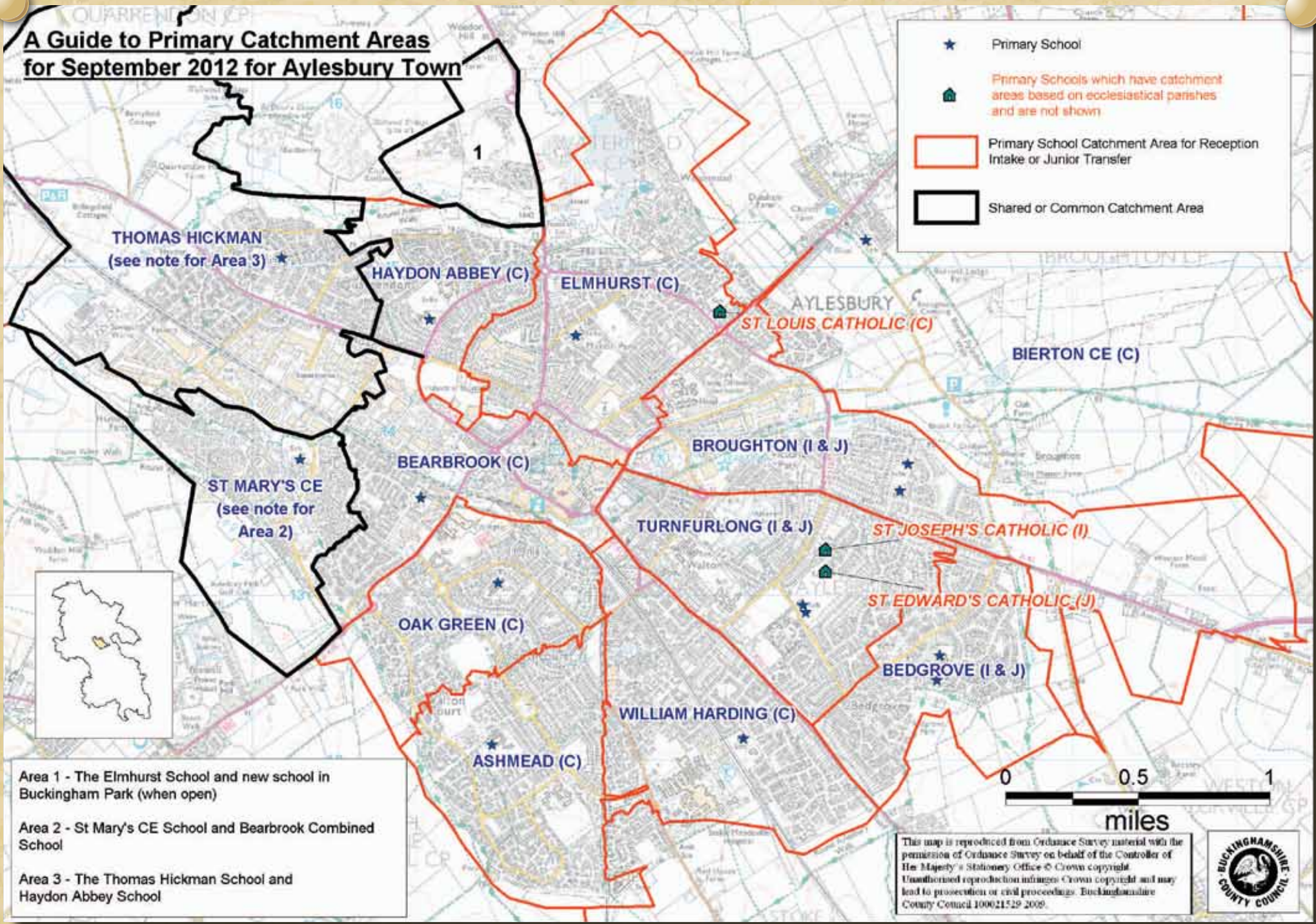
## A Guide to Primary School Catchment Areas in Wycombe District for September 2012



MAPS

# A Guide to Primary Catchment Areas for September 2012 for Aylesbury Town

- ★ Primary School
- 🏠 Primary Schools which have catchment areas based on ecclesiastical parishes and are not shown
- 📐 Primary School Catchment Area for Reception Intake or Junior Transfer
- 🖱️ Shared or Common Catchment Area



**Area 1 -** The Elmhurst School and new school in Buckingham Park (when open)

**Area 2 -** St Mary's CE School and Bearbrook Combined School

**Area 3 -** The Thomas Hickman School and Haydon Abbey School

This map is reproduced from Ordnance Survey material with the permission of Ordnance Survey on behalf of the Controller of Her Majesty's Stationery Office © Crown copyright. Unauthorised reproduction infringes Crown copyright and may lead to prosecution or civil proceedings. Buckinghamshire County Council 100021529 2009.

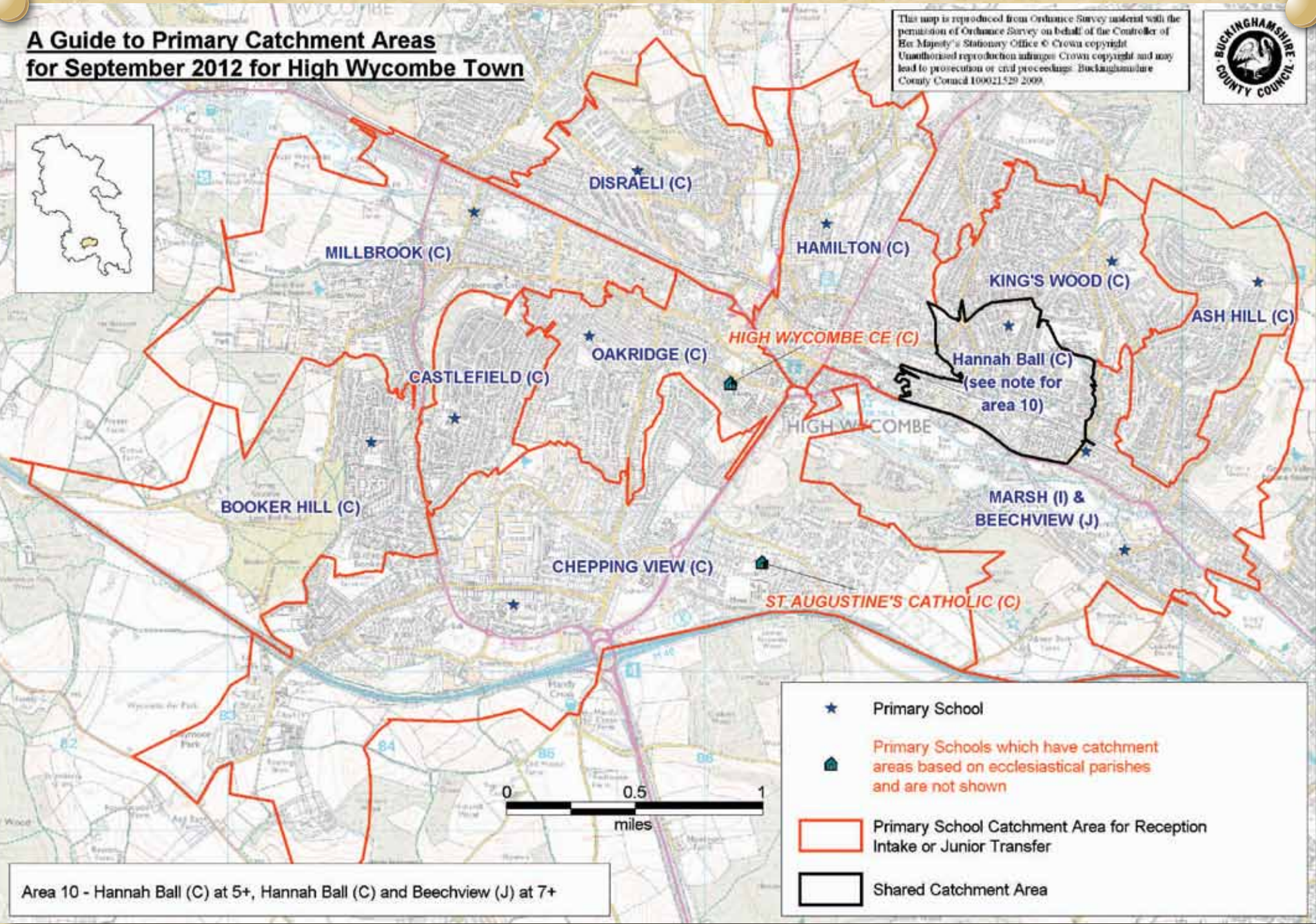


MAPS

MAPS

# A Guide to Primary Catchment Areas for September 2012 for High Wycombe Town

This map is reproduced from Ordnance Survey material with the permission of Ordnance Survey on behalf of the Controller of Her Majesty's Stationary Office © Crown copyright. Unauthorised reproduction infringes Crown copyright and may lead to prosecution or civil proceedings. Buckinghamshire County Council 100021529 2009.



Area 10 - Hannah Ball (C) at 5+, Hannah Ball (C) and Beechview (J) at 7+

- ★ Primary School
- 🏠 Primary Schools which have catchment areas based on ecclesiastical parishes and are not shown
- 🟠 Primary School Catchment Area for Reception Intake or Junior Transfer
- ⬜ Shared Catchment Area

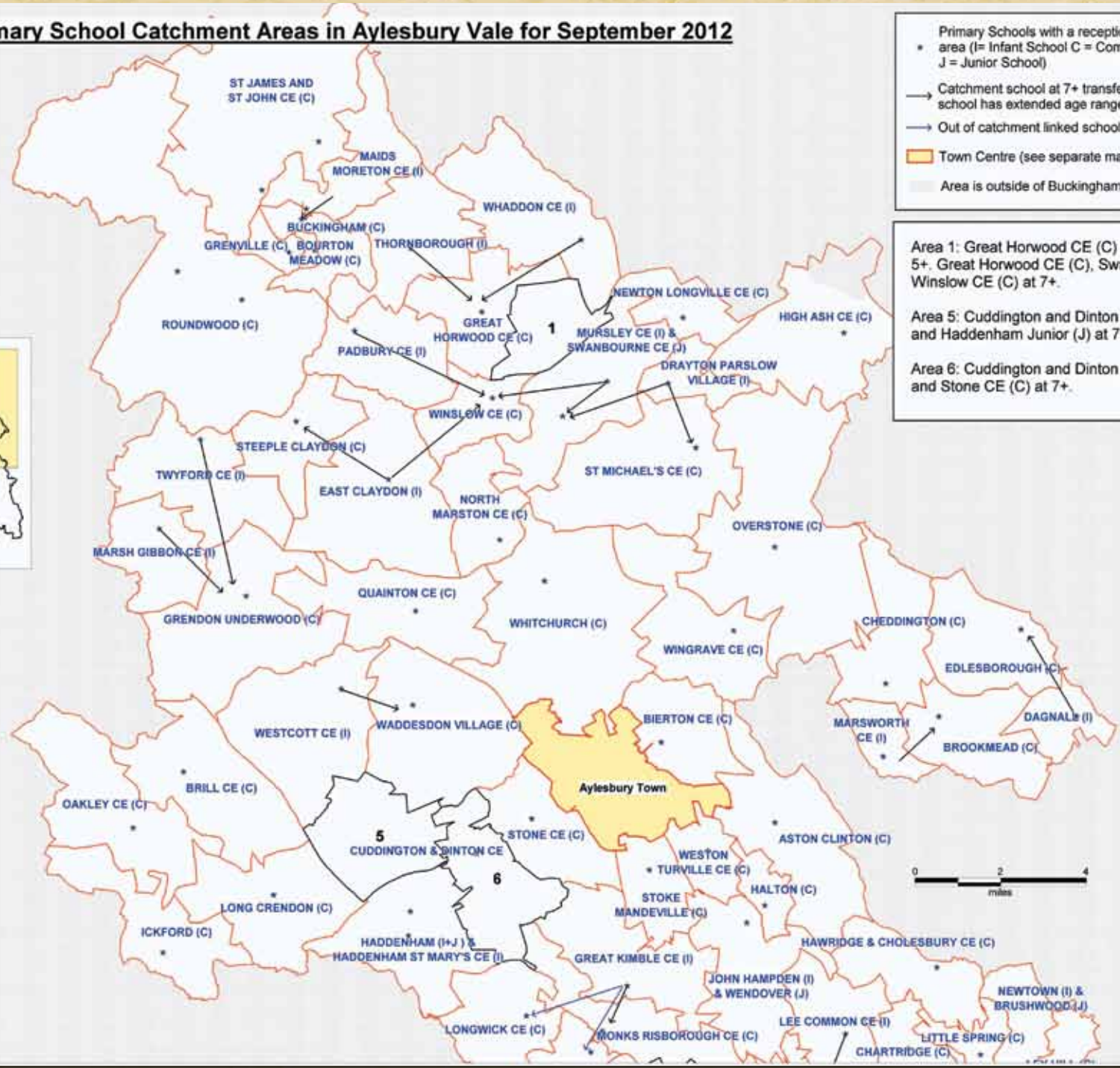
MAPS

MAPS

# A Guide to Primary School Catchment Areas in Aylesbury Vale for September 2012

- Primary Schools with a reception or junior catchment area (I= Infant School C = Combined School J = Junior School)
- Catchment school at 7+ transfer (8+ or 9+ if infant school has extended age range)
- Out of catchment linked schools at 7+
- Town Centre (see separate map)
- Area is outside of Buckinghamshire

- Area 1: Great Horwood CE (C) and Mursley CE (I) at 5+. Great Horwood CE (C), Swanbourne (J) and Winslow CE (C) at 7+.
- Area 5: Cuddington and Dinton CE (C) at 5+ and 7+, and Haddenham Junior (J) at 7+.
- Area 6: Cuddington and Dinton CE (C) at 5+ and 7+, and Stone CE (C) at 7+.



MAPS

MAPS

**A Guide to Primary School Catchment Areas in Chiltern & South Bucks for September 2012**



Primary Schools with a reception or junior catchment area (I= Infant School C = Combined School J = Junior School)  
 Primary Schools which have catchment areas based on ecclesiastical boundaries and are not shown.  
 Catchment school at 7+ transfer (I+ or 9+ if infant school has extended age range)  
 Out of Catchment Linked schools at 7+  
 Town Centres (see separate maps)  
 Area is outside of Buckinghamshire

Area 7: Speen CE (I) and Great Kingshill CE (C) shared area at 5+ (Great Kingshill CE (C) at 7+)  
 Area 8: Great Kingshill CE (C) and Little Kingshill CE (C) shared area  
 St Mary's and All Saints CE Combined School also admits children from the ecclesiastical parishes of Penn and Beaconsfield

## Admission rules

Each school has admission rules, which are used to decide who can be offered places. It is important that you understand how these rules are used so that you can see which rule your application would be considered under. Each school has an Admission Number (AN) which is the number of places we can offer.

If you have questions about the admission rules for Voluntary-Aided schools, Foundation schools or Academies you should contact the school and they will explain how their rules work. They will post you a copy of their rules if you do not have access the internet. You should also contact schools in other areas if you would like them to explain their admission rules.

The following rules relate to children starting Reception in September 2012. If you are applying In-Year for a place at a primary school the rules will be those for September 2011 admission. You can see them on our website: [www.buckscc.gov.uk/schooladmission](http://www.buckscc.gov.uk/schooladmission)

### Admission rules for Community and Voluntary-Controlled schools – for September 2012

Once places have been allocated to children with a Statement of Special Educational Needs, the remaining places will be allocated in the following order:

- Rule 1** Children in care.
- Rule 2** Children living within the catchment area of the school.
- Rule 3** For the main point of entry: Siblings of children who are attending the school or a 'linked primary' school in Year R- Year 5 at the time the allocations are made, and are expected to be on the school roll or linked school roll at the time of the proposed admission, or who have already been offered a place to start in the current academic year at the school or a 'linked primary' school.

MAPS

For immediate in year admission after the normal point of entry; Siblings of children who are in Year R to Year 6 at the time of admission to the school.

**Rule 4** (For voluntary-controlled schools only) - Children whose parents have expressed a preference for a Church of England school supported by evidence that at least one parent has been a regular worshipper (an average of at least twice per month) at a church that is affiliated to or represented at 'Churches Together in England' or the 'Evangelical Alliance'. Attendance must have been for at least one year prior to your application. You should ask your priest or minister to complete a 'supplementary form' as evidence (available at [www.buckscc.gov.uk/schooladmission](http://www.buckscc.gov.uk/schooladmission)).

**Rule 5** Children who have exceptional medical or social needs, which can only be met at that school, supported by written evidence from an appropriate professional person.

**Rule 6** Children attending a primary school linked to the school named in the list of 'linked primary' schools at the time allocations are made. (See the schools list for information on linked schools).

**Rule 7** Once the above rules have been applied, then any further places will be offered in distance order, using the distance between the family's Normal Home Address and the school's nearest entrance gate, offering the closest first. We use the Shortest Appropriate Route.

Where a school can take some, but not all, of the children who qualify under one of these rules, we will give priority to children by taking account of the next rule (or rules) in the numbered list to decide who has priority for places. For example, places are offered to catchment siblings before children living in the catchment area without siblings. In each case, distance is used to prioritise which children should be offered places.

If it still not possible to decide between two applicants who are equidistant then in all cases, including flats and apartments, where addresses are equidistant a random allocation will be made.

## Admission rules for Community and Voluntary-Controlled schools – the terms used

**Sibling** A sibling is a brother or sister – for admission purposes, we mean one of two or more individuals who have one or more parents in common, or any other child (including an adopted child) who permanently lives at the same address and for whom the parent also has parental responsibility.

For all schools, remember to tell us on your application if you have another child already at one of your preferred schools or at a school linked to your preferred schools. There is a specific place for you to do this on your application. If you have more than one child already at the school, please list the younger child. We always check the facts with the school so please make it clear if your child has a different surname.

We will only consider a pupil in a primary school as a sibling if they are at the school, or a linked school in Reception (Foundation 2) to Year 5 at the time the allocations are made (March 2012), or who have already been offered a place to start in the current academic year at the school or a 'linked primary' school. The child must also be expected to still be at the school or linked school at the time the younger child would start.

When we are allocating places, if we have one place left and the next child on the list is a twin, triplet or other multiple birth groups, we will do the following:

For admission to a class which is covered by the infant class size legislation, only one child may be admitted. A process of random allocation will be followed by the Local Authority to decide which child should be offered the place.

For admission to a class where infant class size legislation does not apply both twins (or all the siblings in the case of multiple births) would be admitted.

Check how other schools manage siblings and multiple births by looking at their admission rules.

**Exceptional medical or social applications** If you would like your application considered under this rule, you will need to have very strong reasons for your child attending a particular school.

You will need to tell us that you would like us to look at your application under this rule and send us some supporting evidence. This supporting evidence should be from an independent professional person (this might be a doctor, health visitor or Education Welfare Officer, for example) who knows about your

situation and supports your case. It must clearly show why the school is the most suitable for your child and what difficulties there would be if your child went to a different school.

We will not collect information for you, so make sure you include all the evidence with your application that you would like us to look at to make our decision. Send in the evidence to us via email if you are applying online ([admissions@buckscc.gov.uk](mailto:admissions@buckscc.gov.uk)) or post it to us if you are applying on a paper form, marking clearly your child's name, date of birth and which school the documents relate to.

Educational professionals will decide which children can be considered under this rule before we make any allocations.

**Shortest Appropriate Route** The Shortest Appropriate Route is a measurement between a school and your address. It is measured by computer, using our Geographical Information System. We use a database which is made up of the Ordnance Survey 'Integrated Transport Network' (ITN) data as at 11 November 2011 and a database of footpaths, entered on our system before 11 November 2011. Footpaths have to be a proper made up surface, like tarmac or concrete.

The route will start at the point on the network that is closest to the centre of the property (taken from the Ordnance Survey Address Point file) and will end at the nearest school gate. The measurement is taken along the centre of the road.

The measurement is used to help us apply the admission rules so we know which children can be offered places. We don't expect that this is necessarily the route your child would take to school or that it is a 'safe walking route'. We use the same method to measure every child's distance.

If you think that your child's Shortest Appropriate Route might include footpaths or roads which may not already be included on our database, you must check this with us before 11 November 2011. It is always best to check if a footpath is included so that we can investigate for you. You can see the footpaths that are currently on our database by going to our website –

[www.buckscc.gov.uk/schooladmission](http://www.buckscc.gov.uk/schooladmission)

Look at each school's admission rules to see in what situations distance from home to school is used.

### Admission rules for Buckinghamshire voluntary-aided, foundation and academy primary schools

Some Buckinghamshire primary schools have their own admission rules and you can see a copy by visiting the school's website or calling them for a copy. You can also find the rules in summary on our website –

[www.buckscc.gov.uk/schooladmission](http://www.buckscc.gov.uk/schooladmission)

Most voluntary-aided, foundation or academy schools ask you to fill in a Supplementary Form to help them gather extra information about your child. This will help them decide where they would come in the admission rules. All of the catholic primary schools use the same form which is on our website: [www.buckscc.gov.uk/schooladmission](http://www.buckscc.gov.uk/schooladmission) for the voluntary-aided and academy schools you can download a form from the website or ring the school and ask them to send you a copy.

### Admission rules for schools in other areas

If you are interested in a school located in another LA area, you should contact the LA or school direct for more information about their admission rules.

## Key

### School Classification

A	Academy
C	Community
F	Foundation
VA	Voluntary-Aided
VC	Voluntary-Controlled

### Age Range

4 – 7

### School Type

C	Combined School
I	Infant School
J	Junior School

### Children Attending in January 2011

This is the number of children on the roll of the school in January 2011

### Admission Number 2012

This is the number of children the school will admit into the Reception (Foundation 2) class for September 2012, or for a Junior school the number of children the school will admit into Year 3 in September 2012.

A few combined schools admit children into Reception and Year 3 so they will have two admissions numbers for example Chesham Bois School admit 30 children into the Reception (Foundation 2) and 2 children into Year 3. This is why their admission number is 30 + 2.

## Notes

# Notes

