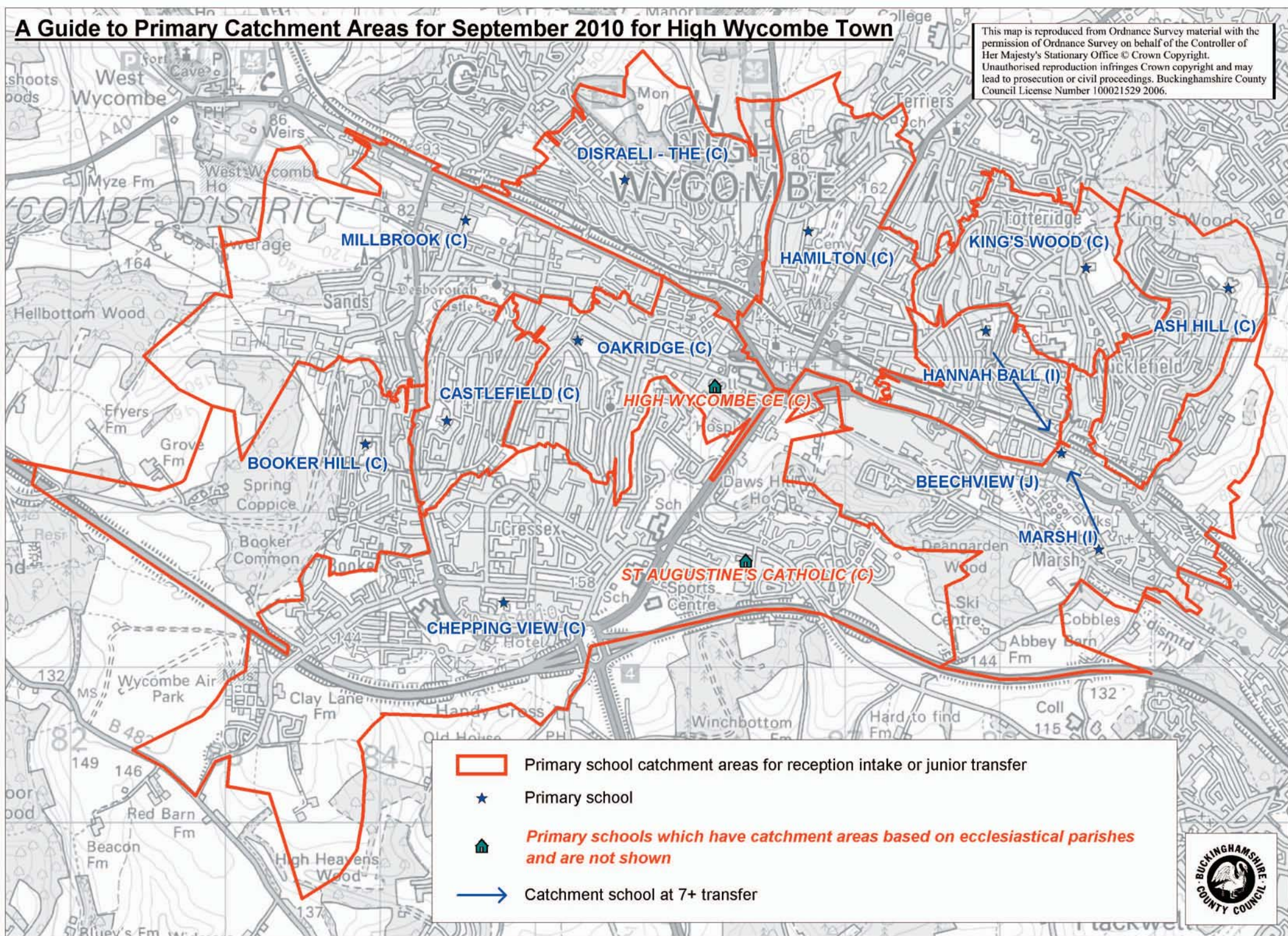






A Guide to Primary Catchment Areas for September 2010 for High Wycombe Town

This map is reproduced from Ordnance Survey material with the permission of Ordnance Survey on behalf of the Controller of Her Majesty's Stationary Office © Crown Copyright. Unauthorised reproduction infringes Crown copyright and may lead to prosecution or civil proceedings. Buckinghamshire County Council License Number 100021529 2006.



-  Primary school catchment areas for reception intake or junior transfer
-  Primary school
-  Primary schools which have catchment areas based on ecclesiastical parishes and are not shown
-  Catchment school at 7+ transfer

