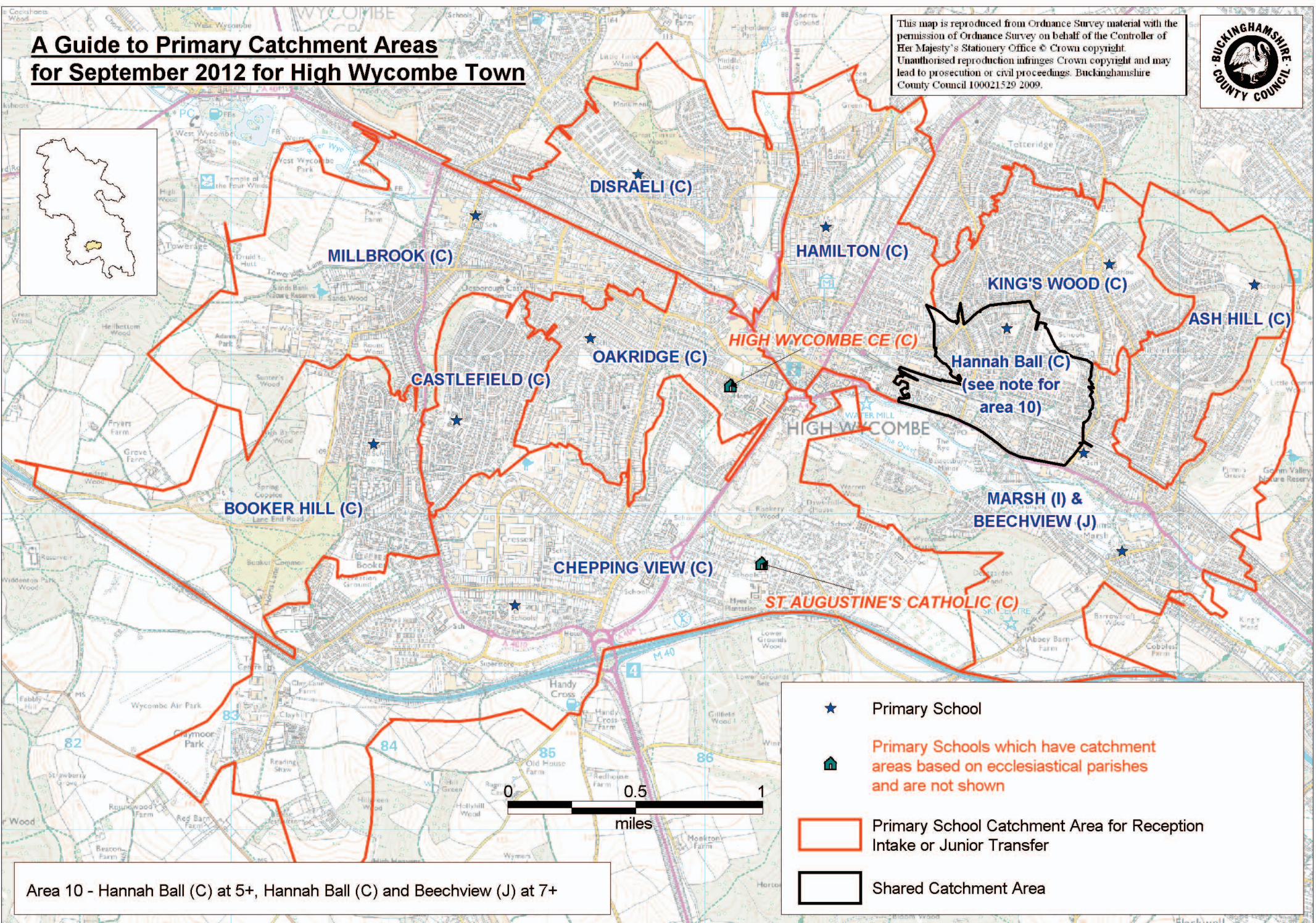
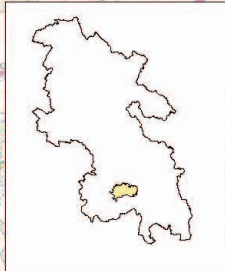
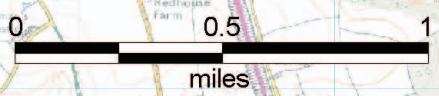


A Guide to Primary Catchment Areas for September 2012 for High Wycombe Town

This map is reproduced from Ordnance Survey material with the permission of Ordnance Survey on behalf of the Controller of Her Majesty's Stationary Office © Crown copyright. Unauthorised reproduction infringes Crown copyright and may lead to prosecution or civil proceedings. Buckinghamshire County Council 100021529 2009.



- ★ Primary School
- 🏠 Primary Schools which have catchment areas based on ecclesiastical parishes and are not shown
- 🟠 Primary School Catchment Area for Reception Intake or Junior Transfer
- 🟤 Shared Catchment Area



Area 10 - Hannah Ball (C) at 5+, Hannah Ball (C) and Beechview (J) at 7+