

Visitor Information

Studley Green is a village with no toilets or shops. There are two pubs and a coffee shop where you can get refreshments/use toilets on the walks. Pubs serve food lunchtimes (12-2) and evenings (after 6).

Garden Centre, Studley Green (01494 485965).
Coffee shop open seven days 10.30 am – 4pm.

Three Horse Shoes Pub, Radnage (01494 483273).
Open lunchtimes & eves.

Dashwood Arms, Piddington (01494 881330).
Open lunchtimes & eves.

For details of places to stay, visitor attractions or other Chiltern walks and rides contact Wycombe Tourist Information Centre 01494 421892 or www.visitbuckinghamshire.org

How to get to the start




You can start the walks from the garden centre on the A40 in Studley Green, between West Wycombe and Stokenchurch, Bucks. You can also start the walks from the pubs in Radnage or Piddington.

By bus: There is a regular 7-day service between High Wycombe and Stokenchurch which calls at Studley Green. Call Traveline 0870 6082608 or www.buckscc.gov.uk for times.

By cycle: There is cycle parking at the Three Horseshoes pub in Radnage.

Parking: You can park at the garden centre, but note the car park is closed after 5pm. If the garden centre car park is full or closed you can use the car park for the community centre across the road in Studley Green. You can also park at one of the pubs if you buy food or drink, but please check with staff before leaving your car.

This is one of a series of walks in the Chilterns Area of Outstanding Natural Beauty. It follows public rights of way, most of which are waymarked as follows:

-  Footpaths (walkers only)
-  Bridleways (horseriders, cyclists and walkers)
-  Byways (open to all traffic)

Please be considerate in the countryside:

- keep to public rights of way, and leave farm gates as you find them.
- please keep dogs under close control.

If you have enjoyed this walk there are many other wonderful walks in the Chilterns area, call 01844 271300 or www.chilternsaonb.org; The Ridgeway and Thames Path National Trails www.nationaltrails.gov.uk; walks in Buckinghamshire www.buckscc.gov.uk; or buy Ordnance Survey Explorer Map 171 and make your own walk www.ordsvy.gov.uk

The Chiltern Hills were designated as an Area of Outstanding Natural Beauty (AONB) in 1965. This is in recognition that the Chilterns countryside is amongst the finest in England and Wales. The Chilterns Conservation Board is the body charged with protecting the AONB. www.chilternsaonb.org.

If you, or a member of your community would like this leaflet produced in another language or format (large print or audio cassette), please contact the Chilterns Conservation Board 01844 271300.

This leaflet has been produced by © Chilterns Conservation Board, 2004, with the support of:



www.countryside.gov.uk



www.chilternsociety.org.uk



www.buckscc.gov.uk

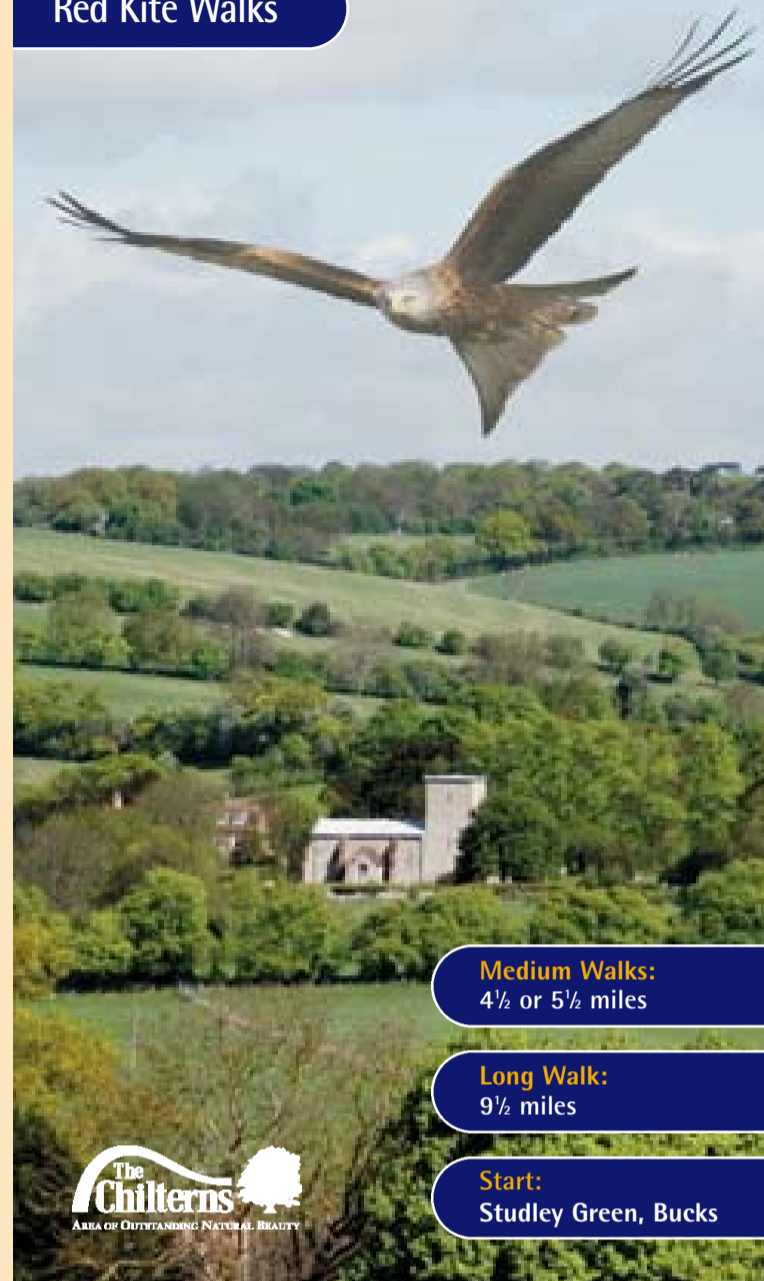


www.wycombe.gov.uk

Photographs kindly provided by © Chilterns Conservation Board, Gerry Whitlow, John Morris, Mike Fox, Tina Stallard/Countryside Agency and Jim Asher/Butterfly Conservation

Chilterns Country

Red Kite Walks



Medium Walks:
4½ or 5½ miles

Long Walk:
9½ miles

Start:
Studley Green, Bucks

About the walks

These circular walks pass through beautiful Chiltern valleys with panoramic views, ancient beech woods and rolling farmland.

There is a choice of walks depending on how far you want to go or how much time you have. The Piddington walk has no stiles or kissing gates and in dry weather is suitable for all terrain pushchairs.

You can start, break or finish your walk with a tasty meal or refreshing drink.

This is close to the place where red kites were first re-introduced and you will be very unlucky if you don't see several of these wonderful birds.

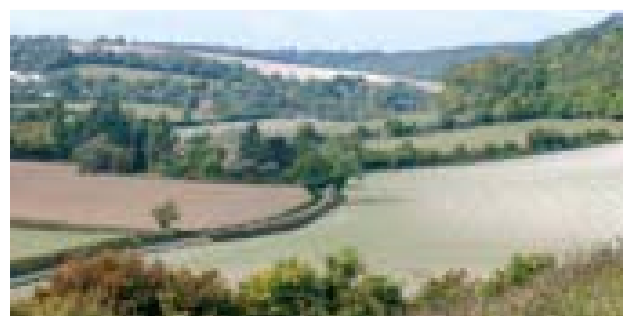
Walking gets you fit and keeps you healthy!!

Features of interest:

(see numbers on map)



1. The **Church of St Mary the Virgin** dates from the 13th century and still has some of the original wall paintings. In the 1650's religious fanatics covered the paintings in whitewash and they were only revealed during 20th century restoration.



2. **Bottom Wood** is owned by the Chiltern Society and managed by volunteers as a nature reserve, helped by the Chiltern Woodlands Project. This ancient wood contains a wide range of trees, including many wild cherries and in early May there are beautiful displays of **bluebells**. The old well in the wood is now capped in concrete for safety but once provided water to the local villages during a drought in the 1920's. There are also several old sawpits in the valley bottom where timber used to be cut.



3. The **Wycliffe Centre** helps UK churches engage in the work of Bible translation. It is named after John Wycliffe who, in the late 1300's, became the first person to translate the Bible into English. He was an early church reformist and 44 years after he died the Pope ordered his bones exhumed and burned. www.wycliffe.org.uk.

4. **Fillingdon Farm**. A local art dealer holds exhibitions of African art here several times a year. www.fillingdon.com or 01494 882684.

Red Kites: These magnificent birds of prey were re-introduced to the Chilterns in the early 1990's by English Nature and the RSPB. Human persecution had led to their extinction in England by the end of the 19th century; in fact red kites last bred in this area in around 1830. Now, around 200 pairs are breeding in the Chilterns and this is one of the best places to see them gliding overhead.

Red kites have a wingspan of 1½ m and have a forked tail. Listen out for their high pitched mewling calls "weeoo – wee – wee – wee". They are mainly scavengers, picking up carrion from the roads and surrounding countryside, but will catch small mammals, insects and worms. Sometimes teddy bears are found in their nests, presumably mistaken for dead animals!



Between July and September you might notice the kites have gaps in their wings and tails and look rather tatty. They are moulting, and growing new feathers, something they do every year. Don't be surprised if they are less active than normal during these months.

For more information about red kites visit www.chilternsaonb.org or 01844 271 306.



Piddington Walk

Distance: 4½ miles, allow 2½ to 3 hours

Access Information: No stiles, kissing gates or steps. Paths muddy in places after wet weather. Mainly gentle slopes with one steeper uphill slope for 50m. In dry weather it is suitable for all terrain pushchairs.

- From the Garden Centre, cross the main road and turn right towards West Wycombe. In 300m turn left through the gate of a house called Nutfield and go down the footpath. (If you arrive by bus, cross the road and turn left, the path is 50m in the direction of Stokenchurch).
- Where the footpath forks, bear left and carry on down the path between a hedge and a fence. Turn left when you reach the road and in 10 metres turn right still on a tarmac road.
- After 100m the tarmac surface ends but keep straight on and go through the left metal gate. At the end of the path go through the gate into Bottom Wood. Turn right onto the bridleway with the information board on your left. The bridleway continues through the wood for about 1 mile, eventually becoming a track.

(In winter the bridleway is muddy, to avoid this there is a permissive path to the right, opposite the information board and almost immediately bears left. Follow the path when it bears down left, through a gap in the fence, marked by two white topped posts, the permissive path goes up on the



other side of the bridleway, continue until it joins the main bridleway further on.)

- After you leave the wood follow the track around to the left and then straight on past Ham Farm to the A40. Cross the road (take care!) and with the Dashwood Arms pub on your left go up Chipp's Lane for 20 metres and take the bridleway on the right.
- Follow the path along the valley, past Fillingdon Farm until you reach the small wood, where the path splits. Take the right hand path before the wood and go along the right hand side of the hedge towards the corner of the next wood.
- At the edge of the wood the path splits again, turn left and follow the path along the edge of the field (with the hedge on your left). Continue to follow the path, eventually through the wood, using the white arrows on the trees to guide you.
- 50 metres before you reach a road there is an arrow on a tree on the left pointing up the hill to the right. The path itself is 15 metres past the tree on the right and you should follow this up the hill.
- At the top of the hill bear left in the direction of the arrow and continue along the fence until you reach a wood yard. Turn right through gap in the fence into the Wycliffe Centre, past the first of the huts and keep to the left of the beech hedge, past the water tower and across the main tarmac entrance road, carry on along the path until you reach the A40.
- Cross the A40 and turn left towards Stokenchurch for about 400 m to the Garden Centre.

Radnage Walk

Distance: 5½ miles, allow 3 to 3½ hours

Access Information: 11 stiles, several steep uphill slopes, paths likely to be muddy in winter and slippery when wet.

- From the Garden Centre, cross the A40 and turn left towards Stokenchurch. After about 100m turn right onto the footpath and head diagonally across the field towards the corner of the wood. Follow the path through the wood, indicated by white arrows, until you reach the lane.
- Turn left up the tarmac lane (watch out for vehicles when walking along roads!), past houses at Waterend until the T junction. Turn right, along this road for about 500m until a house on the left called Pophleys. Turn left into the drive and follow this to the right, past the entrance gate to the

house, following the bridleway downhill into wood.

- Follow the path through the wood and then across the field until you reach a farm track. Turn left along the track and then turn right when it splits, towards Grange Farm. Just before the farm turn right onto a footpath (signposted Chiltern Way). Follow the path up the hill, past the telegraph pole and through the gap in the hedge at the top.
- Continue to follow the Chiltern Way (sign after 20m to right), over stiles and crossing a small tarmac lane. Veer right down a tarmac drive, past Andridge Farm buildings and cottages and a line of conifers.

(For refreshments at the Three Horseshoes Pub, take the right hand path, going down the hill, across the field, then turn right along the road. Pub is after 100 m on the left. To return, turn right out of the pub and follow the road until you reach the junction).

Otherwise stay on the Chiltern Way (sharp left) until you reach the road, then turn left and follow the road to the junction.

- Then turn left along another road. After 50m turn right, cross the drive of Kirk Stile house, and follow the footpath towards the church, across the road and into the church yard.
- Cross the churchyard towards the back and over a stone stile in the wall and follow the Chiltern Way across two fields. When the path splits, bear right (leaving the Chiltern Way) and aim for the right hand side of the wood. Follow the path between the field and the wood, then after the wood continue to follow the path along the slope for ½ mile ignoring other paths.
- Eventually the path leaves the field edge and climbs up another steep hill towards Bledlow Ridge. When you reach the junction with another path turn right back down into the valley until you reach the road at the bottom.
- Turn left along the road and then turn right after 350 m onto the footpath (ignore the bridleway before this). At the end of the footpath you reach a road. Turn left along the road for 50m then turn right onto a footpath through a gate, before Ashridge Farm drive.

- Cross the field and head for the right hand end of the large barn. Pass through the gate, marked with an arrow, and straight on past the pond and down the track, through a gate, down the right hand side of the field and follow a sunken path along the edge of a wood.

- Carry on downhill through Bottom Wood until you meet the main bridleway. Turn right and follow the bridleway. Leave the wood through a gate, along a wide path between two fields and through another gate at the end.

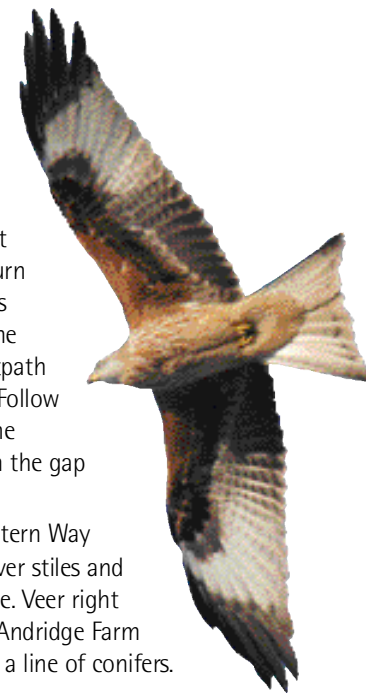
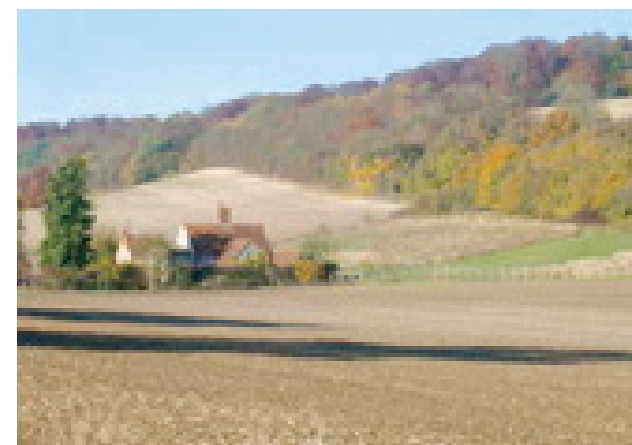
- Turn sharp left uphill at the side of house called Two Ways. After 50m, opposite a cottage called The Cottage there is a gap in the hedge on the right. Go through it and follow the path across a tarmac road and between the gardens of two houses. You will come out on to the A40 through the gate of a house called Nutfield. Turn right along the footpath of the A40 for 300m until you are opposite the Garden Centre.

Long Walk

Distance: 9½ miles, allow 4½ to 5 hours

Access information: 11 stiles, several steep uphill slopes. Paths can be muddy in winter and slippery when wet.

- Follow the instructions for the Radnage Walk until you enter Bottom Wood, then instead of turning right, turn left and follow the instructions for the Piddington Walk.



Key

- Piddington Walk
- Radnage Walk
- Public House
- Bus Stop
- Garden Centre

