

# North West Chilterns

## *Local Area Forum*



## • Local Area Plan •



August 2011

## Contents

The purpose of the Area Plan.....	3
Local Community Areas map.....	4
Map of the North West Chilterns Local Community Area and its electoral divisions .....	5
The North West Chilterns Local Area Forum membership.....	6
The North West Chilterns Local Area Forum .....	8
Local Area Forum representatives .....	9
About the North West Chilterns local community area .....	11
The North West Chilterns Local Area Forum priorities.....	14
Additional information relating to the local area priorities .....	
Potential schemes to take forward.....	
Original responses prior to prioritisation workshop.....	

# The purpose of the Area Plan

The purpose of the North West Chilterns Area Plan is to set out a clear list of local priorities that need to be addressed in order to improve the social, economic and environmental conditions within the North West Chilterns local community area over the next three years.

In some instances, the North West Chilterns Local Area Forum will be able to directly impact on actions to address one or more of the priority themes through allocation of its delegated budgets. For most of the priorities within the area plan, it is likely that the main role of the Local Area Forum (LAF) will be to act as a coordinating body and catalyst for action, with the LAF taking an investigative, supportive, developmental, championing and monitoring role.

The area plan should be regarded as an initial set of commitments, which can be added to in the light of emerging opportunities, rather than a fixed agenda that must be adhered to rigidly over the next three years. The LAF will work closely with partner organisations to seek progress on the priority themes within the area plan.

At the meeting of the Princes Risborough Local Area Forum held on Wednesday 18th February 2009 the decision was taken to form a working group to identify a way of taking the LAF forward. The working group was set up with representatives from county, district and parish councils, the Area Co-ordinator and one of the Lead Area Officers.

From discussion at the working group meetings, members agreed on the need to take forward cross-cutting issues as a priority ie those issues affecting more than one parish. In order to identify these issues, Parish Councils were requested to supply information under 5 headings, **Sustainable Environment, Health and Well Being, Safe Communities, Cohesive Communities and Thriving Economy**, so that the information could form a LCP Area Plan and be consistent with more strategic plans developed at LSP level using the same headings. These issues are noted in pages ?? to ?? of the Area Plan.

## Outcome of Area Plan Information Gathering

The information was then collated by the Area Co-ordinator to identify where there were issues common to more than one parish. At a further meeting of the working group, on the 9th September 2009 these cross-cutting issues were then prioritised as follows:

- **Sustainable Environment**

Public Transport in Rural Areas

Traffic Management, including winter gritting  
Speeding issues

Town Planning/Inappropriate Developments

- **Health and Wellbeing**

Local Access to Services

Support for Older Persons

- **Safer Communities**

Levels of Crime/Lack of Police

Antisocial Behaviour

- **Cohesive Communities**

Youth Activities/Provision

Sports and Leisure Activities

Mobile Library

- **Thriving Communities**

Affordable Housing

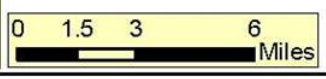
The role of the Local Area Forum is to strengthen local democratic accountability by empowering locally elected Councillors across all three tiers to take decisions, shape and influence service delivery and Council priorities in the local community area. As part of this, the LAF will be focusing on resolving issues which concern local people e.g. provision for children and young people, community safety, etc and improving services provided by councils and other public sector organisations such as the police and health services.

# Local Community Areas April 2007

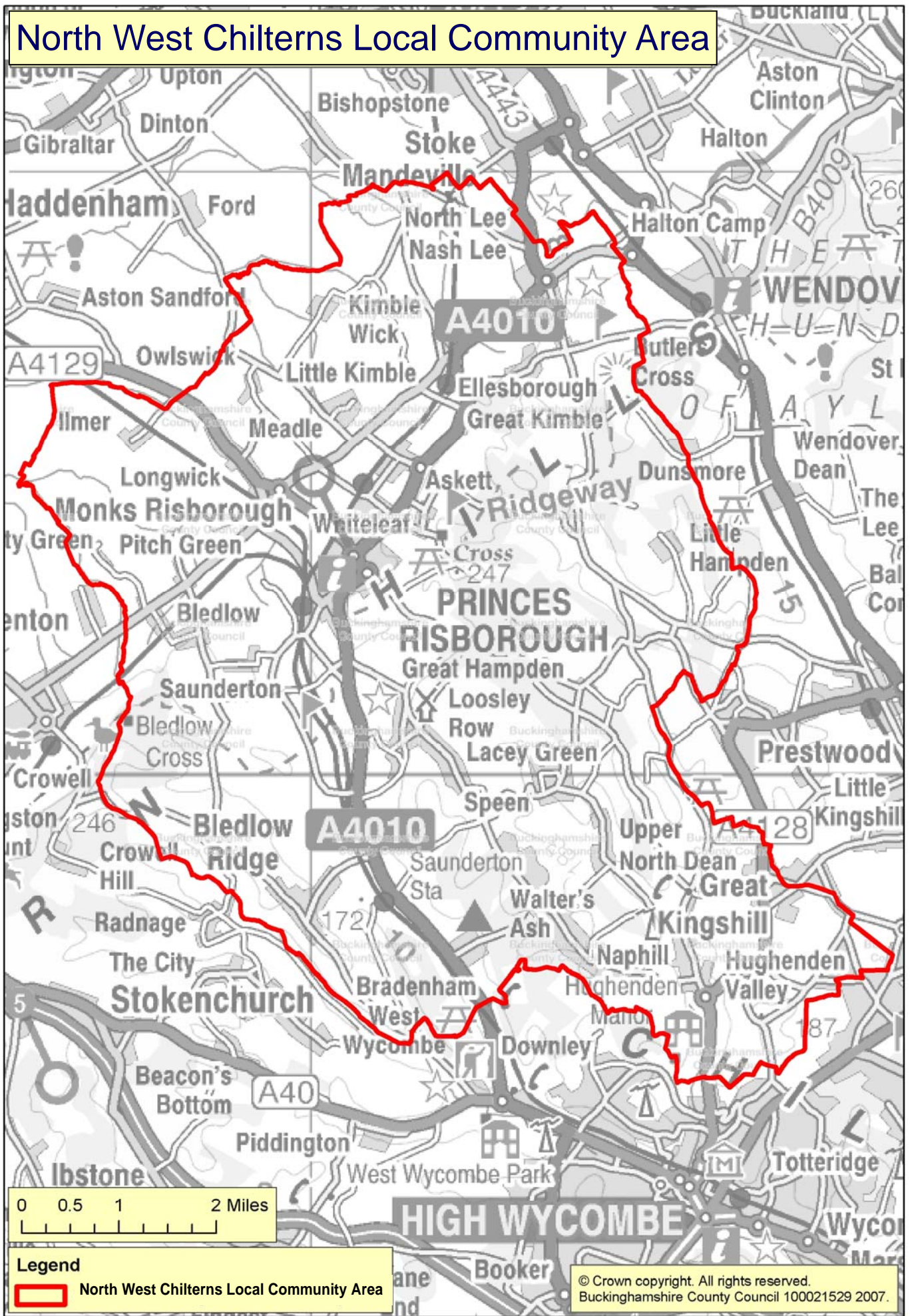


- Local Community Areas (19 off)
- Aylesbury Vale District
- Chiltern District
- South Bucks District
- Wycombe District

© Crown Copyright. All rights reserved.  
Buckinghamshire County Council  
Licence No. 076481 2007



# North West Chilterns Local Community Area



## The North West Chilterns Local Area Forum membership

The North West Chilterns local community area covers three divisions of the County Council. The County Councillors take the role of Chairman at the LAF meetings:

County Councillors in the North West Chilterns local community area		
Greater Hughenden	Richard Pushman	Phone: 01494 564152 Email: <a href="mailto:rpushman@buckscc.gov.uk">rpushman@buckscc.gov.uk</a>
Icknield and Bledlow	Paul Rogerson	Phone: 01494 488315 Email: <a href="mailto:progerson@buckscc.gov.uk">progerson@buckscc.gov.uk</a>
The Risboroughs	Carl Etholen	Phone: 01494 564771 Email: <a href="mailto:cetholen@buckscc.gov.uk">cetholen@buckscc.gov.uk</a>

The local community area falls within the Wycombe District. The Vice-Chairman for each meeting is taken from one of the following district councillors:

District Councillors in the North West Chilterns local community area		
Bill Bendyshe-Brown	The Risboroughs	Telephone: 01844 275 327 Email: <a href="mailto:william_bendyshe-brown@wycombe.gov.uk">william_bendyshe-brown@wycombe.gov.uk</a>
David Carroll	Greater Hughenden	Telephone: 01494 716967 Email: <a href="mailto:david_carroll@wycombe.gov.uk">david_carroll@wycombe.gov.uk</a>
David Devine	Bledlow and Bradenham	Telephone: 01494 564036 Email: <a href="mailto:david_devine@wycombe.gov.uk">david_devine@wycombe.gov.uk</a>
John Gibbs	Greater Hughenden	Telephone: 01494 565544 Email: <a href="mailto:john_gibbs@wycombe.gov.uk">john_gibbs@wycombe.gov.uk</a>
Dennis Green	The Risboroughs	Telephone: 01844 343198 Fax Number: 01844 343198 Email: <a href="mailto:dennis_green@wycombe.gov.uk">dennis_green@wycombe.gov.uk</a>
Gary Hall	The Risboroughs	Telephone: 01844 275276 Email: <a href="mailto:gary_hall@wycombe.gov.uk">gary_hall@wycombe.gov.uk</a>
Steve Lacey	Icknield	Telephone: 07825 010999 Email: <a href="mailto:steve.lacey@wycombe.gov.uk">steve.lacey@wycombe.gov.uk</a>

The North West Chilterns LAF also comprises the following parishes which, in addition to the County and District Councillors, are also voting

members. The LAF currently uses the proportional representation voting system (this may be reviewed shortly).

Parish council	Chairman/Clerk	Nominated representative(s)
Bledlow-cum-Saunderton	Mr M Evins	
Bradenham	Deirdre Hansen	
Ellesborough	Christine Jensen	
Great and Little Hampden	Ann Jeffs	
Great and Little Kimble	Julie Bunker	
Hughenden		
Lacey Green	Mrs S Griffiths	
Longwick-cum-Ilmer	Mrs S Griffiths	
Princes Risborough	Mrs S Griffiths	

**The LAF welcomes memberships from other partners/local groups and resident attendance. The following organisations are members of the Local Area Forum:**

- Bucks Fire and Rescue
- Bucks PCT
- Thames Valley Police

# The North West Chilterns Local Area Forum

The North West Chilterns local community area is covered by nine parishes. In each of the local community areas, a Local Area Forum (LAF) is being implemented.

Local Area Forums are meetings where local county, district and parish councillors, along with representatives of the police, fire and rescue, other public and voluntary/community sector partners, meet to discuss local residents' needs and priorities.

One of the first tasks for each Local Area Forum is to determine priorities for the local area plan. To this end, the North West Chilterns LAF held a local area planning workshop in September 2009.

The North West Chilterns LAF has been running since September 2008.

Previous meetings have looked at:

Bus services

Winter maintenance

Speeding issues and traffic calming

Risborough Community Bus

Chiltern Railways and Princes Risborough Station

Gypsy/Traveller sites

Affordable Housing

Signing and Lining policy

HS2

Section 106 Developer Contributions

Community Resilience Planning

Future meetings will look at ways of developing actions to meet the LAF's priorities. The priorities are shown on page 13, and the subsequent section describes the progress so far in addressing these.

Meetings are held throughout the area, and are open to the public who are encouraged to attend.

The Forum times and dates can be located at [www.buckscc.gov.uk](http://www.buckscc.gov.uk). Click on 'Committees' and then 'North West Chilterns Local Area Forum'.

## Local Area Forum representatives

There are a number of representatives from the County and District Council at the North West Chilterns Local Area Forum. These are:

Representative	Name	Contact
<p><b>Chairman</b> The LAF Chairman is a County Councillor agreed by the full LAF membership</p>	Richard Pushman	Phone: 01494 564152 Email: <a href="mailto:rpushman@buckscc.gov.uk">rpushman@buckscc.gov.uk</a>
<p><b>Vice-Chairman</b> The LAF Vice-Chairman is a District Councillor proposed by the District Council and agreed by the full LAF membership</p>		
<p><b>Lead Area Officer (County)</b> The Lead Area Officer is a County Council senior manager who works with the Locality Services Area Coordinator to provide senior management support to the LAF.</p>	Anne Davies	Telephone: 01296 383650 Email: <a href="mailto:adavies@buckscc.gov.uk">adavies@buckscc.gov.uk</a>
<p><b>Lead Area Officer (District)</b> The Lead Area Officer from Aylesbury Vale District Council (AVDC) is also a senior manager who works with the Locality Services Area Coordinator to provide senior management support and commitment from AVDC to the LAF.</p>		
<p><b>Localities &amp; Communities Manager</b> The Localities &amp; Communities Manager progresses both the Local Area Plan and issues raised at the LAF. The Manager also works with local parishes and a wide range of partners on projects to benefit local communities.</p>	Madeleine Howe	Telephone: 01494 475378 Email: <a href="mailto:mphowe@buckscc.gov.uk">mphowe@buckscc.gov.uk</a>
<p><b>Democratic Services Officer</b> The Democratic Services Officer is responsible for the meeting administration and note taking and organises the LAF meetings/agendas.</p>	Maureen Keyworth	Telephone: 01296 383603 Email: <a href="mailto:mkeyworth@buckscc.gov.uk">mkeyworth@buckscc.gov.uk</a>

## Service area representatives

The following County Council service areas have local representatives working in your local community area, who will be in regular attendance at the LAF drop-in sessions:

Service	Contact	
<b>Adult Social Care</b>	Karen Adamson	Tel: 01296 383847 Email: kadamson@buckscc.gov.uk
<b>Transportation</b>	<p>Transport for Buckinghamshire Main number for reporting highways issues, etc.:</p> <p>Local area technician: Rob Sumner</p> <p>Transport localities team leader : Saiqa (Si) Khan</p>	<p>Tel: 0845 230 2882</p> <p>Email: rsumner@buckscc.gov.uk</p> <p>Tel: 01494 475320 Email: srkhan@buckscc.gov.uk</p>
<b>Youth Service</b>	<p>First point of contact:</p> <p>Jane Nicholson</p> <p>Matthew Woolley</p>	<p>Tel: 07738 024010</p> <p>Tel: 07825 373692</p>

Representatives from the Police also regularly attend the LAF meetings and the local neighbourhood police team will be available at many drop-in sessions. The Neighbourhood Police team includes:

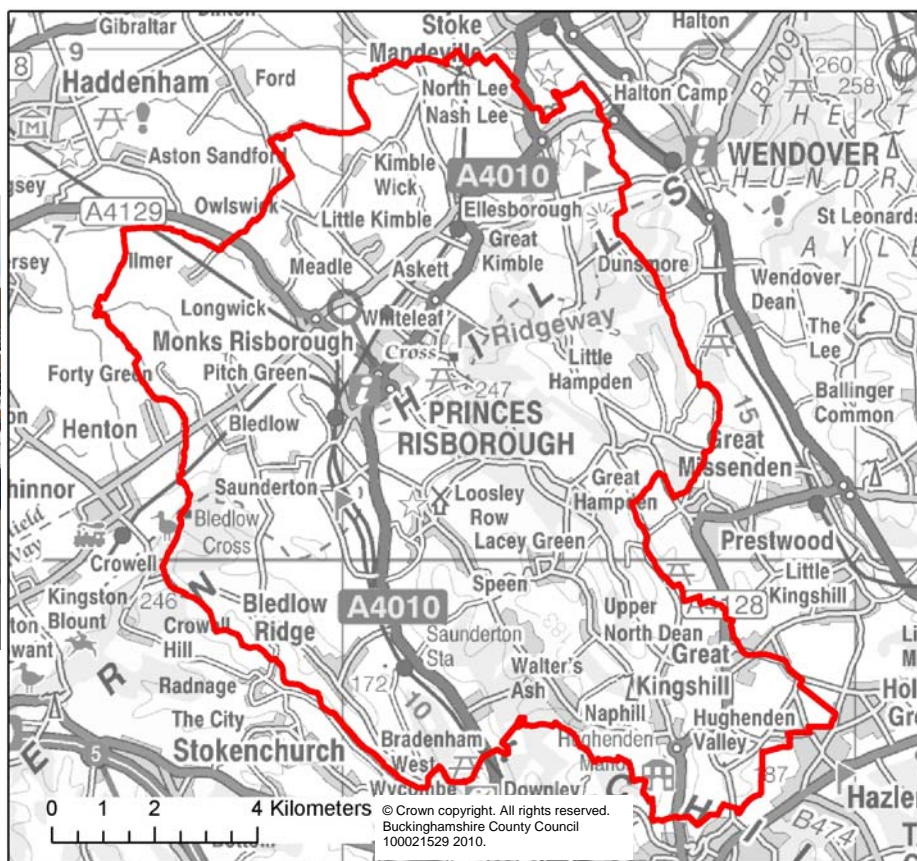
Inspector Ray Wilks, Sgt Jemma Faherty, PCs Sohrab Mohammed, Moira McKinney, Gary Churchill, Heather Blake, Andrew Ralph, Marea Logan and PCSOs Claire Davis, Robert Allen & Lisa Roberts.

For more information telephone 0845 8505 505.

# About the North West Chilterns local community area



## North West Chilterns



### General characteristics

	2001	2007
Total population:	25,168	24,680
% Bucks:	5.3%	5.0%

Age structure	Area % 2007	Bucks Index	%Change from 2001
0 to 4 yrs	5%	84	-14%
5 to 10 yrs	8%	99	-7%
11 to 19 yrs	11%	96	7%
20 to 39 yrs	19%	80	-16%
40 to 59 yrs	31%	105	-2%
60 to 74 yrs	17%	122	13%
75+ yrs	9%	124	16%

### Household composition

	Area % 2001	Bucks Index
Single occupant adults	8%	65
Couples^	23%	113
Couples with children**	28%	101
Lone parents**	3%	78
Households with nondependent children	10%	99
Pensioners	26%	115
Other (e.g. students)	3%	75

^ No children, or children have left home.  
 \*\* Household has a dependent child. Includes 'other' households with children that are not lone parent households.

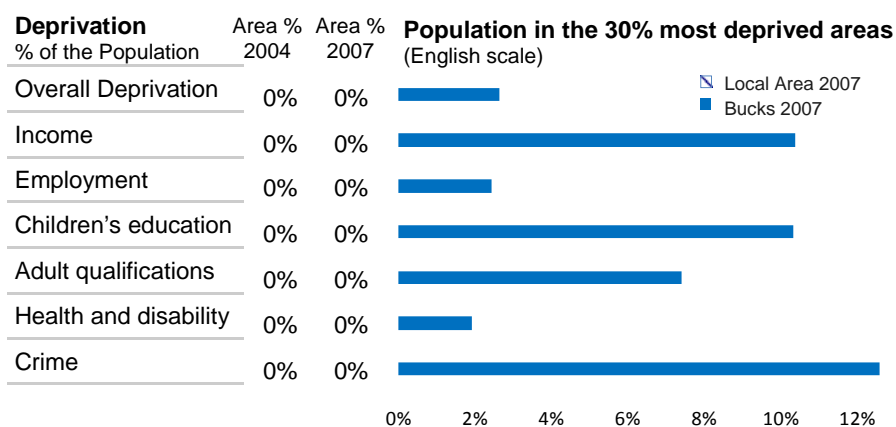
### ACORN Groups#

	Area % 2010	Bucks Index	%Change from 2006
Wealthy Professionals	19%	168	4%
Village Wealthy Commute	12%	152	-14%
Well-off Managers	15%	225	14%
Affluent Greys	11%	212	1%
Flourishing Families	14%	97	-3%
Urban Professionals	5%	34	-30%
Secure Families	9%	51	-6%
Settled Suburbia	7%	107	16%
Moderate Means	2%	30	213%
Hard Pressed	8%	72	22%

# based on households

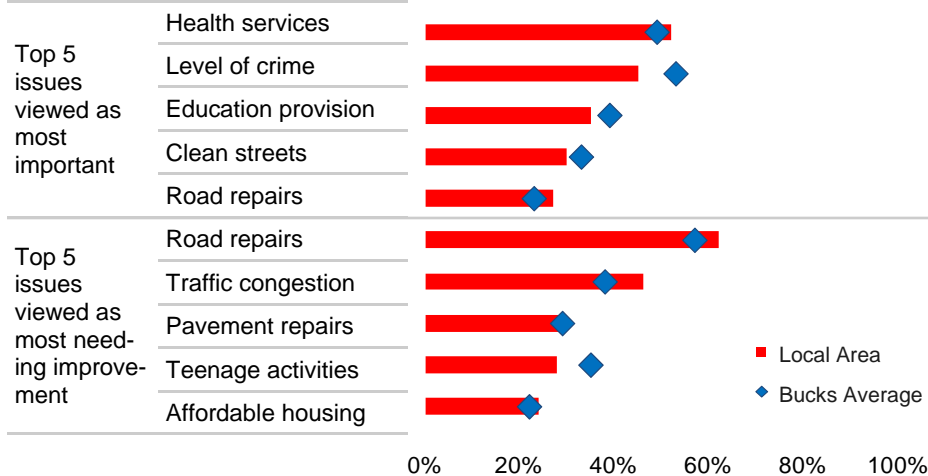
% Change: Shows the % increase/decrease of the number of people in each demographic group.

### General characteristics



### Resident priorities in the local area (2010)

The graph below shows what residents feel is most important and what is felt to be in most need of improvement in their local area (based on 226 people).



Index: An index of 100 shows an equal proportion of people in the area when compared to the county average. An index of 50 shows that there are half the proportion, and an index of 200 shows twice the proportion.

## Local Area diversity

### Ethnicity

	Area % 2001	Bucks Index
White	97.5%	106
Mixed	0.9%	66
Asian	0.9%	19
Black	0.5%	39
Chinese/other	0.3%	40
Black / Minority Ethnic	2.5%	32

### Ethnicity of Pupils

	Area % 2010	Bucks Index
Black / Minority Ethnic	5.7%	29

### Pupils first language

	Area % 2010	Bucks Index	%Change from 2009
English	96.5%	111	0.2%
Punjabi (any type)	0.2%	4	-33.3%
Urdu	0.2%	9	14.3%
Pashto/Pakhto	<0.2%	N/A	N/A
Polish	0.2%	40	40.0%
Tamil	0.0%	0	N/A
Chinese (any type)	0.3%	112	0.0%
Gujarati	<0.2%	N/A	N/A
Bengali (any type)	0.0%	0	N/A
Arabic (any type)	0.0%	0	N/A
French	0.2%	71	25.0%
Other languages	2.3%	62	26.6%

Number pupils (Bucks schools) 2009 3,516 2010 3,543

## Local Area safety

	Area 2009	Area 2010
Burglary (domestic)	61	43
Theft from vehicle	95	72
Deliberate fires	13	21
Accidental fires—dwellings	7	6

### Perceptions of local area

	Area % 2008	Bucks Index
Feel safe in day	95%	103
Feel safe after dark	66%	114

	Area % 2010	Bucks Index
People from different backgrounds get on well	89%	104
Respect / consideration of other people is a problem	16%	84
Parents take enough responsibility for children	52%	106
Satisfaction with local area as a place to live	89%	105
Providing unpaid help	54%	102

## Travel and environment

	Area 2008	Area 2009	Area 2010
Killed or Seriously injured	11	8	54
Slightly injured	64	54	613

Pothole repairs\*  
\*geographic area approximate fit to local areas

For more information contact:

- 01296 38 3373
- research@buckscc.gov.uk
- www.buckscc.gov.uk/research

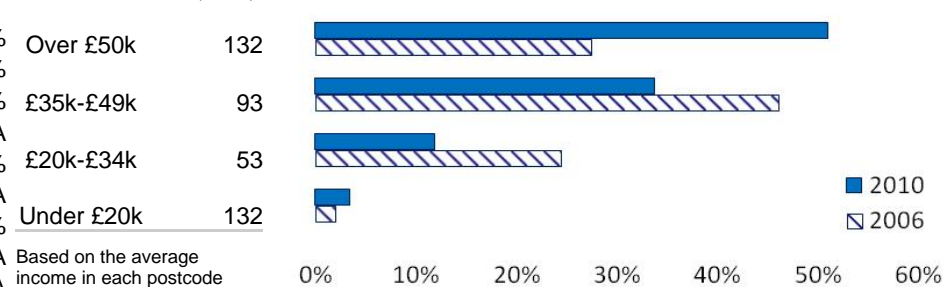
Published February 2011, ACORN supplied by CACI

## Economic situation

### Benefit claimants

	Bucks Index	% change from 2008	Benefit claimants in 2009 (%)
Job seekers allowance (unemployed looking for work)	65	139%	
Lone parent claiming (income support, child <16)	53	10.9%	
Disability living allowance (contribute to cost of disability)	81	2.8%	
Pension credits (minimum income for those 60+)	67	4.2%	

### Income



## Health, well-being and lifestyles

### Early Death Rates

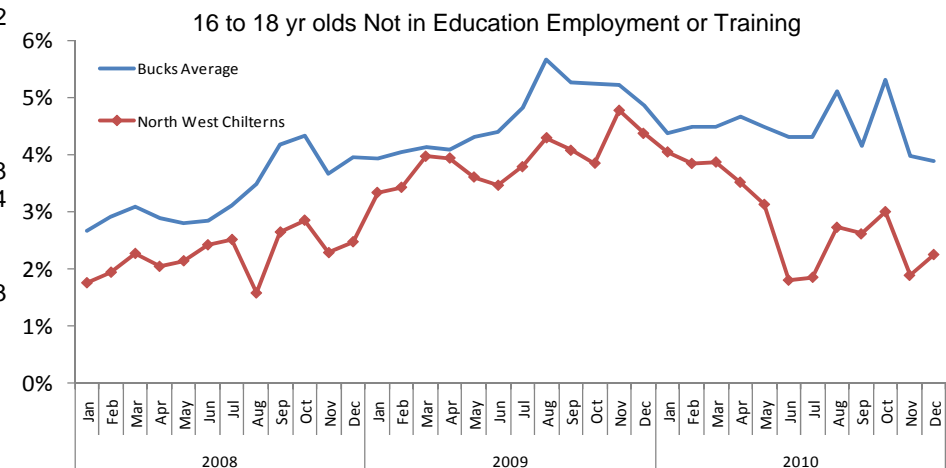
	NHS Bucks Index	Age standardised mortality rates
All causes of death (under 75s)	86	
Cancer deaths (under 75s)	93	
Circulatory deaths (under 75s)	95	

95% Confidence Interval

	NHS Bucks Index	Area 2005-2009	Confidence Interval (95%)		
			Upper	Lower	
Age standardised per 1,000 people					
All Emergency Admissions (EA)	89	5564	5857	5283	
Circulatory Diseases EA	91	429	499	367	
Respiratory Diseases EA	89	620	730	523	
First Outpatient Attendances	97	325	331	318	
		Difference from NHS Bucks	Area 2005-2009	Upper 95% CI	Lower 95% CI
Life expectancy (at birth)		1.4 yrs	82.1 yrs	81.4 yrs	82.7 yrs

## Education and young people

	2009	2010	Bucks Index (2010)
5+ A*-C grade GCSE's	77%	70%	108
Special Education Needs	2.7%	2.9%	88
Pupils claiming & receiving Free School Meals	2.2%	2.2%	39



## The North West Chilterns area priorities

The priorities for the area were identified at a workshop held in September 2009. The priorities were taken from parish plans, Service Excellence events, LTP2 and other relevant information, before additional priorities were added by the parishes.

These priorities were assessed during the workshop and the following priorities were identified. The following pages describe progress so far in addressing the priorities. This will be updated on a regular basis as the priorities are taken forward.

### Sustainable Community Strategy

The priorities are linked to the five broad themes of the Sustainable Community Strategy (SCS). The links to each theme are shown by the following colour coding:

- Sustainable environment
- Health and wellbeing
- Cohesive communities
- Thriving economies
- Safe communities

North West Chilterns Local Area identified	Additional information (see Appendix A for more detailed information on original issues)
Affordable housing	Affordable housing - especially for local people who wish to stay in the area and encourage new residents who will in turn support the local economy
Public transport in rural areas	Public/rural transport (both availability and suitability of routeing)
Traffic management including winter gritting	Traffic management focusing particularly on speeding
Speeding in rural areas	
Town planning / Inappropriate developments	
Levels of Crime / Lack of police	
Anti-social behaviour	
Youth activities / provision	
Sports and leisure activities	
Mobile library	
Local Access to Services	
Support for older people	



Issue	Initial service/partner response		Work taken forward/Actions completed/achievements
Cont'd..			<p>A music event at Princes Risborough School</p> <p>Two Young Emergency Services Course run by Bucks Fire and Rescue and Thames Valley Police</p> <p>A skateboard park in Princes Risborough</p> <p>Youth Club equipment</p> <p>Wheels to Work mopeds for two young people</p> <p>A film project through Young Addaction to work with and engage young people using or at risk of using alcohol / drugs. The film will have its first screening in September 2011.</p>
Sports and Leisure Activities	<p><b>Bucks Sport and Reactivate Bucks</b>  Bucks Sport is the brand name of the Bucks &amp; Milton Keynes Sports Partnership, one of 49 'County Sports Partnerships' nation-wide, that form a key element of the Delivery System for Sport across England. Our vision is for an active and successful sporting county before, during and after the London 2012 Games. Our aim is to create a 'single system' whereby all agencies work together more effectively to widen access, increase participation, create clear pathways and improve levels of performance in sport and physical activity.</p> <p>Through the 'Reactivate' project, we advertise all of the sessions and activities that are going on within the District and the County. You can search for an activity and see where you can take part locally, register for free and receive activity information directly to your email address. You can also add activities to the site to let other people know about what opportunities are available to them.</p> <p>There are a number of ways individuals, groups or organisations can take advantage of the Reactivate Bucks initiative</p> <ul style="list-style-type: none"> <li>• Use the activity search to view hundreds of activities taking place near you.</li> <li>• Register for our monthly updates that include the latest opportunities to get active.</li> </ul> <p>Let us know if there is a gap in provision in your local area and we maybe able to help fill it.</p> <p>In addition to the general promotion throughout the year, we also run targeted campaigns including three 'Give it a Go' weeks where the emphasis is on encouraging adults to either return to sport/physical activity or to try something new.  14th - 20th February, 16th - 22nd May, 12th - 18th September</p> <p>For further information please contact the Reactivate Bucks team on 01296 585215 or via email on <a href="mailto:info@buckssport.org">info@buckssport.org</a></p> <p><b>Leisure centres</b>  There are three leisure centres in the district and these are operated by Parkwood Community Leisure.  <b>Wycombe Sports Centre</b> - 01494 688 100  <b>Court Garden Leisure Complex</b> - 01628 405 200  <b>Risborough Springs Swim and Fitness Centre</b> - 01844 274 200  <b>Holywell Mead swimming pool</b> - 01494 769 472</p> <p><b>WREN</b> (Waste Recycling Environmental Limited) can fund a wide range of projects under the Landfill Tax Credit Scheme. Funding of between £2,000 and £50,000 is available for projects such as playgrounds, village halls, public parks, village greens, etc. biodiversity projects related to a particular species or a particular habitat and the repair of churches and buildings of all religious denominations, listed buildings and monuments.</p>	<p><b>Bucks Sport/Reactivate Bucks</b></p> <p>Tel: 01296 585215  Fax: 01296 585538  E-mail <a href="mailto:info@buckssport.org">info@buckssport.org</a></p> <p>WDC Sports  01494 421870  sportsdevelopment@wycombe.gov.uk</p> <p><b>Waste Recycling Environmental Ltd</b>  WREN House  Manor Farm  Bridgham  Norfolk  NR16 2RX</p>	<p>No specific action taken on this priority to date</p>



Issue	Initial service/partner response		Work taken forward/Actions completed/achievements
<p><b>Local Access to Health Services</b></p>	<p><b>Dial-a-ride</b> Community transport services make use of accessible vehicles to meet local transport needs not catered for by conventional public transport. They mainly operate on a not-for-profit basis and are often run by community-based organisations and volunteers.</p> <p>Wycombe Dial-a-Ride is a door-to-door bus service for those who find it difficult to use existing public transport. To use the scheme you need to register to become a member. There is an annual fee. To register, please telephone Dial-a-Ride between 9.30am and 12.30pm, using the details to the right.</p> <p>Dial-a-Ride buses collect members from their homes and take them to pre-arranged destinations in the Wycombe district. Services are available Monday to Friday from 8am to 5pm (excluding bank holidays). Journeys are booked in advance by telephone. Members can go shopping, to work, visit friends, attend day centres, doctors' surgeries, social events. Any kind of trip you want to make. Fares are roughly equivalent to bus fares for a similar journey.</p> <p>All vehicles are fully accessible and have passenger lifts, shallow steps, grab rails, enhanced safety equipment and safety locking secure tracking for wheelchairs.</p> <p>If you are disabled and live in the Wycombe district you can apply for tokens that can be used on Dial-a-Ride services.</p> <p>Buckinghamshire and Milton Keynes Rural Transport Partnership produce a guide to Alternative Transport Schemes.  <a href="http://www.alt-transport.org.uk/">http://www.alt-transport.org.uk/</a></p> <p>Communities can set up their own <b>Community Car Schemes</b> with the help of Community Impact Bucks.</p> <p>Community Car Schemes work with volunteers who have their own cars, helping transport people in their community who may struggle to use public transport for a variety of reasons such as</p> <ul style="list-style-type: none"> <li>• Older people not being able to get to the actual bus stop</li> <li>• The bus service not going to the destination required by the passenger</li> <li>• The return bus making the journey untenable as the only return bus may be only one hour, or several hours later</li> </ul> <p>Journeys can be available for a wide range of activities, including travel to lunch clubs, hospital visiting, adult education classes, shopping, leisure or simply visiting friends. A low <b>mileage charge</b> is made to cover costs.</p> <p>Most journeys that are undertaken on the Car Scheme are usually fairly local, but some can undertake longer journeys dependent on the volunteer drivers e.g. holidays, visiting relatives etc.</p> <p>Community car schemes can be a lifeline to a lot of people, with the transport they take often being one of the rare times they see people. Volunteers help people to get to their destinations in a calm and unhurried way and will usually help with coats, keys and even just a helping arm to steady people on their way.</p> <p>If you are interested in exploring the possibility of establishing such a scheme in your area contact <a href="#">Sally or Vicki</a> a call 0845 3890389</p>	<p>Wycombe Dial-a-Ride</p> <p>01494 441818</p> <p>Desborough Pavilion, Fryers Lane, High Wycombe</p>	<p>To address the problem of lack of rural transport, the LAF agreed to fund a community car scheme in conjunction with Community Impact Bucks. 'Cluster' parishes were invited to attend and publicise a meeting to seek support for such a scheme and identify support within the community for a community car scheme.</p> <p>The first meeting was held in March 2011 in Lacey Green which was attended by volunteers from the RAF who are keen to be more involved with the local community. There are now 7 potential volunteers for the area. No co-ordinators have come forward, so Community Impact Bucks will be co-ordinating them as part of their role, with a view to going "live" by July.</p>

Issue	Initial service/partner response		Work taken forward/Actions completed/achievements
<p><b>Support for Older People</b></p>	<p><b>Updated/ tailored information requested</b></p> <p>There is a variety of services available to support older people to live in their own homes. These include home care, day care, hot/frozen meal delivery and short-term breaks. The breakdown for numbers of people receiving these services in the NW Chilterns Local Community is as follows:</p> <p><b>Figures awaited</b></p> <ul style="list-style-type: none"> <li>Home care</li> <li>Day care</li> <li>Meals</li> <li>Short-term break</li> <li>Direct payments</li> </ul> <p>The eligibility criteria is assessed in four bands: critical, substantial, low and moderate. The services above are offered to those with critical and substantial needs. There are ..... service users in the NW Chilterns local community area accessing the In-Touch service, which incorporates a quarterly telephone support call, or the In-Touch Plus service (weekly telephone support call). Other prevention projects for service users with low and moderate needs also include Falls' prevention classes</p> <p>"Telecare", also known as "assistive technology", is a term for home safety equipment that links to a monitoring centre. If an incident occurs, a message is sent to the monitoring centre using the home telephone line and help can be called quickly. The simplest form of Telecare is a care alarm and pendant. There are also other pieces of equipment which are not linked to a monitoring centre. This is referred to as "stand alone technology". They are simple solutions which can be of enormous help to vulnerable people and their carers. For example, a Magi-plug is a simple device that can replace the traditional bath or sink plug and if the taps are left running, it will automatically release the water before it overflows. We have provided both forms of equipment to nearly 1000 Buckinghamshire residents in the last year of which about ..... are from the NW Chilterns area. Our system-based equipment are monitored (24/7) by Invicta Telecare Call centre and over 99% of the alarms are answered under 60 seconds. Our clients raised 3,129 alarms within the last 8 months (up to April 2010). Some of these alarms prevented serious incidents such as fire, and remaining on the floor for hours after having had a fall (70 falls and 17 fire-related incidents). Also on 41 occasions medical help or emergency ambulance services visited our clients. Moreover, on 178 occasions clients felt scared as a result of being alone/noises outside their houses and consequently raised an alarm. In such occasions, they were given assurances by call centre staff. The plan for 2010/11 is to provide Telecare to 600 new people and also keep support the 1000 service users who are already on the system. Currently Telecare (both equipment and monitoring) is free-of charge. However, around August 2010 a charge will be introduced, although it will be means-tested and free to those who cannot afford to pay. There is a wide-range of other prevention projects available. For more information on the services available to support older people to live in their own homes, please telephone Karen Adamson on 01296 383847.</p>	<p>Andrew Capjon/ Adam Willison</p> <p>BCC</p>	<p>No specific action taken forward on this priority</p>



Issue	Initial service/partner response	Contacts	Work taken forward/Actions completed/achievements
<p><b>Speeding through villages/ Traffic management</b></p> <p><b>Speeding has been identified as a priority for the NAG with a number of roads highlighted by Parish Councils and residents.</b></p>	<p><b>Response given by Thames Valley Police:</b></p> <p>Speeding is a priority for nearly all parishes and NAGs within the NW Chilterns neighbourhoods. Speed indication devices (SIDs), Community SpeedWatch and formal speed enforcement with a laser gun are all things which are being regularly used by the local neighbourhood team. The drivers 'caught' by these enforcement exercises are usually a mixture of commuters, parents on the school run, and local residents. Education is the aim of these checks, and a Speed Awareness course is usually offered to offenders who have exceeded the speed limit by a small amount, rather than prosecution. For example, in a 30mph zone, the course is offered to people caught driving at 39mph or less; speeds of 40mph or more are not eligible for the course, and will automatically attract a fine and a minimum of three penalty points. Those found speeding at 50mph or more in a 30mph limit automatically receive a court summons. Parishes can consider the purchase of Community SpeedWatch equipment. If a joint purchase is possible then the cost can be shared between a number of parishes. The local neighbourhood team also has one set of Community SpeedWatch equipment that can be loaned to parishes who wish to evaluate the kit and its effectiveness first before committing to buy it themselves. Any parishes interested in doing this should contact their local neighbourhood team.</p> <p><b>Response from TfB:</b></p> <p>Legal enforcement of speed limits is a matter for the Police. Slower speeds can be encouraged through initiative such as Community Speed Watch and the use of Temporary Speed Indicator Devices and the County Council can discuss both with the local community. The countywide speed limit review is continuing and it is hoped to complete this major project by 2011.</p> <p>There are a number of tools that can be deployed to reduce vehicle speeds. These range from Vehicle Activated Signs (VAS) to Speed Indicator Devices (SIDs) to community speed watch campaigns, and as a last resort build outs and traffic cushions. TfB are nearing the completion of the Speed Limit Review programme where traffic speed limits have been reviewed across the county. The Casualty Reduction team focus their work on areas of highest casualties; and where speed is identified as an issue they will work to address the problem. For other areas, such as rural villages the local community are encouraged to take the lead and use the Local Area Forum and Transport Delegated Budget to purchase/hire equipment such as SIDs, or work with the Casualty Reduction team on local speed reduction initiatives such as Community Speed Watch, or traffic calming measures.</p>	<p>TVP</p> <p>Jim Stevens</p> <p>BCC</p> <p>Edmund Gurney</p> <p>BCC</p>	<p><b><u>TfB work/funded</u></b></p> <p>A number of parishes in the LAF area are concerned about speeding traffic in certain locations. Ellesborough Parish Council raised the issue of speeding traffic with BCC about a year ago (Summer 2010). They enlisted the help of Sir Jackie Stewart, Jim Stevens (Head of Transportation) and Val Letheren (Cabinet Member for Transportation). Officers from BCC (TfB and Localities) attended a number of meetings with the Parish Council to talk about a number of issues relating to speeding traffic and HGV movements.</p> <p>TfB are implementing a programme of signing and lining around the parish to address the HGV issue as well as highlighting potential hazards such as bends etc. This is almost complete as at 23<sup>rd</sup> August 2011.</p> <p>TfB were keen to allow Ellesborough to trial a poster campaign with designs from local school children and judged by Sir Jackie Stewart. They also consulted with all the parishes in the NW Chilterns LAF on the proposals.</p> <p>Ellesborough Parish Council will be reporting on the results of the trial and it is hoped that the revised poster policy should be finalised in the autumn of 2011 and can then be rolled out across the county.</p> <p>The parish also asked for and were granted an extension of 2 speed limits, one 30mph along the Wendover Road further towards the golf club (now installed) and one 40mph along Missenden Road towards the Dunsmore turning.</p> <p><b><u>LAF work/funded</u></b></p> <p>Having identified speeding as one of the Local Priorities, NW Chilterns LAF funded village gates for Ellesborough (£3,300). Only one has been installed along Ellesborough Road due to lack of a suitable site on the opposite side of the road. The LAF also funded the cost of the mobile VAS system (£7,500). This consists of 2 VAS units and installation of 10 posts in the parish on which to mount them. The Parish Council was commissioned to implement this scheme on behalf of the LAF. The money was paid to the Parish Council to source the equipment directly and with the proviso that all accounting/audit trail procedures were followed. A small amount of money was left over at the end of the process which it was agreed could be spent on carrying out subsequent speed monitoring with Truvello strips to measure the effect of the VAS.</p> <p>Once the pilot is completed there will be an opportunity for other parishes to consider implementing similar schemes.</p> <p>The mobile VAS scheme will be launched at a press event on 7th October at Ellesborough Village Hall.</p>

## **Additional information relating to the local area priorities**

# Potential schemes to take forward

---

## Original responses prior to prioritisation workshop

Prior to the local area planning workshop all the parishes in the North West Chilterns local community area were invited to submit individual responses to local issues and concerns.

These received responses were listed according to the five broad themes of the Sustainable Communities Strategy:

- Thriving economy
- Sustainable environment
- Safe communities
- Health and wellbeing
- Cohesive and strong communities.

At the workshop, the individual issues were combined to form generic issues to enable the top priorities for the Local Area Forum to be identified.

**The original responses—alongside update information from some parishes—are provided on the following pages.**

	Sustainable Environment											
	Public transport	Roads and pavement maintenance	Traffic management	Tips and household waste	Parks and open spaces		Access to nature	Country footpaths & rights of way	Town planning	Levels of pollution	Access to services and facilities by public transport	Walking & Cycling
<b>Bledlow cum Saunderton</b>	Better links to Princes Risborough	Too many potholes - Haw Lane, Wifans Lane & Chinnor Rd, Bledlow Ridge	Enforcement of speed limits - B4009; Chinnor Rd, Bledlow Ridge; Haw Lane; A4010 at Saunderton	Should Wigans Lane facility be relocated it would be a cause for concern				Cycle path from Rose & Crown to Princes Risborough - vegetation/ overgrown removed only			Many of our parishoners have doctors and dentists in Risborough and public bus services from BCS are primarily centred on Wycombe & Aylesbury	
	London/ Birmingham Freight Line and TGV	Flooding is an intermittent problem under the bridge at Haw Lane and on B4009 - in Upper Icknield Way near the railway bridge - on the A4010 at Slough Lane, Saunderton (A4010 culverts need attention/ extension)	Cars parked on highway verge a particular problem in Haw Lane.									
	London/ Birmingham former could result in householder disturbance	Floods also in West Lane, Bledlow under railway bridge - in extremis runs down West Lane to B4009	Redevelopment of Molins - urgent need of low bridge signs on A4010 to warn of low bridge in Haw Lane.									
			SatNav problems - inappropriate use of Slough Lane by HGV's									
<b>Bradenham</b>			There is a continuous speeding issue on Bradenham Wood Lane. Traffic speeds too much.								Very limited	

	Sustainable Environment											
	Public transport	Roads and pavement maintenance	Traffic management	Tips and household waste	Parks and open spaces		Access to nature	Country footpaths & rights of way	Town planning	Levels of pollution	Access to services and facilities by public transport	Walking & Cycling
<b>Ellesborough</b>		Winter Gritting	Speeding issues along Chalkshire Road & Missenden Road									
		Gully Cleaning	Speed Limit Review - Area 5 - require the 40mph roundels moved on Missenden Road back to beyond the junction with Dunsmore									
		Potholes	HGV's - roads unsuitable									
			Chalkshire Road / Missenden Road used as rat runs to avoid A4010									
<b>Hughenden</b>	Lack of buses through North Dean, Hughenden Valley through village and Cryers Hill Road - Suggest changes to routes should be explored in order to improve provision	Generally actioned individually through Highways on Call. It was noted that funding for large amounts of money must come through the LCP and there are not enough funds available for this so Parishes have to go direct to BCC - Clarification of responsibilities	Speeding issues in Windmill Lane; North Road; Brimmers Hill, Widmer End; Missenden Road; Cryers Hill Road and A4128 Great Kingshill; Valley Road; Warrendene Road; Hampden Road, Hughenden Valley; Main Road; New Road, Naphill & Walters Ash.	No perceived problem / not applicable	Should remain with the individual Parish		No perceived problem / not applicable	Should remain with the individual Parish - although BCC has cut back on the budget allocation for the P3 works	Lots of parishes suffer from the urban sprawl, particularly the impact on roads for those who border the towns. Certificate of Lawfulness for Proposed use is causing problems with new build in the AONB	No perceived problem / not applicable	There is no access via direct public transport to Doctors surgery in Hughenden Valley from Great Kingshill. There is a problem with access to post offices from Hughenden Valley via public transport and there are no dentists or vets within the parish - Suggest changes to routes should be explored in order to improve provision.	This can be wider than just the parish, as they can join communities. Hughenden PC want a cycle path from Great Kingshill to Prestwood and from Hughenden Valley to High Wycombe.
			Major problems with HGV's running throughout all villages within the parish (and wider community) - Consider signage? Consider cross border issues									

	Sustainable Environment											
	Public transport	Roads and pavement maintenance	Traffic management	Tips and household waste	Parks and open spaces		Access to nature	Country footpaths & rights of way	Town planning	Levels of pollution	Access to services and facilities by public transport	Walking & Cycling
<b>Lacey Green</b>	OK - Could go via rail	Poor since February.	Entrance Gates - Where are they	Fairly good	No Problems		None available	Rights of Way act very slowly and only act once they have deliberated over a long period of time as to who has responsibility for the path. Even then they do not assert any authority (Kiln Lane). It is easier to loose the plot in paperwork & several departments and hope we all forget.	Planning is at the behest of WDC. Local opinions not noted. The Parish Council objected to Methodist site not being given over to small housing development. WDC approved I house, PC was in favour of small houses at Rose Villa. WDC rejected - why?			
	Buses through village are good. No access to rail	Road signage needs cleaning	Speed posts need replacing									
<b>Longwick cum Ilmer</b>	Improving but services need advertising	Potholes	Speeding	The bins in the layby are not emptied regularly enough and therefore is causing a problem of litter in the layby.								
			Parking on the pavement	Flytipping in the rural roads								
<b>Princes Risborough</b>	Bus and rail integration	Very poor - appalling in places	Peak time congestion	Could be improved	Current ones well maintained		Good	Icknield Way of concern - susceptible to traffic damage and footpaths overgrown during summer period	Better coordination between local tiers of Government	Unknown	Fair but needs better east-west linkage	Needs dedicated cycle lanes
			One-way system may resolve town centre issues		Need for new park, southern side also Picts Lane area				More consultation with Town Council			
			Access to secondary school		Need for more sporting facilities							

	Sustainable Environment											
	Public transport	Roads and pavement maintenance	Traffic management	Tips and household waste	Parks and open spaces		Access to nature	Country foot-paths & rights of way	Town planning	Levels of pollution	Access to services and facilities by public transport	Walking & Cycling
<b>Princes Risborough Cont'd</b>	Better links to Princes Risborough	<b>Too many potholes</b> (1) Haw Lane, Wigans Lane & Chinnor Rd, Bledlow Ridge (2) Repairs do not last	<b>Enforcement of speed limits</b> - B4009; Chinnor Rd, Bledlow Ridge; Haw Lane; A4010 at Saunderton	Should Wigans Lane facility be relocated it would be a cause for concern	Should remain with the individual Parish		No perceived problem / not applicable	Should remain with the individual Parish - although BCC has cut back on the budget allocation for the P3 works	Lots of parishes suffer from the urban sprawl, particularly those who border the towns. Certificate of Lawfulness for Proposed use is causing problems with new build in the AONB	No perceived problem / not applicable	<b>Access to Health Services</b> (1) Many of our parishoners have doctors and dentists in Risborough and public bus services from BCS are primarily centred on Wycombe & Aylesbury (2) here is no access via direct public transport to Doctors surgery in Hughenden Valley from Great Kingshill. There is a proble with access to post offices from Hughenden Valley via public transport and there are no dentists or vets within the parish - Suggest changes to routes should be explored in order to improve provision.	This can be wider than just the parish, as they can join communities. Hughenden PC want a cycle path from Great Kingshill to Prestwood and from Hughenden Valley to High Wycombe.
	<b>Poor public transport - rural areas</b> (1) Lack of buses through North Dean, Hughenden Valley through village and Cryers Hill - suggest changes to route should be explored in order to improve provision (2) Public transport needs to serve those without access to a car in many rural villages	<b>Flooding</b> (1)Flooding is an intermittent problem under the bridge at Haw Lane and on B4009 - in Upper Icknield Way near the railway bridge - on the A4010 at Slough Lane, Saunderton (A4010 culverts need attention/extension) (2) Floods also in West Lane, Bledlow under railway bridge - in extreme runs down West Lane to B4009	<b>Speeding issues</b> (1) Windmill Lane; North Road; Brimmers Hill, Widmer End; Missenden Road; Cryers Hill Road and A4128 Great Kingshill; Valley Road; Warrendene Road; Hampden Road, Hughenden Valley; Main Road; New Road, Naphill & Walters Ash. (2) Chalkshire Road and Missenden Road	No perceived problem / not applicable	No Problems		None available	Rights of Way act very slowly and only act once they have deliberated over a long period of time as to who has responsibility for the path. Even then they do not assert any authority (Kiln Lane). It is easier to loose the plot in paperwork & several departments and hope we all forget.	Planning is at the behest of WDC. Local opinions not noted. The Parish Council objected to Methodist site not being given over to small housing development. WDC approved I house, PC was in favour of small houses at Rose Villa. WDC rejected - why?	Widmer End - concerns about pollution from traffic in rural area	(3) People not aware of inter-hospital transport links between Wycombe and Aylesbury (poorly advertised)	Needs dedicated cycle lanes
	RACA Community Bus Project	<b>Maintenance - General</b> (1) Poor since February (2) Very poor - appaling in places (3) Launch of Local Area Technician - LAT excellent	(3) New Rd, Longwick Rd, Wycombe Rd, Place Farm Way, Askett, Chalkshire Rd, Butlers Cross, A4010 Little Kimble, Marsh Road, Kimble; Church Lane, Great Kimble; Thame Road, Longwick; Sandpit Lane, Bledlow; A4010 Saunderton; Chinnor Rd, Bledlow Ridge; Haw Lane, Bledlow Ridge; B4009 Bledlow; Main Road, Lacey Green; Pink Road, Lacey Green; Chapel Hill, Speen; Studridge Lane, Speen; Hampden Rd, Speen. Rush hour times are problematic within 30mph speed restrictions. (4) Bradenham Woods Lane (5) Excessive speeding generally across the area	Fairly good	Current ones well maintained		Good	Icknield Way of concern - susceptible to traffic damage and foot-paths overgrown during summer period	Better coordination between local tiers of Governmnet		Very limited	Lack of provision for cyclists in West Wycombe, Naphill, Bradenham area. Creating traffic congestion.

	Sustainable Environment											
	Public transport	Roads and pavement maintenance	Traffic management	Tips and household waste	Parks and open spaces		Access to nature	Country footpaths & rights of way	Town planning	Levels of pollution	Access to services and facilities by public transport	Walking & Cycling
<b>Princes Risborough Cont'd..</b>	London/ Birmingham Freight Line and TGV - Could result in householder disturbance		<b>Speed Limit Review</b> - Area 5 - require the 40mph roundels moved on Missenden Road back to beyond the junction with Dunsmore	The bins in the layby are not emptied regularly enough and therefore is causing a problem of litter in the layby.	Need for new park, southern side also Picts Lane area		Widmer End & Four Ashes - what is the future of conservation area in Four Ashes?	Need to inform and influence BCC's new Rights of Way Improvement Plan	More consultation with Town Council		Fair but needs better east-west linkage	Need to produce a safety cycling plan
	OK - Could go via rail	Winter Gritting	<b>Parking</b> (1) Cars parked on highway verge a particular problem in Haw Lane (2) Parking on the pavement (3) Parking issues in Princes Risborough especially High Street as buses cant get down (4) Parking issues on Main Road by Naphill Primary School at start and cease school times (5) Car parking needs to be improved	Flytipping in the rural roads	Need for more sporting facilities		Need to establish local volunteer management of Brush Hill Local Nature Reserve		Up to 600 new houses to be built in Risborough - the impact on the traffic congestion has to be examined			An ageing population will require more town furniture and sheltered places to rest
	Buses through village are good. No access to rail	Gully Cleaning	<b>HGVs</b> (1) roads unsuitable (2) SatNav problems - inappropriate use of Slough Lane by HGV's (3) Major problems with HGV's running throughout all villages within the parish (and wider community) - Consider signage? Consider cross border issues (4) Vehicle size and speed in rural areas (Marsh)	Could be improved	Open spaces well maintained				There is scope for both better definition of the urban edge and beautification of tarmaced pavement areas by more planting and street sculptures			Cycle path from Rose & Crown to Princes Risborough - vegetation/ overgrown removed only
	Bus and rail integration	Generally actioned individually through Highways on Call. It was noted that funding for large amounts of money must come through the LCP and there are not enough funds available for this so Parishes have to go direct to BCC - Clarification of responsibilities	Chalkshire Road / Missenden Road used as rat runs to avoid A4010		Widmer End - worry about the disappearance of green spaces e.g Wellesbourne Campus Development				Need to produce a town centre design statement with community wide input			

	Sustainable Environment											
	Public transport	Roads and pavement maintenance	Traffic management	Tips and household waste		Parks and open spaces	Access to nature	Country foot-paths & rights of way	Town planning	Levels of pollution	Access to services and facilities by public transport	Walking & Cycling
<b>Princes Risborough Cont'd</b>	No buses run from either the station or some of the outlying villages into the town.	Road signage needs cleaning	Entrance Gates - Where are they									
	Buses also have no provision for carrying bicycles; thereby increasing the number of vehicles used for moving between both countryside and the station to and through the town.	Extra funding - 3.25m for road maintenance	Redevelopment of Molins - urgen need of low bridge signs on A4010 to warn of low bridge in Haw Lane.									
	Improving but services need advertising	Issue with grass cutting, rural roadside verges	Speed posts need replacing									
	Loss of bus service from Princes Risborough to Thame impacted on children attending school in Thame (out of County)	Room for improvement in street lighting to some areas in Princes Risborough	Peak time congestion									
	What about considering demand responsive	Disability access to pavements needs to be addressed	One-way system may resolve town centre issues									
	Accessibility of Dial-a-Ride services - negative		Access to secondary school									
	Buses are not taking the right routes/stops. No consultation with residents as to where they want to go, so service is not suitable (eg Bledlow Rider)		Lack of pedestrian crossing on Main Road, Naphill/Walters Ash									
	Public transport fares too high		Widmer End - volume of traffic in North Rd, Brimmers Hill and Windmill Lane then when traffic is low, speeding is a problem									
	Positive - concessionary travel for older peopl		Older people not having facilities to cross the roads in Widmer End eg. Brimmers Hill, North Road									
	Disability access to buses needs to be addressed											
	Good transport links for rail and road - A4010, Line 300, Train											

	Sustainable Environment											
	Public transport	Roads and pavement maintenance	Traffic management	Tips and household waste	Parks and open spaces		Access to nature	Country footpaths & rights of way	Town planning	Levels of pollution	Access to services and facilities by public transport	Walking & Cycling
<b>Accessibility Planning</b>												
<b>Local transport plan 2</b>												
<b>NAG</b>			Speeding - Excess speed has been named as a problem on the following roads: New Rd, Longwick Rd, Wycombe Rd, Place Farm Way, Asckett, Chalkshire Rd, Butlers Cross, A4010 Little Kimble, Marsh Road, Kimble; Church Lane, Great Kimble; Thame Road, Longwick; Sandpit Lane, Bledlow; A4010 Saunderton; Chinnor Rd, Bledlow Ridge; Haw Lane, Bledlow Ridge; B4009 Bledlow; Main Road, Lacey Green; Pink Road, Lacey Green; Chapel Hill, Speen; Studridge Lane, Speen; Hampden Rd, Speen. Rush hour times are problematic within 30mph speed restrictions.	Flytipping								
			Parking									
<b>Service Excellence</b>	Good transport links for rail and road - A4010, Line 300, Train	Launch of Local Area Technician - excellent LAT	Vehicle size and speed in rural areas (Marsh)		Open spaces well maintained					Widmer End - concerns about pollution from traffic in rural area	People not aware of inter-hospital transport links between Wycombe and Aylesbury (poorly advertised)	Lack of provision for cyclists in West Wycombe, Naphill, Bradenham area. Creating traffic congestion.
	RACA Community Bus Project	Too many potholes - repairs do not last	Parking issues in Princes Risborough especially High Street as buses cant get down		Widmer End - worry about the disappearance of green spaces e.g Wellesbourne Campus Development							
	Poor public transport - rural areas	Extra funding - 3.25m for road maintenance	Excessive speeding generally across the area				Widmer End & Four Ashes - what is the future of conservation area in Four Ashes?					

	Sustainable Environment											
	Public transport	Roads and pavement maintenance	Traffic management	Tips and household waste	Parks and open spaces		Access to nature	Country footpaths & rights of way	Town planning	Levels of pollution	Access to services and facilities by public transport	Walking & Cycling
	Loss of bus service from Princes Risborough to Thame impacted on children attending school in Thame (out of County)	Flooding in rural areas - Haw Lane, Slough Lane	Lack of pedestrian crossing on Main Road, Naphill/Walters Ash									
	What about considering demand responsive	Issue with grass cutting, rural roadside verges	Parking issues on Main Road by Naphill Primary School at start and cease school times									
	Accessibility of Dial-a-Ride services - negative		Widmer End - volume of traffic in North Rd, Brimmers Hill and Windmill Lane then when traffic is low, speeding is a problem									
	Buses are not taking the right routes/stops. No consultation with residents as to where they want to go, so service is not suitable (e.g. Bledlow Rider)		Older people not having facilities to cross the roads in Widmer End eg. Brimmers Hill, North Road									
	Public transport needs to serve those without access to a car in many rural villages											
	Positive - concessionary travel for older people											
	Public transport fares too high											
<b>Market Town Healthcheck</b>	Disability access to buses needs to be addressed	Room for improvement in street lighting to some areas in Princes Risborough	Car parking needs to be improved				Need to establish local volunteer management of Brush Hill Local Nature Reserve	Need to inform and influence BCC's new Rights of Way Improvement Plan	Up to 600 new houses to be built in Risborough - the impact on the traffic congestion has to be examined			Need to produce a safety cycling plan
	No buses run from either the station or some of the outlying villages into the town.	Disability access to pavements needs to be addressed							There is scope for both better definition of the urban edge and beautification of tarmaced pavement areas by more planting and street sculptures			An ageing population will require more town furniture and sheltered places to rest
	Buses also have no provision for carrying bicycles; thereby increasing the number of vehicles used for moving between both countryside and the station to and through the town.								Need to produce a town centre design statement with community wide input			

	Health and wellbeing							
	Facilities for young children	Support for older people to live in their own homes	Support for people with disabilities to live independently		Support for children and families	Support for carers	Health services	Healthy lifestyles
<b>Bledlow cum Saunderton</b>	Pre-school in Bledlow and Bledlow Ridge	Dial a Ride	Dial a Ride		Doctors surgeries are in Princes Risborough. Could do with more local access		Visiting pharmacy?	
	Playgrounds in Bledlow and Bledlow Ridge	ASC Surgeries	ASC Surgeries					
<b>Bradenham</b>								
<b>Ellesborough</b>								
<b>Hughenden</b>	Should remain with the individual Parish	Should remain with the individual Parish	Should remain with the individual Parish		Should remain with the individual Parish	Should remain with the individual Parish	Should remain with the individual Parish	Should remain with the individual Parish
<b>Longwick cum Ilmer</b>								
<b>Princes Risborough</b>	Average	Good	Good		Average	Unknown	After hours GP access very poor	Fair
								Need for more sporting facilities
	Pre-school in Bledlow and Bledlow Ridge	Dial a Ride	Dial a Ride		We need greatly improved communication and working together between all services working with children and their families especially with extended services and development of childrens centre	Should remain with the individual Parish	Visiting pharmacy?	Should remain with the individual Parish
	Playgrounds in Bledlow and Bledlow Ridge	ASC Surgeries	ASC Surgeries		Clients would like a one stop shop to access health services, support and activities .i.e. childrens centre	Unknown	Doctors surgeries are in Princes Risborough. Could do with more local access	Fair
	Should remain with the individual Parish	Should remain with the individual Parish	Should remain with the individual Parish		Should remain with the individual Parish		Should remain with the individual Parish	Need for more sporting facilities
	Average	Good	Good		Average		After hours GP access very poor	
		Huge problem recruiting carers in Princes Risborough			Online Café - <a href="http://www.bucksdaat.co.uk">www.bucksdaat.co.uk</a> - opportunity for parents and groups to ask questions and seek support (Drugs & Alcohol Action Team)		Some not happy with changes to A&E services at Wycombe	
		Feelings of isolation for older people					Poor access to dentists	
							Issues about having to go to Wycombe Hospital for treatment - parking expensive, journey time	
							Good health facilities but no NHS dentist	

	Health and wellbeing							
	Facilities for young children	Support for older people to live in their own homes	Support for people with disabilities to live independently		Support for children and families	Support for carers	Health services	Healthy lifestyles
<b>Accessibility Planning</b>								
<b>Local transport plan 2</b>								
<b>NAG</b>								
<b>Service Excellence</b>		Huge problem recruiting carers in Princes Risborough			We need greatly improved communication and working together between all services working with children and their families especially with extended services and development of childrens centre		Some not happy with changes to A&E services at Wycombe	
		Feelings of isolation for older people			Online Café - <a href="http://www.bucksdaat.co.uk">www.bucksdaat.co.uk</a> - opportunity for parents and groups to ask questions and seek support (Drugs & Alcohol Action Team)		Poor access to dentists	
					Clients would like a one stop shop to access health services, support and activities .i.e. childrens centre		Issues about having to go to Wycombe Hospital for treatment - parking expensive, journey time	
<b>Market Town Healthcheck</b>							Good health facilities but no NHS dentist	

	Cohesive Communities									
	Sports and Leisure activities	Cultural facilities	Shopping facilities	Community facilities		Volunteering opportunities/ support for voluntary & community	Activities for young people	Community cohesion	Libraries	Communications and Information
<b>Bledlow cum Saunderton</b>							Provision of children's playground in Saunderton.		Better mobile facilities in Saunderton. The library currently stops at the Hostel and Trout Hollow. The latter is hardly a centre of built-up housing, is close anyway to Princes Risborough. A stop at Saunderton should be considered.	
							Provision of teen play/ leisure facilities in Bledlow Ridge (BRAC)			
<b>Bradenham</b>										
<b>Ellesborough</b>										
<b>Hughenden</b>	Opportunities for cross-border cooperation, providing transport to enable access to wider facilities.	No perceived problem / not applicable	No perceived problem / not applicable	Should remain with the individual Parish		No perceived problem / not applicable	There is a lack of coordination for access to youth facilities for children in outlying villages, so rural communities miss out on provision. Youth Officer need to come out to Parish Councils to let them know what is available.	No perceived problem / not applicable	No perceived problem / not applicable	Should remain with the individual Parish
<b>Longwick cum Ilmer</b>			There is a concern regarding the number of empty shops in Princes Risborough which is the nearest shopping facility to Longwick							
<b>Princes Risborough</b>	Fair	Poor	Poor	Below par		Self supporting	Poor	Good	Average	Fair
	Need for more sporting facilities (eg. the Molins Sports Ground to be returned to use)	Need cultural civic centre								

	Cohesive Communities									
	Sports and Leisure activities	Cultural facilities	Shopping facilities	Community facilities		Volunteering opportunities/ support for voluntary & community	Activities for young people	Community cohesion	Libraries	Communications and Information
			No perceived problem / not applicable	Should remain with the individual Parish		No perceived problem / not applicable	Provision of children's playground in Saunderton.	No perceived problem / not applicable	Better mobile facilities in Saunderton. The library currently stops at the Hostel and Trout Hollow. The latter is hardly a centre of built-up housing, is close anyway to Princes Risborough. A stop at Saunderton should be considered.	Should remain with the individual Parish
			There is a concern regarding the number of empty shops in Princes Risborough which is the nearest shopping facility to Longwick	Below par		Self supporting	Provision of teen play/leisure facilities in Bledlow Ridge (BRAC)	Good	No perceived problem / not applicable	Fair
			Poor			Very caring community - people look after each other e.g. Good Neighbour scheme	There is a lack of coordination for access to youth facilities for children in outlying villages, so rural communities miss out on provision. Youth Officer need to come out to Parish Councils to let them know what is available.		Average	Lack of communication between authorities
			Shop rents are high as a result many High St shops are 'one-man bands' as the owner/manager cant afford to employ many staff				Poor		Library and Tourist info centre work closely together - partnership working	Need to develop proposals for a Community Hub
			Too many charity shops in the High Street				Better communication needed re progress by youth service working in Great Kingshill		Library is a friendly and safe place and is accessible to all community groups	
							Lack of youth facilities in Hughenden Parish			
							Limited youth services county wide especially in rural areas			
							Need to seek support from Youth & Community Team to develop a youth strategy			
<b>Accessibility Planning</b>										
<b>Local transport plan 2</b>										
<b>NAG</b>										

	Cohesive Communities									
	Sports and Leisure activities	Cultural facilities	Shopping facilities	Community facilities		Volunteering opportunities/ support for voluntary & community	Activities for young people	Community cohesion	Libraries	Communications and Information
<b>Service Excellence</b>						Very caring community - people look after each other e.g. Good Neighbour scheme	Better communication needed re progress by youth service working in Great Kingshill		Library and Tourist info centre work closely together - partnership working	
							Lack of youth facilities in Hughenden Parish		Library is a friendly and safe place and is accessible to all community groups	
							Limited youth services county wide especially in rural areas			
<b>Market Town Healthcheck</b>		Need to establish a shared tourism strategy	Shop rents are high as a result many High St shops are 'one-man bands' as the owner/ manager can't afford to employ many staff				Need to seek support from Youth & Community Team to develop a youth strategy			Lack of communication between authorities
			Too many charity shops in the High Street							Need to develop proposals for a Community Hub

	Thriving Economies							
	Support for local businesses	Local job prospects	Education provision		Learning programmes for adults	Affordable decent housing	Trading standards	Cross Border Liaison with Oxfordshire
<b>Hughenden</b>	Should remain with the individual Parish	No perceived problem / not applicable	No perceived problem / not applicable		No perceived problem / not applicable	Should remain with the individual Parish	No perceived problem / not applicable	No perceived problem / not applicable
<b>Longwick cum Ilmer</b>								
<b>Princes Risborough</b>	Poor	Poor	Poor		-	Absent	-	Unknown at Parish level
	Should remain with the individual Parish	West Yard concerns if sold/ redeveloped could result in loss of jobs.	No perceived problem / not applicable		No perceived problem / not applicable	Possible future increase needed (existing facility of 5 dwellings in Bledlow)	No perceived problem / not applicable	Possibility of A41 new Reading Thames crossing link could affect Bledlow.
	Poor	No perceived problem / not applicable	Poor			Should remain with the individual Parish	Community Alerts - Trading Standards provide email info to community groups of scams happening in their area.	No perceived problem / not applicable
	Princes Risborough High Street is rapidly dying - high business rates, lack of free parking. Wendover & Thame near and both have free parking for shoppers	Poor				Absent	Trading Standards have an excellent working relationship with Neighbourhood Watch in Princes Risborough	Unknown at Parish level
	Town does not have an active Chamber of Trade and Commerce and local businesses do not have a proactive. Representative body.	Local jobs for local people needs to be addressed. A survey of 32 supermarket employees showed only 4 were from Risborough.				Lack of low cost housing - people growing up in the area cant afford to live there afterwards		
						Pack of houses for younger generation throughout the area is needed.		
					-	Little opportunity for local people to be housed locally. Housing is not allocated by the Parish but by the District Council from their district wide waiting list. This reduces the opportunity for local people to be housed in social housing and as a consequence there is a fragmentation of the local community	-	
						Need to conduct a community-wide affordable housing audit involving all stakeholders		

	Thriving Economies							
	Support for local businesses	Local job prospects	Education provision		Learning programmes for adults	Affordable decent housing	Trading standards	Cross Border Liaison with Oxfordshire
<b>Accessibility Planning</b>								
<b>Local transport plan 2</b>								
<b>NAG</b>								
<b>Service Excellence</b>	Princes Risborough High Street is rapidly dying - high business rates, lack of free parking. Wendover & Thame near and both have free parking for shoppers					Lack of low cost housing - people growing up in the area cant afford to live there afterwards	Community Alerts - Trading Standards provide email info to community groups of scams happening in their area.	
						Pack of houses for younger generation throughout the area is needed.	Trading Standards have an excellent working relationship with Neighbourhood Watch in Princes Risborough	
<b>Market Town Healthcheck</b>	Town does not have an active Chamber of Trade and Commerce and local businesses do not have a proactive. Representative body.	Local jobs for local people needs to be addressed. A survey of 32 supermarket employees showed only 4 were from Risborough.				Little opportunity for local people to be housed locally. Housing is not allocated by the Parish but by the District Council from their district wide waiting list. This reduces the opportunity for local people to be housed in social housing and as a consequence there is a fragmentation of the local community		
						Need to conduct a community-wide affordable housing audit involving all stakeholders		

	Safe Communities		
	Levels of crime	Levels of anti-social behaviour	Street & environmental cleanliness
<b>Bledlow cum Saunderton</b>	Cars on Haw Lane verge. Apparent TVP disinterest		Urgent repair / damage limitation work required on Bledlow Children's Home.
<b>Bradenham</b>			
<b>Ellesborough</b>			
<b>Hughenden</b>	Should remain through NAG's, which should be made co-terminus and report through the LCP.	This is a NAG issue	Should remain with the individual Parish
<b>Longwick cum Imler</b>	The lack of available police officers especially after the afternoon shift is of concern		
<b>Princes Risborough</b>	Lack of feedback on statistics from Police	High and unacceptable	Below average
	Levels unsatisfactory	Lack of visible police presence	
	Lack of visible police presence		
<b>Police</b> (1) Cars on Haw Lane verge - apparent TVP disinterest (2) The lack of available police officers especially after the afternoon shift is of concern (3) Lack of feedback on statistics from Police (4) Lack of visible police presence	This is a NAG issue	Urgent repair / damage limitation work required on Bledlow Children's Home.	
Should remain through NAG's, which should be made co-terminus and report through the LCP.	High and unacceptable	Should remain with the individual Parish	
Vandalism (1) There has been a mixture of different forms of vandalism often linked to young people and anti-social behaviour. This includes graffiti, breaking of windows and damaging cars.	Anti-social Behaviour - The three key problem areas are; alcohol consumption both by underage individuals and adults leading to nuisance behaviour; vehicle nuisance involving displaying and noise; nuisance caused by intimidation of residents through games such as 'knock down ginger'	Below average	

	Safe Communities		
	Levels of crime	Levels of anti-social behaviour	Street & environmental cleanliness
(2) Vandalism of railway property (Chinnor & PR Railway) is a problem in Chinnor and may be expected to be so when they start to operate from PR station			
Levels unsatisfactory	Lack of visible police presence		
Fear of crime, perception of crime	Poor support from Police with ASB problems in Great Kingshill		
Doorstep selling zones help to stop vulnerable people being victims of bogus callers etc	Rural areas are on low priority list for services re. youth or ASB		
<b>Accessibility Planning</b>			
<b>Local transport plan 2</b>			
<b>NAG</b>	Vandalism - there has been a mixture of different forms of vandalism often linked to young people and anti-social behaviour. This includes graffiti, breaking of windows and damaging cars.	Anti-social Behaviour - The three key problem areas are; alcohol consumption both by underage individuals and adults leading to nuisance behaviour; vehicle nuisance involving displaying and noise; nuisance caused by intimidation of residents through games such as 'knock down ginger'	
<b>Service Excellence</b>	Fear of crime, perception of crime	Poor support from Police with ASB problems in Great Kingshill	
	Vandalism of railway property (Chinnor & PR Railway) is a problem in Chinnor and may be expected to be so when they start to operate from PR station	Rural areas are on low priority list for services re. youth or ASB	
	Doorstep selling zones help to stop vulnerable people being victims of bogus callers etc		
<b>Market Town Healthcheck</b>			