

Wendover

Local Area Forum



• Local Area Plan •



April 2012

Contents

| | |
|--|----|
| The purpose of the Area Plan..... | 2 |
| Local Community Areas map..... | 3 |
| Map of the Wendover local area..... | 4 |
| The Wendover Local Area Forum and work undertaken on its priorities..... | 5 |
| The Wendover Local Area Forum membership | 7 |
| Local Area Forum representatives..... | 9 |
| Local area profile..... | 11 |
| The Wendover area priorities..... | 13 |

The purpose of the Area Plan

The purpose of the Wendover Area Plan is to set out a clear list of local priorities that need to be addressed in order to improve the social, economic and environmental conditions within the Wendover local area over the next two-three years.

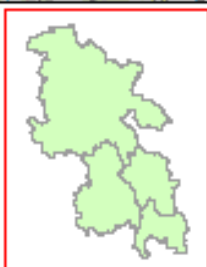
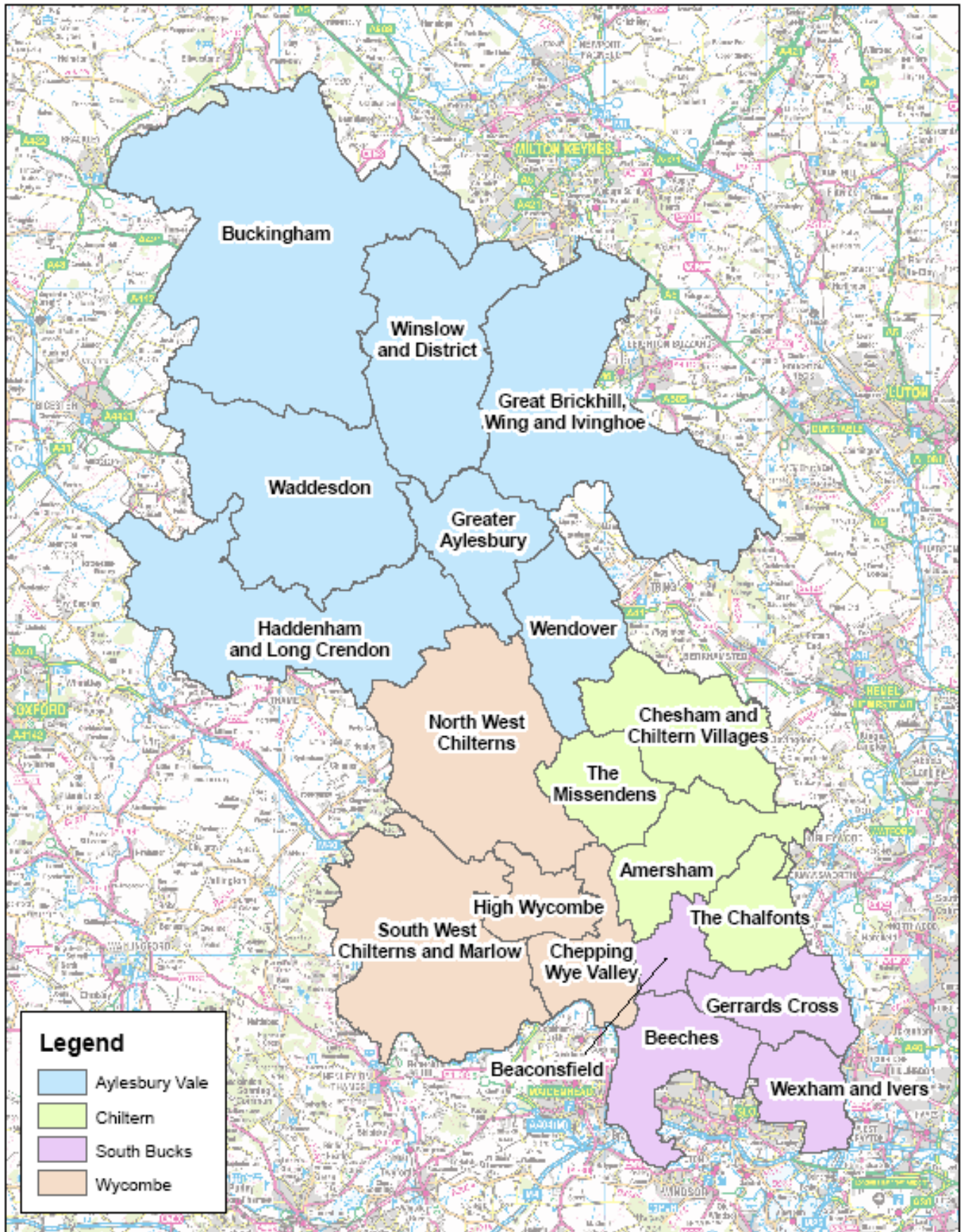
In some instances, the Wendover Local Area Forum will be able to directly impact on actions to address one or more of the priority themes through allocation of its delegated budgets. For most of the priorities within the area plan, it is likely that the main role of the Local Area Forum (LAF) will be to act as a coordinating body and catalyst for action, with the LAF taking an investigative, supportive, developmental, championing and monitoring role.

The area plan should be regarded as an initial set of commitments, which can be added to in the



RAF Halton

light of emerging opportunities, rather than a fixed agenda that must be adhered to rigidly over the next three years. The LAF will work closely with partner organisations to seek progress on the priority themes within the area plan.



**Buckinghamshire Local Community Areas
2011**

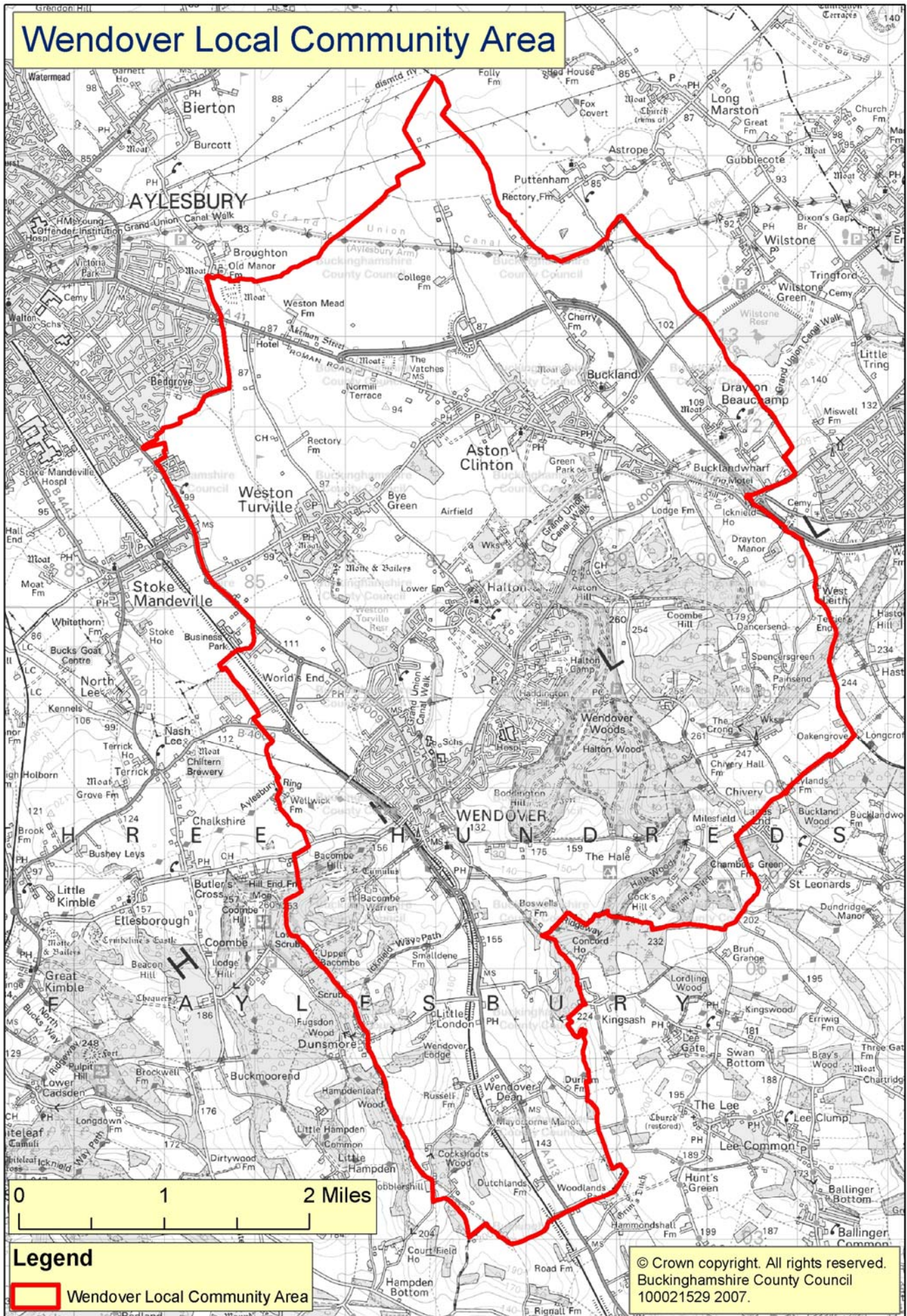
This map is reproduced from Ordnance Survey material with the permission of Ordnance Survey on behalf of the controller of Her Majesty's Stationery Office. Crown Copyright. Unauthorised reproduction is illegal. Copyright and any other rights reserved or not proceedings. © Copyright Buckinghamshire County Council Licence No. 100021024 2011 Images © GeoPerspective.com

Produced by the Research Team
November 2011


Scale: 1:300,000 at A4



Wendover Local Community Area



Legend

 Wendover Local Community Area

© Crown copyright. All rights reserved.
Buckinghamshire County Council
100021529 2007.

The Wendover Local Area Forum and work undertaken on its priorities

The Wendover local area is covered by seven parishes (see page 8), which form the Local Area Forum.

Local Area Forums are meetings where local county, district and parish councillors, along with representatives of the police, fire and rescue and other public or voluntary/community sector partners, meet to discuss local residents' needs and priorities.

One of the first tasks for each Local Area Forum was to determine priorities for the local area plan. To this end, the Wendover LAF held a local area planning workshop in 2009. Five top priorities were chosen to be taken forward for action. These included Facilities, activities and groups for young people aged 11+, Support for older people, Sustainable transport including community transport, the Wendover Neighbourhood Action group/LAF consensus priorities (speeding, illegal motorcycle activity, vandalism and graffiti) and Lack of parking for residents and shoppers.

Some of these have continued to be priorities in a priorities refresh undertaken in October 2011 but others such as Parking are not.

Community speedwatch was purchased through the Local Area Forum to be used by the parishes within the Wendover Police neighbourhood (which links with the LAF boundaries)



A participatory budgeting pilot project was undertaken in Wendover during late 2011. A number of projects were funded that met the local priorities including community transport, activities for young people and older people.

Lack of parking for residents and shoppers

Lack of parking for residents and shoppers was a priority with a particular emphasis on the needs of Wendover, although there were sporadic issues throughout other parishes in the area. The issue for Wendover was reduced by a residents' parking scheme which was undertaken in 2011 and one-third funded by the LAF (BCC and AVDC provided the other funding).

Support for Wendover Neighbourhood Action group/LAF consensus priorities

Although this priority is not being taken forward as a whole following the LAF priorities refresh, part of the priority—speeding and rat-running through villages—is now a top priority in its own right.

Illegal motorcycle activity has been reviewed in specific locations by the Neighbourhood Police Team and BCC's Rights of Way teams. A number of speeding issues.

The LAF has also purchased a community speedwatch device for use by parishes within

the Police neighbourhood and a number of vehicle-activated signs have been purchased through the LAF.

More provision for young people

The LAF part-funded the sports cage, which is used within the parishes, as part of a package of activities funded by the LAF or can be hired by parishes/youth organisations at a reasonable rate.

The LAF-funded activities have included Aylesbury Vale Youth for Christ (AVYFC) running holiday and evening activities in the parishes for young people—and also activities run through AVDC including the skateboard park.

The LAF has also contributed towards the setting up the Weston Turville Youth Café and funding of this and Aston Clinton Youth Club/ Café, Wendover Youth Club and the Amazing Donkeys' activities.

The LAF has agreed to keep Activities and facilities for young people aged 11+ as a priority for action.

Sustainable transport including community transport

The LAF has funded the Wendover Community Car scheme and also transport to activities for young people and older people in the participatory budgeting project.

Now the revised priorities have been set (see page 13 for more information), this priority has been revised to become 'Better transport facilities required' and there is a separate priority involving transport for older people/vulnerable groups.

Currently work is taking place with Halton and Weston Turville parish councils to discuss route changes with Arriva and BCC to better serve the needs of the local area.



The LAF part-funded the popular sports cage, funded the development of the Weston Turville Youth Café and funded a number of young people's activities in the area

Support for older people

Through the participatory budgeting project the LAF supported a number of activities for older people, but this is an area that requires work in future years. To this effect, the priority has been modified to become 'Concern about elderly people/vulnerable groups unable to meet people or access transport'.

The LAF will also consider agenda items and information linked to the priorities, alongside other items of interest or relevance to the local area—including the strategic priorities, not requiring action by the LAF.

LAF meetings are open to residents and local community groups and held throughout the area, with previous meetings in Wendover, Weston Turville and Aston Clinton, with the workshops held in Halton.

The Forum times and dates can be located at www.buckscc.gov.uk. Click on 'Committees' and then 'Wendover Local Area Forum'.

For more information on the Wendover Local Area Forum, also 'like' the Wendover local area page on Facebook.

The Wendover Local Area Forum membership

The Wendover local community area covers two divisions of the County Council. The Chairman for Wendover Local Area Forum is Bill Chapple OBE.

| County Councillors in the Wendover local area | | |
|---|------------------|--|
| Aston Clinton | Bill Chapple OBE | Tel: 01296 426814 Mob: 07860 187432 Email: bchapple@buckscc.gov.uk |
| Wendover and Halton | Marion Clayton | Tel: 01296 622862 Email: mclayton@buckscc.gov.uk |

The local area falls within the Aylesbury Vale District. The Vice-Chairman for Wendover Local Area Forum is District Councillor Carole Paternoster:

| District Councillors in the Wendover local area | | |
|---|--------------------|--|
| Aston Clinton | Carole Paternoster | Tel: 01296 630710 Tel: 01296 585717 Email: cpaternoster@aylesburyvaledc.gov.uk |
| Aston Clinton | David Thompson | Tel: 01296 663737 Tel: 07736 105959 Email: dthompson@aylesburyvaledc.gov.uk |
| Aston Clinton | Phil Yerby | Mob: 07769 621507 pyerby@buckscc.gov.uk |
| Wendover | Steve Bowles | Mob: 07766 951010 Email: sbowles@aylesburyvaledc.gov.uk |
| Wendover | Chris Richards | Tel: 01296 624232 Email: crichards@aylesburyvaledc.gov.uk |
| Wendover | Peter Strachan | Tel: 01296 586441 Mob: 07747 634397 Email: pstrachan@aylesburyvaledc.gov.uk |

The Wendover LAF also comprises the following parishes which, in addition to the County and District Councillors, are also voting mem-

bers. The LAF currently uses the proportional representation voting system (this may be reviewed shortly)

| Parish council | Parish chairman | Parish clerk |
|----------------------------------|--------------------|------------------|
| Aston Clinton | Don Evett | Claire Hill |
| Buckland | Carole Paternoster | Christine Jensen |
| Drayton Beauchamp Parish Meeting | | Mrs M Nodes |
| Halton | Michael Blundell | Christine Jensen |
| Stoke Mandeville* | Jenny Hunt | Sarah Copley |
| Wendover | Steve Worth | Fiona Lippman |
| Weston Turville | Michael Foote | John Dean |

Stoke Mandeville Parish Council attends the Wendover Local Area Forum and participates fully in all discussions/actions—however, it does not have voting rights, nor can it apply for funding through the LAF's devolved budgets.

Stoke Mandeville PC has voting rights at the Greater Aylesbury LAF and can access its devolved budgets.

The LAF welcomes memberships from other partners/local groups and resident attendance. The following organisations are members of the Local Area Forum:

- Bucks Fire and Rescue
- Bucks PCT
- CHASE
- RAF Halton
- Thames Valley Police

Local Area Forum representatives

There are a number of representatives from the County and District Council at the Wendover Local Area Forum. These are:

| Representative | Name | Contact |
|---|----------------------------|---|
| <p>Chairman The LAF Chairman is a County Councillor</p> | Bill Chapple OBE | <p>Tel: 01296 426814 Tel: 01296 382095 Mob: 07860 187432 Email: bchapple@buckscc.gov.uk</p> |
| <p>Vice-Chairman The Vice-Chairman is a District or Parish Councillor as agreed by the Local Area Forum</p> | Carole Paternoster | <p>Tel: 01296 630710 Tel: 01296 585717 Email: cpaternoster@aylesburyvaledc.gov.uk</p> |
| <p>Lead Area Officer (County) The Lead Area Officer is a County Council senior manager who works with the Locality Manager to provide senior management support to the LAF.</p> | Anne James | <p>Tel: 01296 387125 Email: ajames@buckscc.gov.uk</p> |
| <p>Lead Area Officer (District) The Lead Area Officer from Aylesbury Vale District Council (AVDC) is also a senior manager who works with the Locality Manager to provide senior management support and commitment from AVDC to the LAF.</p> | John Byrne (or Alan Evans) | <p>Tel: 01296 585678 Email: jbyrne@aylesburyvaledc.gov.uk</p> |
| <p>Locality Manager The Locality Manager progresses both the Local Area Plan and issues raised. The Locality Manager also works with local parishes and a wide range of partners on projects to benefit local communities.</p> | Jackie Wesley | <p>Tel: 01296 383839 Email: jwesley@buckscc.gov.uk</p> |
| <p>Thames Valley Police representative The representative from Thames Valley Police is the Neighbourhood Inspector for the area, who works with the Locality Manager to provide commitment and support from the Police.</p> | Emma Garside | <p>Tel: 101 Email: emma.garside@thamesvalley.pnn.police.uk</p> |
| <p>Democratic Services Officer The Democratic Services Officer is responsible for the meeting administration and note taking and organises the LAF meetings/agendas.</p> | Karen Jones | <p>Tel: 01296 383627 Email: kljones@buckscc.gov.uk</p> |

Service area representatives

The following County Council service areas have local representatives working in your local community area, who will be in regular attendance at the LAF drop-in sessions:

| Service | Contact | Contact |
|--------------------------|--|--|
| Adult Social Care | Karen Adamson | Tel: 01296 383847 Email: kadamson@buckscc.gov.uk |
| Transportation | <p>Transport for Buckinghamshire Main number for reporting highways issues, etc.:</p> <p>Local area technician: Clifford Marshall</p> <p>Transport localities team leader : Ann-Marie Davies</p> | <p>Tel: 0845 230 2882</p> <p>Tel: 01296 382317 email: cmarshall@buckscc.gov.uk</p> <p>Tel: 01296 383426 Email: amdavies@buckscc.gov.uk</p> |

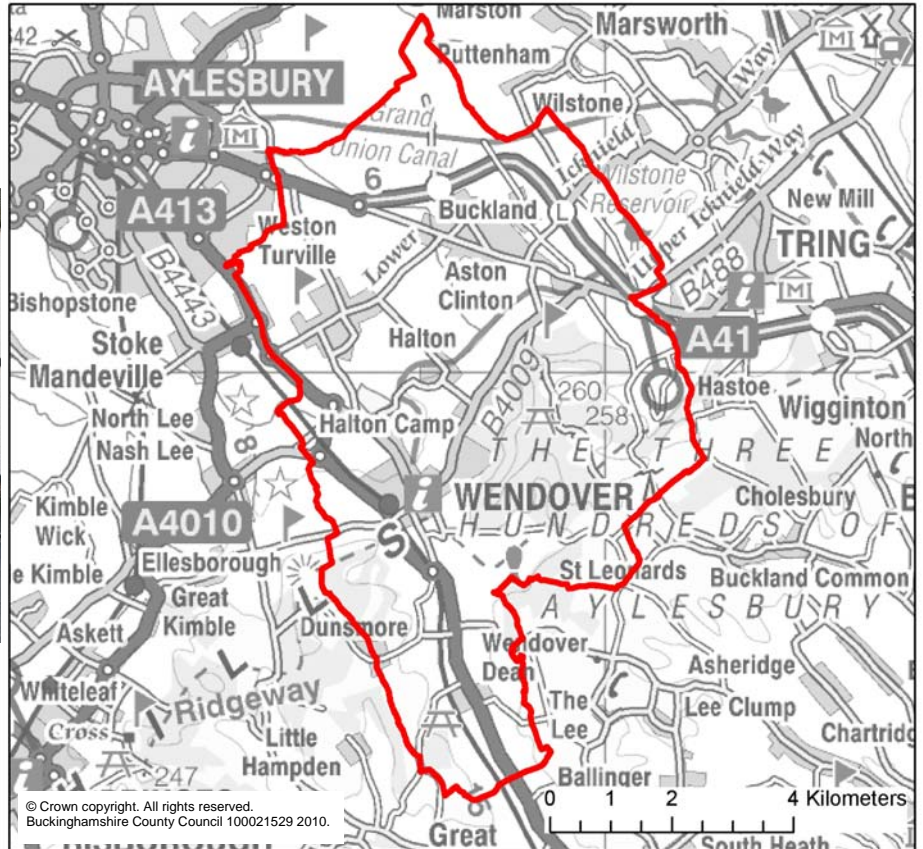
The Wendover Neighbourhood Police team includes Sgt Bryn Scott, PCs Paul O'Connell, Jo Smith and Andrew Smith and PCSOs Christina Pringle, Mandy Aplin and Paul Evans.

For more information telephone 101.

Local Area Profile



Wendover



General characteristics

| | | |
|-------------------|--------|--------|
| Total population: | 2001 | 2007 |
| % Bucks: | 17,655 | 18,248 |
| | 3.7% | 3.7% |

Age structure

| | Area % 2007 | Bucks Index | %Change from 2001 |
|--------------|-------------|-------------|-------------------|
| 0 to 4 yrs | 5% | 87 | -1% |
| 5 to 10 yrs | 8% | 98 | 6% |
| 11 to 19 yrs | 12% | 104 | -2% |
| 20 to 39 yrs | 22% | 92 | -7% |
| 40 to 59 yrs | 30% | 103 | 6% |
| 60 to 74 yrs | 15% | 104 | 16% |
| 75+ yrs | 8% | 116 | 14% |

Household composition

| | Area % 2001 | Bucks Index |
|---------------------------------------|-------------|-------------|
| Single occupant adults | 10% | 81 |
| Couples [^] | 21% | 106 |
| Couples with children ^{**} | 28% | 102 |
| Lone parents ^{**} | 3% | 74 |
| Households with nondependent children | 9% | 92 |
| Pensioners | 25% | 114 |
| Other (e.g. students) | 3% | 82 |

[^] No children, or children have left home.

^{**} Household has a dependent child. Includes 'other' households with children that are not lone parent households.

ACORN Groups[#]

| | Area % 2010 | Bucks Index | %Change from 2006 |
|-------------------------|-------------|-------------|-------------------|
| Wealthy Professionals | 10% | 92 | 17% |
| Village Wealthy Commute | 11% | 150 | -6% |
| Well-off Managers | 10% | 148 | -1% |
| Affluent Greys | 7% | 134 | 77% |
| Flourishing Families | 19% | 135 | -13% |
| Urban Professionals | 10% | 74 | 116% |
| Secure Families | 15% | 91 | -5% |
| Settled Suburbia | 4% | 64 | -50% |
| Moderate Means | 3% | 37 | 30% |
| Hard Pressed | 9% | 89 | 121% |

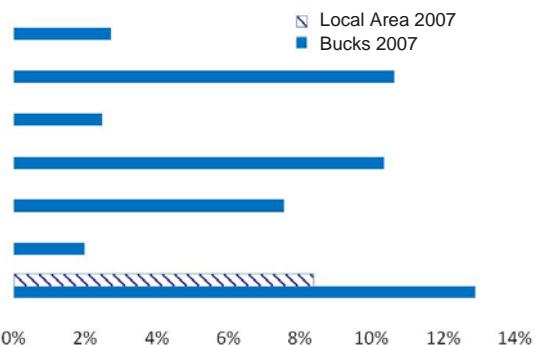
[#] based on households

% Change: Shows the % increase/decrease of the number of people in each demographic group.

General characteristics

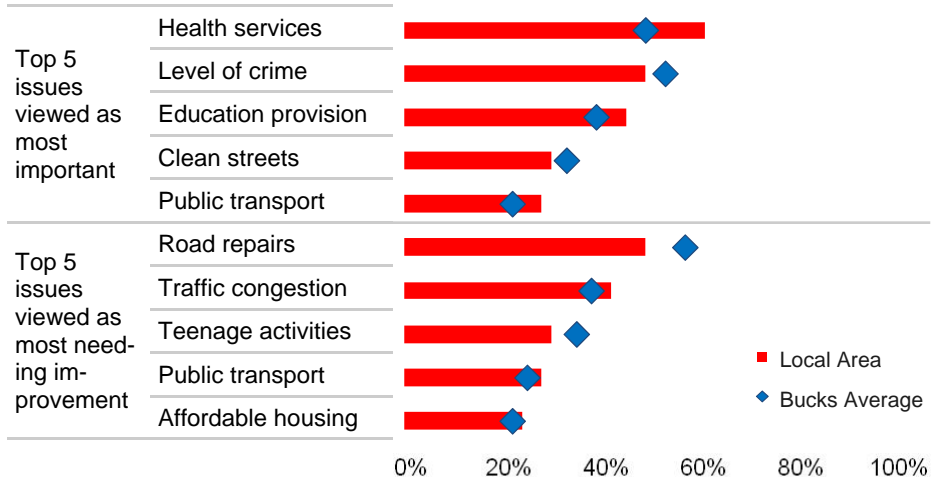
| Deprivation | Area % of the Population | Area % 2004 | Area % 2007 |
|-----------------------|--------------------------|-------------|-------------|
| Overall Deprivation | 0% | 0% | 0% |
| Income | 0% | 0% | 0% |
| Employment | 0% | 0% | 0% |
| Children's education | 0% | 0% | 0% |
| Adult qualifications | 0% | 0% | 0% |
| Health and disability | 0% | 0% | 0% |
| Crime | 0% | 0% | 8% |

Population in the 30% most deprived areas



Resident priorities in the local area (2010)

The graph below shows what residents feel is most important and what is felt to be in most need of improvement in their local area (based on 148 people).



Index: An index of 100 shows an equal proportion of people in the area when compared to the county average. An index of 50 shows that there are half the proportion, and an index of 200 shows twice the proportion.

Local Area diversity

| | Area % 2001 | Bucks Index |
|-------------------------|-------------|-------------|
| Ethnicity | | |
| White | 97.9% | 106 |
| Mixed | 0.6% | 49 |
| Asian | 0.8% | 16 |
| Black | 0.2% | 16 |
| Chinese/other | 0.5% | 69 |
| Black / Minority Ethnic | 2.1% | 26 |

Ethnicity of Pupils

| | Area % 2010 | Bucks Index |
|-------------------------|-------------|-------------|
| Black / Minority Ethnic | 4.8% | 24 |

Pupils first language

| | Area % 2010 | Bucks Index | %Change from 2009 |
|--------------------|-------------|-------------|-------------------|
| English | 96.8% | 111 | 2.4% |
| Punjabi (any type) | <0.3% | N/A | N/A |
| Urdu | 0.2% | 8 | -16.7% |
| Pashto/Pakhto | 0.0% | 0 | N/A |
| Polish | 0.0% | 0 | N/A |
| Tamil | 0.2% | 70 | 0.0% |
| Chinese (any type) | 0.6% | 223 | 0.0% |
| Gujarati | <0.3% | N/A | N/A |
| Bengali (any type) | <0.3% | N/A | N/A |
| Arabic (any type) | 0.0% | 0 | N/A |
| French | <0.3% | N/A | N/A |
| Other languages | 1.6% | 45 | 27.6% |

| | 2009 | 2010 |
|-------------------------------|-------|-------|
| Number pupils (Bucks schools) | 2,200 | 2,253 |

Local Area safety

| | Area 2009 | Area 2010 |
|----------------------------|-----------|-----------|
| Burglary (domestic) | 48 | 34 |
| Theft from vehicle | 85 | 61 |
| Deliberate fires | 11 | 6 |
| Accidental fires—dwellings | 10 | 7 |

Perceptions of local area

| | Area % 2008 | Bucks Index |
|----------------------|-------------|-------------|
| Feel safe in day | 93% | 101 |
| Feel safe after dark | 65% | 113 |

| | Area % 2010 | Bucks Index |
|--|-------------|-------------|
| People from different backgrounds get on well | 82% | 96 |
| Respect / consideration of other people is a problem | 15% | 81 |
| Parents take enough responsibility for children | 61% | 125 |
| Satisfaction with local area as a place to live | 92% | 108 |
| Providing unpaid help | 51% | 96 |

Travel and environment

| | Area 2008 | Area 2009 | Area 2010 |
|-----------------------------|-----------|-----------|-----------|
| Killed or Seriously injured | 6 | 6 | 6 |
| Slightly injured | 33 | 30 | 30 |

Pothole repairs*

*geographic area approximate fit to local areas

For more information contact:

- 01296 38 3373
- research@buckscc.gov.uk
- www.buckscc.gov.uk/research

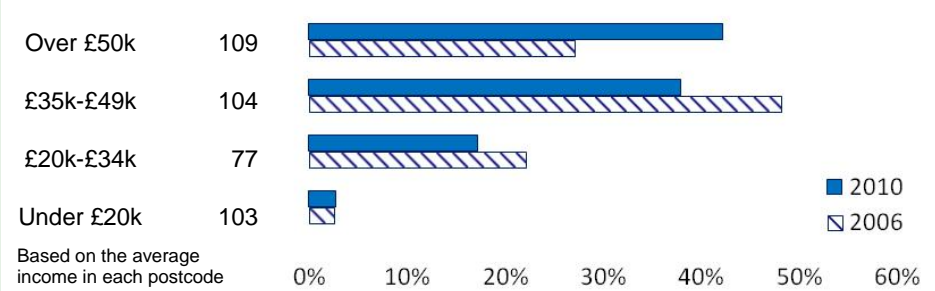
Published February 2011, ACORN supplied by CACI

Economic situation

Benefit claimants

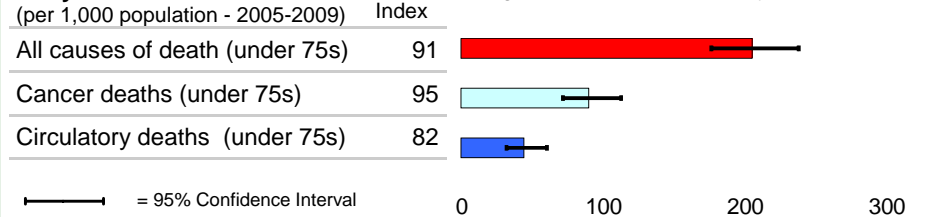
| | Bucks Index | % change from 2008 | Benefit claimants in 2009 (%) |
|--|-------------|--------------------|-------------------------------|
| Job seekers allowance (unemployed looking for work) | 47 | 133% | |
| Lone parent claiming (income support, child <16) | 37 | 13.8% | |
| Disability living allowance (contribute to cost of disability) | 71 | 1.9% | |
| Pension credits (minimum income for those 60+) | 76 | -3.7% | |

Income



Health, well-being and lifestyles

Early Death Rates

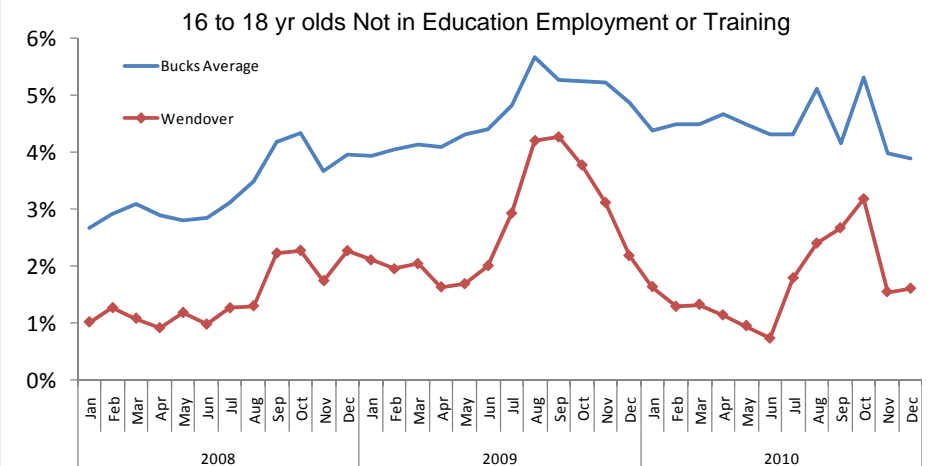


| | NHS Bucks Index | Area 2005-2009 | Confidence Interval (95%) | |
|-----------------------------------|-----------------|----------------|---------------------------|-------|
| | | | Upper | Lower |
| Age standardised per 1,000 people | | | | |
| All Emergency Admissions (EA) | 102 | 6399 | 6805 | 6014 |
| Circulatory Diseases EA | 110 | 520 | 628 | 429 |
| Respiratory Diseases EA | 112 | 781 | 930 | 652 |
| First Outpatient Attendances | 106 | 353 | 363 | 344 |

| | Difference from NHS Bucks | Area 2005-2009 | Upper 95% CI | Lower 95% CI |
|----------------------------|---------------------------|----------------|--------------|--------------|
| Life expectancy (at birth) | -0.7 yrs | 80 yrs | 79.2 yrs | 80.7 yrs |

Education and young people

| | 2009 | 2010 | Bucks Index (2010) |
|---|------|------|--------------------|
| 5+ A*-C grade GCSE's | 62% | 68% | 105 |
| Special Education Needs | 2.5% | 3.2% | 98 |
| Pupils claiming & receiving Free School Meals | 2.4% | 2.8% | 48 |



The Wendover area priorities

The priorities for the area were identified at a workshop held in October 2011. Prior to the workshop, residents and local organisations were surveyed on their issues and concerns and this information was given to workshop attendees (and is also available in a separate document).

The following priorities were identified at the workshop. These top actionable priorities will be worked on by the LAF and also updated on a regular basis as these are taken forward. LAF budgets will be allocated to the actionable priorities.

Sustainable Community Strategy

The priorities are linked to the five broad themes of the Sustainable Community Strategy (SCS). The links to each theme are shown by the following colour coding:

- Sustainable environment
- Health and wellbeing
- Cohesive communities
- Thriving economies
- Safe communities

Top actionable priorities: to be worked on locally by the LAF and community groups

- **Activities and facilities for young people aged 11+**
(also incorporates: activities and facilities underused due to lack of volunteers)
- **Anti-social behaviour**
- **Speeding and rat-running through the villages**
- **Better transport facilities required**
- **Concern about elderly people / vulnerable groups unable to meet people or access transport**

Strategic priorities: the LAF will monitor and lobby on behalf of these priorities

- HS2
- Safer Routes to school
- More support for business
- Sustainable transport options, including cycle routes and cycle parking
- Road improvements required
- Faster broadband for rural areas

Not to be taken forward by the LAF for funding or targeted work (review as required)

- Parking issues
- Community cohesions—tensions between different groups in the community
- More open spaces required and enhance existing spaces.

Priority: Activities and facilities for young people aged 11+

| | |
|--|---|
| Current situation | <p>Youth clubs in Wendover (Wendover Youth Club and Amazing Donkeys), Aston Clinton (Youth Café and church-based Youth Club and additional Youth Club by the recreation ground) and Weston Turville (Youth Café and Fringe church group).</p> <p>In terms of facilities, Weston Turville young people have indicated a need for a skateboard park.</p> |
| Work being considered/taken forward | <p>The Wendover Local Area Forum has funded youth support workers to assist in Wendover and Weston Turville and commissioned a range of activities in the parishes.</p> <p>Following the priorities refresh workshop, that was attended by local young people, the LAF has also commissioned and funded work to develop a youth council/forum to provide a link between the local area parishes and encourage youth engagement and empowerment.</p> |
| Partner agencies and/or subgroup members | <p>Work being undertaken with Aylesbury Vale Youth for Christ (AVYFC). Links with AVDC and Action4Youth.</p> |

Priority: Anti-social behaviour

| | |
|--|---|
| Current situation | <p>Anti-social behaviour is a priority for both the Local Area Forum and for the Wendover Police Neighbourhood team, which notes that the main issues involve young people congregating in locations within Aston Clinton and Wendover making noise, leaving litter and on occasions causing low-level criminal damage.</p> |
| Work being taken forward | <p>Diversions activities currently being undertaken through the Local Area Forum and other agencies.</p> <p>The Police is working with its partners to patrol the area and deal with those involved in anti-social behaviour.</p> |
| Partner agencies and/or subgroup members | <p>Thames Valley Police leading on this. The LAF will continue to work on diversions activities, etc.</p> |

Priority: Speeding and rat-running through villages

| | |
|--|---|
| Current situation | Road safety issues is a priority for the Wendover Neighbourhood Police team and includes speeding in specific locations throughout the Wendover local area. |
| Work being taken forward | The community speedwatch was funded by the Local Area Forum to be used by the parishes in the local area/Neighbourhood Police team area. A number of vehicle-activated signs have also been purchased by the LAF and parishes. Other work for consideration by the LAF could include a concerted campaign to target areas of concern—with the LAF working with the Police on a range of measures including speedwatch, signs, posters and work with schools, etc. |
| Partner agencies and/or subgroup members | TVP and parishes working on community speedwatch. For other proposals there is a need to identify working group members. |

Priority: Better transport facilities required

| | |
|--|---|
| Current situation | There are a number of bus routes going through Wendover, Aston Clinton, Stoke Mandeville and, in part, Weston Turville and Halton Point. There is also a train line through Wendover and Stoke Mandeville. A need has been identified by Halton and Weston Turville parish councils for a bus to serve Weston Turville centre more frequently and for a bus to go into Halton village centre. A survey has been undertaken by Halton Parish Council of its residents which identified support for a bus route through the village. |
| Work being taken forward | A meeting has been undertaken with BCC, Arriva, Weston Turville and Halton parish councils where a proposal was put forward by the parishes for a revised bus route. An alternative proposal was submitted at the meeting and this—and the original proposal—is currently being considered by Arriva. A response is expected in June 2012. If either proposal is agreed, implementation would be expected by November 2012. |
| Partner agencies and/or subgroup members | BCC, relevant parishes, Arriva. |

Priority: Concern about elderly people / vulnerable groups unable to meet people or access transport

| | |
|---|---|
| <p>Current situation</p> | <p>There is a Wendover Community Car scheme in Wendover, which goes out to the villages. There is also a Friends group for the Wendover health centre.</p> <p>A number of youth groups in the villages—and groups for older people—struggle to fund the cost of transport to activities, in particular during the evenings.</p> |
| <p>Work being taken forward</p> | <p>The LAF has funded a number of activities—including the cost of transport—in its Wendover Decides 2011 participatory budgeting project and also contributed towards the cost of the Wendover Community Car scheme.</p> <p>More work needs to be undertaken to identify specific issues.</p> |
| <p>Partner agencies and/or subgroup members</p> | |