



Childcare Sufficiency Assessment Primary School Planning Area Profile

West Wycombe



West Wycombe Primary School Planning Area

	Buckinghamshire	Planning Area
Child Population		
0-2 year olds	18938	377
3-4 year olds	12866	302
5-7 year olds	19663	486
8-11 year olds	27451	638
12-14 year olds	20936	441
0-14 year olds	99854	2244
Predicted Demand for Childcare		
3-4 year olds only [^]	12480	293
Childcare Fees per Hour		
Maximum	£26.00	£8.50
Average	£4.66	£4.80
Minimum	£0.45	£1.67
Opening Hours		
Earliest Opening Time	05:00	07:00
Latest Closing Time	22:00	19:30
Longest Day (hours)	16.00	12.00
Shortest Day (hours)	0.33	2.92
Average Day (hours)	8.48	9.02

[^] presuming a take-up rate of 97% to allow for full take up for 4 year olds and less for 3 year olds

	Number of Providers	Registered Places (full time places)
After School Club	2	54
Breakfast Club	0	0
Childminder	20	108
Creche	0	0
Day Nursery	4	170
Holiday Club	0	0
Maintained School	7	206
Nursery Units of Independent Schools	0	0
Pre-School Playgroup	4	96
TOTAL	37	634

0

	Buckinghamshire	Planning Area
Predicted Demand for Childcare		
3-4 year olds only [^]	12480	293
Supply of Childcare Places		
3-4 year olds only [^]	13619	302
Gap between Supply and Demand		
3-4 year olds only	1139	9

[^] presuming a take-up rate of 97% to allow for full take up for 4 year olds and less for 3 year olds

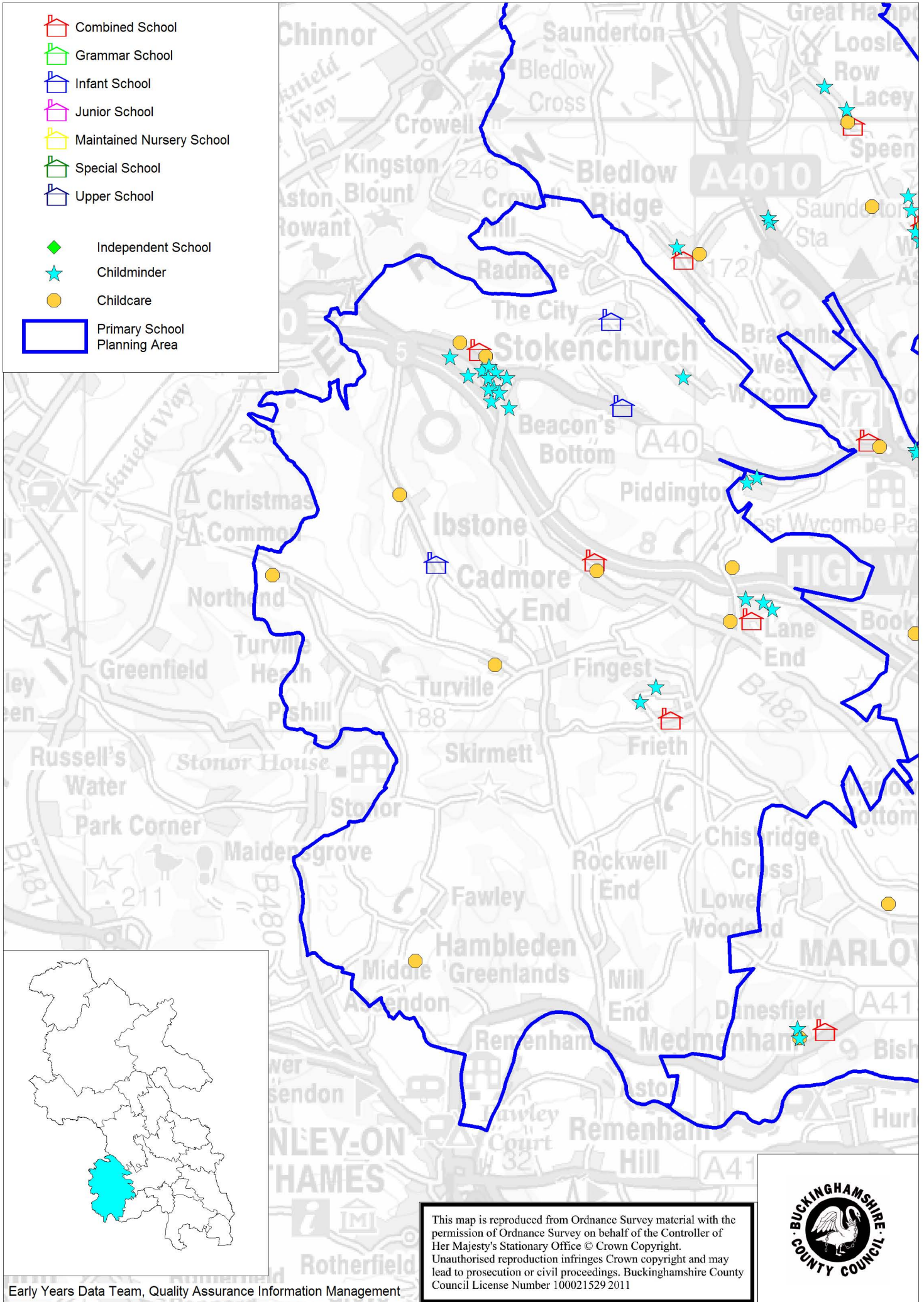
	Buckinghamshire	Planning Area
Number of Places per 100 Children		
0-14 year olds (includes 3-4 year olds)	26	28
3-4 year olds only	106	100

Information and Advice for Parents, Carers, Children and Young People

Buckinghamshire Family Information Service (BFIS) provides confidential, impartial and up-to-date information and guidance on a wide range of topics of interest to parents, prospective parents, children and young people from 0 to 20 years. This can include information on childcare, early education, play and leisure activities, parenting courses, financial support, training and careers in childcare and setting up childcare businesses. BFIS can help parents match their needs to provision available to help them access the most appropriate and affordable childcare.

For more information call 0845 688 4944 or email familyinfo@buckscc.gov.uk

West Wycombe Primary School Planning Area



Childcare providers in West Wycombe

<u>Day Nurseries</u>	<u>Postcode</u>	<u>Ofsted Judgement</u>	<u>FFE Funded</u>
Positive Steps Stokenchurch	HP14 3TG	Good	Yes
Sunshine Montessori Nursery	HP14 3NH	Good	Yes
Turville School Ltd	RG9 6QX	Satisfactory	Yes
 <u>Maintained Schools</u>			
Cadmore End CE School	HP14 3PE	Satisfactory	
Frieth CE Combined School	RG9 6PR	Satisfactory	
Ibstone CE Infant School	HP14 3XZ	Good	
Lane End Primary School	HP14 3EJ	Good	Yes
Radnage CE Infant School	HP14 3RN	Outstanding	
Stokenchurch Primary School	HP14 3XN	Outstanding	Yes
the Mary Towerton School	HP14 4DW	Good	
 <u>Out of School Clubs</u>			
Kites Club (ASC)	HP14 3XT	Satisfactory	
Positive Steps (ASC)	HP14 3RX	Satisfactory	
 <u>Pre-School Playgroups</u>			
Denning Montessori School	RG9 6JA	Outstanding	
First Steps First Pre-School	HP14 3PJ	Good	Yes
Lane End Village Pre-School	HP14 3EY	Good	Yes
Stokenchurch Pre-school Playgroup	HP14 3RX	Satisfactory	Yes

** FFE - Flexible Free Entitlement of up to 15 hours of free childcare for children aged 3 and 4 years from the term following their 3rd/4th birthdays. Please contact providers or BFIS direct for further information. School Ofsted judgements shown are for the early years provision and not the overall school judgement. Ofsted judgements are accurate at the time of data download. No Ofsted judgement is shown where we have no current data or it is not applicable **

ASC - After School Club

Childminders

Number of Childminders In Planning Area	20
Percentage who have an Outstanding Ofsted Judgement	0.0%
Percentage who have a Good Ofsted Judgement	45.0%
Percentage who have a Satisfactory Ofsted Judgement	35.0%
Percentage whose Ofsted Judgement is pending	20.0%

Please contact BFIS on 0845 688 4944 for more details of childminders in this area