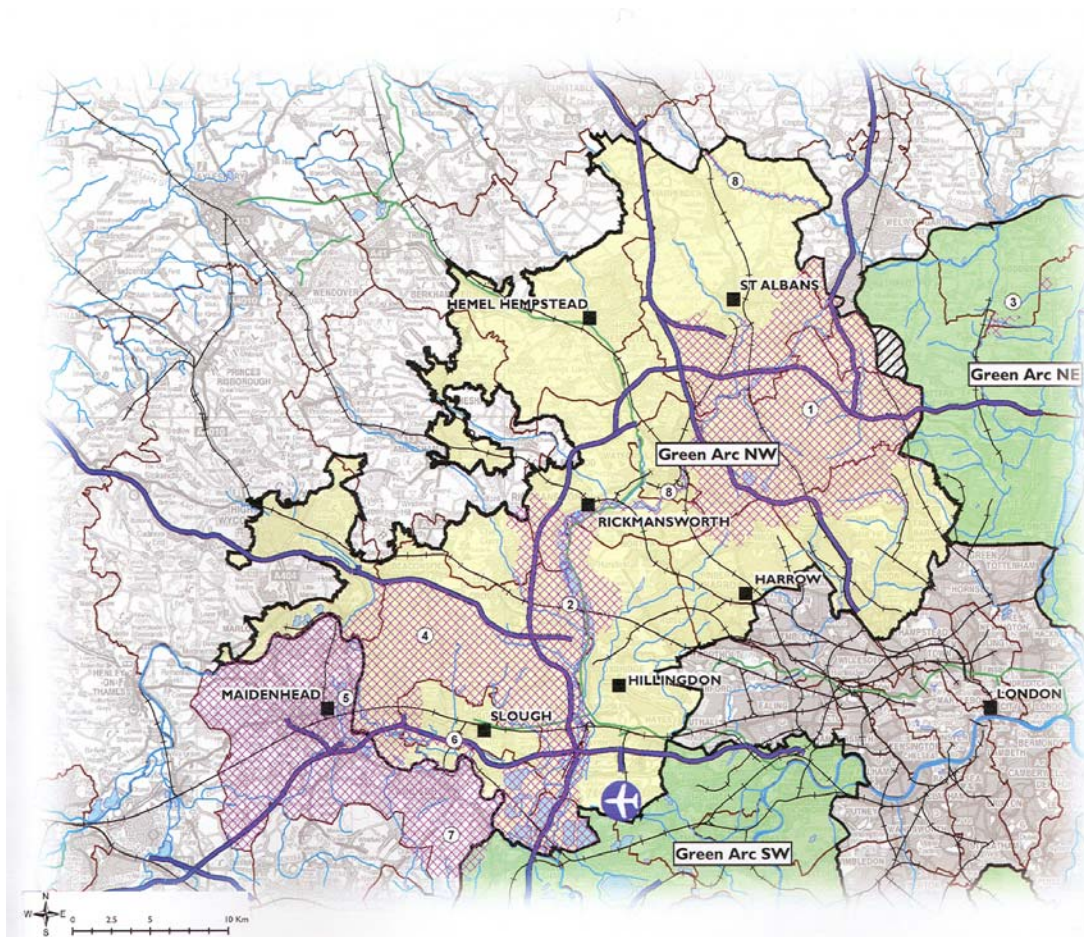


Where should efforts be focused?

- The northern boundary of the arc to co-join the North East Green Arc boundary.
- The biodiversity and recreation value of brownfield land was emphasized.
- Assess sites for their ability to be a 'quick win'.



Where should efforts be focused?

Discussions were had on the borders of the green arc, potential priority areas, and even on the types of land that should be prioritised in an action plan.

It was decided to move the top boundary of the arc to adjoin the North East Green Arc boundary. The biodiversity and recreation value of brownfield land was emphasized.

Participants felt that assessing sites for their ability to be a 'quick win' - where significant benefits can be achieved with limited financial and time investment - may help us jump start the Green Arc project with immediate successes.

Application of the Countryside In and Around Towns (CIAT) approach was recommended to help us determine further priority sites.

Green Arc of the North West of London.

Potential spatial priority areas

Key

	Original proposed Green Arc		Wating Chase Comm. Forest
	NE & SE Green Arc		Colne Valley Park
	County/Borough/Unitary Authority boundary		Broxbourne Woods NNR
	Motorway		South Bucks Heath & Commons
	Railway		Maidenhead
	Rivers & Canals		Jubilee River
	Lakes/Reservoirs		Windsor Great Park
	Heathrow Airport		Riparian corridors
	Recommendation to join with the NE London Green Arc Boundary		
	Potential spatial priority areas		